

A decorative horizontal line featuring a central rose flanked by symmetrical, flowing scrollwork on both sides.



October 2009

Thma Bang District Data Book 2009

District Code Nr: 907

Koh Kong Province

Table of Contents

List of Abbreviations	i
Glossary.....	ii
Preface	vi
Introduction	vii
SECTION A: GEOGRAPHY	1
1 Administration and Infrastructure.....	3
2 Land Use and Natural Resources.....	5
3 Geography	7
3.1 Land Area	7
3.2 Distances between Offices	7
SECTION B: DISTRICT PROFILE	9
1 General Information	11
1.1 Population of the District.....	11
1.2 Occupations	12
1.3 Property	14
2 Infrastructure and Economy.....	16
2.1 Roads in meters over 3 years.....	16
2.2 Sewerage Pipes in meters over 3 years.....	16
2.3 Drainage and Bridges	16
2.4 Services in the District	16
2.5 Agriculture.....	17
3 Social Aspects	28
3.1 Education	28
3.2 Health.....	34
3.3 Water and Sanitation	36
3.4 Vulnerable groups.....	40
3.5 Migration	42
4 Natural Resources and Environment (NRE).....	43
4.1 Families involved with NRE issues over 3 years	43
4.2 Percentage of Families involved with Natural Resource issues, by Commune, for 2008	43
4.3 Percentage Houses with access to Garbage collection and Families affected by environmental Pollution, by Commune, for 2008	43
4.4 Percentage Families using chemical Fertilizer and chemical Pesticides, by Commune, for 2008 ..	44
5 Administration and Security	44

5.1	Birth Registration across 3 years.....	44
5.2	Number of unregistered Infants born in 2008, by Commune	44
5.3	Registered criminal Cases over 3 years	44
5.4	Registered criminal Cases per 10,000 people, by Commune, for 2008.....	45
5.5	Number of registered Land Disputes, by Commune, in 2008	45
6	Gender	45
6.1	Registered Domestic Violence over 3 years.....	45
6.2	Percentage of registered cases of Families experiencing domestic Violence, by Commune, in 2008	46
6.3	Women's involvement over 3 years.....	46
6.4	Percentage of Female Participants in Civil Society and of 18-60 year women with uncertain Jobs, by Commune, in 2008	46
6.5	Female-headed Households over 3 years.....	47
6.6	Percentage female-headed Households and with Children of less than 5 years old, by Commune, in 2008	47
7	Indigenous People in the District	48
7.1	Ethnic Minorities in the District over 3 years.....	48
7.2	Other Minorities in the District over 3 years.....	48
	SECTION C: PLANS AND PROJECTS	49
8	Priorities and Plans	51
8.1	Priorities of Commune Councils for 2009 in the District by Sector	51
8.2	Temporary Agreements by Commune, for 2009	56
8.3	Outputs, estimated and actual costs of C/S Fund Projects between 2005 and 2008, by Commune	74
8.4	Total Expenditure on C/S Fund Projects by sector and commune between 2005 and 2008.....	74
8.5	Actual 2009 C/S Fund projects by Commune	75
9	District level Projects from 2006 to 2009	76
9.1	District Initiative Infrastructure Projects from 2006 to 2009	76
9.2	District Initiative Service Projects from 2006 to 2009	77
9.3	Inter Commune Council Projects in 2008 and 2009	78
9.4	Other Projects in 2008 and 2009	80
	SECTION D: SERVICES AND ORGANIZATIONS	81
10	Infrastructure.....	83
10.1	Length of and Expenditure on Roads in 2008, by District	83
10.2	Scale of and Expenditure on Irrigation in 2008, by District.....	83
10.3	Power Supply in 2008, by District	84
11	Health Facilities.....	85

11.1 Health Facilities in the Province, by Operational District.....	85
11.2 Health Facilities and Staff in the province, by Operational District.....	86
11.3 Deliveries in 2007 in the Province, by Operational District.....	86
12 Education	87
12.1 Schools, Classes, Students, Staff, for for all levels, for 2007/2008 by District.....	87
12.2 Characteristics of Schools and School Principals for 2007/2008 by Commune	87
12.3 Enrolment by Level of Education, 2006/2007 by Commune	88
12.4 Enrolment by Level of Education, 2007/2008 by Commune	88
12.5 Aspects of Enrolment for 2007/2008 by Commune.....	88
12.6 School Buildings for all schools in the District for 2007/2008, by Commune	89
12.7 Conditions of Classrooms and Existence of Separate School Office and Library, by Commune	89
12.8 Community Participation and Financing across all schools in the District for 2007/2008 by Commune	89
12.9 Percentage Student Flow Rates and Graduation by level 2006/2007, by Commune	90
13 Staff and Resources at the District	91
13.1 District Councilors elected in 2009	91
13.2 Committees of the Council.....	91
13.3 Board of Governors.....	91
13.4 Offices under Sala Krong, Sala Srok and Sala Khan	91
13.5 Municipality/District/Khan line offices.....	92
13.6 Properties and Equipment of District Administration	92
13.7 Registered Revenue of the District Administration in 2008	93
13.8 Services in the District	93
13.9 Civil Society Organizations active in the District.....	94
13.10 Private Sector Organizations.....	95
SECTION E: POVERTY DATA	97
14 Data on Poverty	99
14.1 Predicted Poverty Rates for 2009, by commune	99
14.2 Poverty data from survey.....	99

List of Abbreviations

#	Number
AGR	Agriculture
BR	Birth Registration
C. Pilot	Piloted Commune
C/S	Commune / Sangkat
CBO	Community-Based Organization
CDB	Commune Database
CDPD	Commune Development and Planning Database
CIP	Commune Investment plan
CLTS	Community Led-Total Sanitation
Comm.	Commune
Com Cov	Commune Covered
CPA	Complementary Package of Activities
CPS	Community Preschool
CCWC	Commune Committees for Women and Children
DANIDA	Danish International Development Agency
DDLG	Democratic Development and Local Governance Project (EC-UNDP)
DFID	Department For International Development (UK)
DIP	District Initiative Project
DIS	District Information System
District PDRD	District Office of Rural Development
District WP	District Work Plan
DIW	District Integration Workshop
DoLA	Department of Local Administration
Dr	Doctor
DWRM	District Office of Water Resource and Meterology
ECD	Early Childhood education (part of PE)
EMIS	Education Management Information System
Event IC	Celebration of International Days
FDH	Former District Hospital
GTZ	German Society for Technical Cooperation (Gesellschaft für Technische Zusammenarbeit GmbH)
Ha	Hectare
HC	Health Center
HC (NB)	Health Center (no building)
HH	Headed Household
HSI	Intervention for Health
HP	Health Post
HW	Hand Washing
ICC	Inter Commune Council
IFAD	International Fund for Agricultural Development
IND	Industry
Inter-commune	Inter-Commune Project Management Committee or Inter-commune project
IO	International Organization
LASED	Land Allocation for Socio-Economic Development
LGCR	Local Governance for Children's Rights
M&E	Monitoring and Evaluation
MA	Medical Assistant
MoEYS	Ministry of Education, Youth and Sports
MoH	Ministry of Health

MoP	Ministry of Planning
MPA	Minimum Package of Activities
MW1	Primary Midwives
MW2	Secondary Midwives
n/a	Not available
NCD	National Contracts Database
NCDD	National Committee for Sub-National Democratic Development
NGO	Non-Governmental Organization
NRML	Natural Resources Management and Livelihood
NU1	Primary Nurse
NU2	Secondary Nurse
OD	Operational District
ODF	Open Defecation Free
Ope. Costs	Operational Costs
Others	Other Staff
PBW	Public Works
PDoEYS	Provincial Department of Education, Youth and Sport
PDRD	Provincial Department of Rural Development
PDWRM	Provincial Department of Water Resource and Meteorology
PE	Parenting Education
PHAST	Participatory Hygiene and Sanitation Transformation
PHD	Provincial Health Department
PID	Project Information Database
PMC	Project Management Committee
Pop 04-05	Population Covered 2004 or 2005
PSDD	Project to Support Democratic Development through Decentralization and Deconcentration
RRD	Rural Road Development
RH	Referral Hospital
RILGP	Rural Investment and Local Governance Project
RPRP	Rural Poverty Reduction Program
RuLIP	Rural Livelihoods Improvement Program
SIDA	Swedish International Development Cooperation Agency
SPPA	Senior Provincial Program Advisor
TBA	Traditional Birth Attendant
UNDP	United Nations Development Project
UNICEF	United Nations Children's Fund
Vil	Village
Vil Cov	Village Covered
VIL-HC	Distance from Village to Health Center
WASH	Water, Sanitation and Hygiene
WRM	Water Resource and Meteorology

Glossary

C/S Fund: The Commune/Sangkat Fund is established and managed by the Government of Cambodia to provide financial support for development projects and administrative costs of Commune/Sangkat Councils. The amount is determined as a percentage of the National Budget (for 2009: 2.8% over the 2008 budget) and is expected to increase gradually over the years. The total 2009 budget under this fund is \$ 27,643,902 (of which \$ 19,272,170 is for Development Projects and \$ 8,371,731 for Administration). Under the Rural Investment and Local Governance Project the World Bank currently reimburses the costs of development projects if these meet the Bank's criteria.

CDB: the Commune Data Base is a national database, compiled by the Ministry of Planning, on the basis of detailed questionnaires, completed at village and commune level, which are then sent to the Departments of Planning for data entry. The most recent round of data collection took place at the end of 2008 (and is reflected in the District Data Books). Commune, District and Provincial Profiles can be generated from this database and should be available from provincial Departments of Planning.

CDPD: the Commune Development and Planning Database is a database maintained by Departments of Planning and Ministry of Planning, recording proposed activities as determined and prioritized by Commune and Sangkat Councils; the Temporary Agreements between these councils and supporting agencies, as decided at District Integration Workshops and details on projects that actually take place at commune, district and provincial levels.

CIP: The Commune Investment Plan is a rolling three-year plan, developed and decided by the Commune or Sangkat Council. It sets priorities and identifies the projects proposed for the years to come.

Commune and Sangkat (C/S): the Communes (in rural areas) and Sangkats (in urban areas) are the lowest and smallest units of local government. Councils are elected directly, once in five years, for the 1417 Communes and 204 Sangkats. In the C/S there are 14,119 villages, which have Village Chiefs, but don't constitute a formal level of local government.

DIP: the District Initiative Project is jointly supported by the MDLF (Multi-Donor Livelihood Facility (supporting the NRM&L Program)) and PSDD. In 2009 it covers 106 districts, 60% of the total in the country, with a budget of \$ 3.2 million. It is focused on capacity development in planning, democratic development, public competitive procurement, financial management and service delivery.

DIS: The District Information System is a national database maintained by NCDD, recording resources, staff, revenue, infrastructure and equipment available in the 193 Districts and Khans throughout the country. The last update took place in July 2009

District, Municipality and Khan constitutes the third level of Government in Cambodia. There are 159 rural Districts, 26 Municipalities and 8 Khans of Phnom Penh Capital. They all have Councils which were, for the first time, elected in May 2009, by the Commune/Sangkat Councilors. These councils have a mandate for 5 years.

DIW: District Integration Workshops are held between July and October, to bring Commune/Sangkat Councils, looking for support for their projects, together with the governmental and non-governmental agencies that may provide support.

ICC: Inter Communes Council projects are executed in 10 provinces under the Democratic and Decentralized Local Governance Project (DDLG). This five year project (2006-2010) is executed by Ministry of Interior and funded by the European Commission and UNDP. The project focuses on improving dialogue partnership and accountability; create a network of Commune Councils at the provincial and national level and support and contribute to local area development for poverty reduction. The work under the ICC component supports investments and services formulated through inter-commune dialogue and planning.

MEDiCAM: A non-profit and non-partisan membership organization for NGOs active in Cambodia's health sector. It is the primary networking agency for health-related NGOs

NCDD: the National Committee for sub-National Democratic Development is the inter-ministerial body charged with the implementation of the Organic Law (a key legislative document, adopted in 2008, outlining the envisaged decentralization). NCDD also channels substantial financial assistance by a number of Development Partners, to projects and programs at various levels. This amounted to over \$ 91 million in 2008. More information at: www.ncdd.gov.kh. This website also provides access to reports, manuals, legal documents, details on projects and more.

OD: the Operational Districts are the districts as defined and used by the Ministry of Health. These do not coincide with the 193 (Administrative) Districts and Khans, as used by all other RGC agencies. The Operational Districts are usually larger, and so there are 77 Operational Districts against 193 administrative Districts and Khans. However they do fit within the boundaries of administrative provinces.

PID: The Project Information Database is the database maintained by NCDD at national and sub national level, to follow all aspects of projects by Commune and Sangkat Councils, including the C/S Fund projects

Provincial Investment Fund (PIF)

The Provincial Investment Fund is allocated to all Provinces and Municipalities according to a population based formula. Part of the fund is earmarked for support to planning activities of the Provincial / Municipal Department of Planning; and to gender mainstreaming activities of the Provincial Department of Women's Affairs. The remaining "un-earmarked PIF" is allocated by PRDC to sectoral technical departments against established criteria and in response to proposals with prioritisation taking into account: priorities formulated by the CS Councils and aggregated by District into District Priority Activities Matrices (DPAM); alignment with national planning and poverty alleviation criteria, complementarity with other planned activities; and performance of the Department concerned in implementation of activities in previous years. With this provisional allocation, the Department then programs activities through the District Integration Process. Finally, the agreed activities, plus support costs amounting to no more than 25% of the total, are included in a sub-contract signed between PRDC and the Department, pursuant to the overall PSDD contract signed between NCDD and PRDC. Total budget has been around \$ 2 million per year.

Province: the 23 Provinces and Phnom Penh Capital City represent the 2nd layer of government. They vary in size, from very small, like Kep (approx. 36,000 people) and Pailin (approx. 70,000 people), or large but with small populations, like Mondulkiri (over 60,000 people), and Ratanakiri (over 153,000) to densely populated and large, like Kampong Cham (over 1.7 million people) and Kandal (approx. 1.4 Million people).

PSDD: the Project to Support Democratic Development through Decentralization and Deconcentration is funded by DFID (UK), SIDA (Sweden) and UNDP and runs from 2006 till the end of 2010 (including a one year extension). Annual budgets range from \$ 11 million to over \$ 18 million. The project provides core technical support to NCDD and to the provinces, financial support to the C/S Fund, District Initiative, Provincial Investment Fund and capacity building support through training, studies and advisory services.

RILGP: The Rural Investment and Local Governance Project is a World Bank funded project that provides substantial support to C/S Fund projects and to developing the required infrastructure, policies, systems and skills. It started in 2003 with a Loan for \$ 22 million for 2003-2007 and was then extended with a Grant of \$ 36 million for the period of 2007-2010. Discussions about a possible RILGP 2 are taking place between RGC and the World Bank.

RPRP: the Rural Poverty Reduction Project is a seven year project from 2004 till 2010, funded by IFAD and UNDP and implemented through the Ministry of Agriculture, Forestry and Fishery, supported by the Ministry of Interior and facilitated by NCDD. The project is active in the provinces Prey Veng and Svay Rieng and focuses on 120,600 households below poverty line. The objective is poverty reduction with the active participation of the poor through improved livelihoods, Strengthened capacity, Sustainable farming systems and natural resource management, new and/or rehabilitated infrastructure development, increase accessibility to technology, services and markets for their economic and social development.

RULIP: the Rural Livelihoods Improvement Project is implemented by the Ministry of Agriculture Forestry and Fisheries (MAFF)' Project Support Unit- PSU, with the NCDD playing the role of cooperating agency. Funded by IFAD and UNDP, the project will run till 2014. The target group consists of poor households who have little or even no land, few livestock or other assets and often many dependents. The main goal of the project is to directly or indirectly improve the livelihood systems, food security and incomes of a total of 33,900 rural poor, ethnic minority and female headed households in targeted village of Kratie, Preah Vihear and Ratanakiri provinces in a sustainable manner.

Seth Koma: The UNICEF funded Seth Koma program focuses on measurable action for children and women. During 2006 -2010 it is implemented in six provinces. Government and UNICEF pursue a set of inter-related goals, addressing critical stages of the life cycle of the child: a) Mothers have safe pregnancies and deliveries and healthy newborns; b) best possible start in life of infant; c) Children enter schools at the right age of six years; d) Children are protected from exploitation, abuse, violence, discrimination and other risks; and e) Youth and adolescents acquire life skills, express their views, participate in the decisions.

Preface

The Government of Cambodia attaches great importance to optimal use of scarce resources and to participatory planning and management at all levels. The Organic Law which was adopted in 2008 provides the legal context for further steps towards improving and decentralizing planning, management and monitoring, and towards greater accountability and transparency of institutions at sub-national levels.

The Government has established elected Councils at the sub-national levels, and we will progressively give them the responsibilities, together with the human and financial resources, to deliver a wide range of public services. They will be more democratic, more efficient, more transparent and accountable, better at addressing gender and other inequalities, and at fighting corruption. We recognize that development does not come from government alone; it needs the involvement of citizens, civil society and the private sector, and the new system will facilitate this.

A central element in this process is the availability of information on any aspect of development to all concerned parties. The newly elected Councillors at District and Khan level, line departments operating at these levels, but also NGOs, Development Partners, Commune Councillors and citizens throughout Cambodia need information on problems and requirements, resources and opportunities, services and agencies, plans and projects. They will need such information to better understand the present situation, set targets for the future, monitor progress, know what others are doing and to apply resources wisely and this is the reason the District Data books will be so valuable.

The District Data Books are a major step towards full transparency and towards informed planning and decision-making. They provide all available data at District, Khan, Commune and Sangkat level in easily accessible formats, in Khmer and English, through over 16,000 printed copies, CD-ROMs and the NCDD website.

This is the first time in Cambodia (and possibly in South East Asia) that such detailed information is made so widely available and NCDD should be commended for the hard work that has gone into this. We also thank the Ministry of Planning, which provided the detailed data of the Commune Data Base, the sectoral ministries and provincial authorities who contributed data and the Development Partners who provided financial support.

It is our sincere hope that the publication of the District Data Books will strengthen capacities, especially at district levels, for evidence-based development planning. We also hope that this information will deepen the understanding among Ministries, Provincial Authorities, Development Partners, NGOs and research agencies of the realities at commune and district levels.

We call upon all to use and distribute this information, complement or correct where appropriate and to contribute new data in the years to come.

Sar KHENG

Deputy Prime Minister, Minister of Interior and Chairman of NCDD

Introduction

Purpose

The purpose of the District Data Books is to bring together information on any aspect of life and development of Districts, Khans, Communes and Sangkat, together and make this widely available. The primary targets are the newly elected District Councilors, district level line departments, provincial agencies, Development Partners and NGOs operating at this level. They need detailed knowledge on current living conditions, natural resources, infrastructure, agriculture and other economic activities, current service levels, past and planned projects and available resources.

While much information exists on many of the above aspects, it is often hard to access that information and much is lost to reports, databases and statistics that are not widely shared. Data are often only available in one language and often out-of-date, and many reports cover only one sector or region.

We found that these problems are especially acute at the district level. Now that Districts are becoming a much more significant level of local government and development planning, there is an urgent need for wide-ranging data to be used for setting base-lines, planning and prioritizing, monitoring and learning.

Approach

We have attempted to identify and compile all available statistics, reports, maps and other data at district and/or commune level. From this we have selected information that is available for all or most districts, reasonably reliable and up-to-date, sufficiently detailed and of possible interest to development planners, decision makers, agencies and citizens.

The major sources of the information in these District Data Books are:

- a) The Commune Data Base information over the years 2006 to 2009 (the most recent data were collected late last 2008), as compiled by the Ministry of Planning
- b) Detailed information directly collected from the Ministry of Health, the Ministry of Education, Youth and Sports and (for maps) the Ministry of Land Management, Urban Planning and Construction
- c) The Project Information Database (PID) at NCDD (up-to-date)
- d) The Commune Development and Planning Database (CDPD) (up to date)
- e) The District Information System (DIS) (updated per Mid 2009)
- f) Direct data collection at provincial and district level on private sector, irrigation, roads, and electricity, through provincial agencies
- g) Medical data collected from MEDiCAM
- h) The ID Poor Project – for poverty data on a number of provinces and districts
- i) NCDD's work on predictive poverty rates
- j) Specific projects for outputs, plans and budgets (Seth Koma, RILGP, RPRP and ICC)

Limitations of the data

We are fully aware that the data we collected are not always complete, consistent or correct. While we have rejected information that was wrong or very incomplete, we decided not to aim for statistical and scientific perfection, but to include information that is useful, relevant

and comprehensive. We also accepted different sources for the same data as this may encourage discussion on the quality of the respective data.

We strongly encourage anyone who notes errors or incompleteness in these data to contact us and to share their data. We hope that the next round of producing such District Data Books can draw on wider sources and more complete data.

We encourage the District Administrations, who receive these data also in digital format, not only to use these for their planning and monitoring, but also to start correcting and updating these data and to share new data with NCDD for future use.

Contents

The information in the following pages is organized in five sections:

- a) **Geographical data:** this section provides maps on infrastructure and administration and on land use and natural resources management. These maps are also provided in large format to all Districts and Khans.
- b) **District Profile:** this presents wide ranging data, covering 2006 – 2009, at district and commune level, extracted from the Commune Data Base, but edited for better understanding.
- c) **Plans and Projects:** this section presents development priorities determined by Commune and Sangkat Councils, Temporary Agreements, outputs and expenditure of major projects at Commune and District level over 2006 – 2008 and plans and budgets for 2009.
- d) **Services and Organizations:** this section provides details on key infrastructure (roads, electricity, irrigation systems) and services in health and education at district and commune level. It also provides an inventory of resources at the District Administration, NGOs operating in the district and private sector agencies active in the district.
- e) **Poverty Data:** this section provides predicted poverty rates for 2009 for all districts and communes and detailed poverty data compiled and processed by the ID Poor project for those that have been covered by this project.

The future

It is our hope that this is the start of a longer-term process. We hope that a next edition of these District Data Books will offer more comprehensive, correct and up-to-date information. We hope that the District Administrations will not only start using this information, but also improve and update it. For this they are all provided with the full data set in digital format.

We invite agencies, projects and experts to send reports, statistics and maps that could be used for a next version to us and we invite all users of the District Data Books to inform us about errors, updates and inconsistencies. Please contact us through info@ncdd.gov.kh

We now invite you to browse through this data book. You may open this randomly or use the table of contents and go to the aspects that have your special interest.

We hope that you will be informed, surprised and assisted. We hope, above all, that this information will lead to a deeper understanding of causes and effects of poverty, to purposeful decisions on how to tackle those causes and to greater transparency in using scarce resources for the benefit of all.

Martin de Graaf
Program Advisor, PSDD/NCD

SECTION A: GEOGRAPHY

1 Administration and Infrastructure

Please see separate folder containing A3 maps.

2 Land Use and Natural Resources

Please see separate folder containing A3 maps

3 Geography

3.1 Land Area

Total Land Area (ha)	Forest Land Area (ha)		Cultivation Land Area (ha)	Construction Land Area (ha)	Other Land Area (ha)
	Total	Flooded Forest Area			
337520	0	0	11502	0	0

3.2 Distances between Offices

Location	Distance (Km)
From District Office to C/S Office of Ta Tey Leu	0
From District Office to C/S Office of Pralay	0
From District Office to C/S Office of Chumnoab	0
From District Office to C/S Office of Ruessei Chrum	0
From District Office to C/S Office of Chi Phat	0
From District Office to C/S Office of Thma Doun Pov	0

SECTION B: DISTRICT PROFILE¹

¹ All data in this section come from the Commune Database (CDB) unless otherwise specified. These include primarily new CDB data, collected late 2008, and some data from earlier years. Please note that percentages are rounded to the nearest whole number.

1 General Information

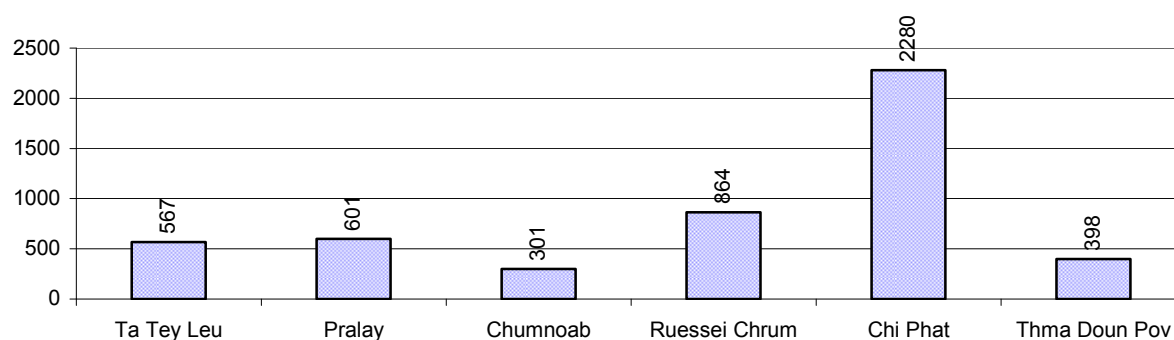
1.1 Population of the District

1.1.1 Total Population

Number of families	2005	2006	2007	2008
Total number of families	1,519 families	1,071 families	1,199 families	1,200 families
Increase (+)/Decrease (-) in nr of families		-29%	12%	0%
Total population	6,619 pers	4,626 pers	5,062 pers	5,011 pers
Increase (+)/Decrease (-) in nr of people		-30%	9%	-1%
Number of female Headed Households (HH)	250 families	401 families	487 families	256 families

Note: Percentages of population and increase/decrease are calculated on basis of the previous year. A negative sign in front of the percentage indicates a decrease in population.

1.1.2 Population, by Commune, in 2008



1.1.3 Population, by Age Group, over 3 years

Population by age group	2006	2007	2008	
	%	%	%	Number
Age 0-5 years (as percentage of the population)	17%	18%	18%	886 persons
Male 0-5 yrs	50%	50%	49%	431 persons
Female 0-5 yrs	50%	50%	51%	455 persons
Age 6-17 (as percentage of the population)	30%	32%	30%	1,485 persons
Male 6-17 yrs	49%	51%	49%	727 persons
Female 6-17 yrs	51%	49%	51%	758 persons
Age 18-60 (as percentage of the population)	47%	45%	45%	2,270 persons
Male 18-60 yrs	48%	48%	51%	1,159 persons
Female 18-60 yrs	52%	52%	49%	1,111 persons
Age 61 above (as percentage of the population)	6%	6%	7%	370 persons
Male 61	49%	46%	46%	172 persons
Female 61	51%	54%	54%	198 persons

Note: The overall percentage for each age group is calculated on the basis of the total population. The gender distribution of each group is calculated on the basis of the population within that particular age group.

1.2 Occupations

1.2.1 Percentage of families with a particular Occupation over 3 years

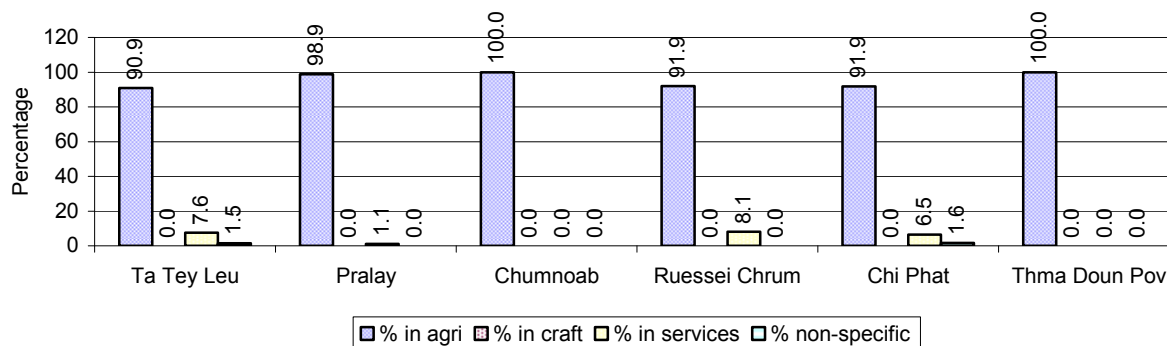
This table shows the percentage of the population who have a particular occupation (job), for example the percentage of the population in the district who are rice farmers, furniture crafter, trader, etc.

Description	2006	2007	2008	
	%	%	%	Number
Families whose main occupation is agriculture	92%	89%	94%	1,128 Families
Families whose primary occupation is rice farming	63%	62%	78%	934 Families
Families whose primary occupation is cultivating long-term crops	10%	8%	6%	71 Families
Families whose primary occupation is cultivating short-term crops	4%	8%	6%	70 Families
Families whose primary occupation is cultivating vegetable	1%	1%	1%	6 Families
Families whose primary occupation is fisherman	0%	2%	1%	10 Families
Families whose primary occupation is livestock farmer	3%	4%	1%	7 Families
Families whose primary occupation is NTFP collection	10%	5%	3%	30 Families
Families whose main occupation is craft work	0%	0%	0%	0 Families
Families, whose main occupation is in furniture craft, wooden, rattan, vine, bamboo	0%	0%	0%	0 Families
Families whose main occupation is in metal, aluminum, glass goods production	0%	0%	0%	0 Families
Families whose main occupation is food production	0%	0%	0%	0 Families
Families whose main occupation is tire, plastics and rubber goods production	0%	0%	0%	0 Families
Families whose main occupation is textile, clothing goods production	0%	0%	0%	0 Families
Families whose main occupation is in other production, not listed above	0%	0%	0%	0 Families
Families whose main occupation is services	3%	3%	5%	62 Families
Families whose main occupation is trade	1%	2%	2%	27 Families
Families whose main occupation is repair	0%	1%	1%	8 Families
Families whose main occupation is providing transport services	1%	1%	1%	16 Families
Families whose main occupation is providing other services	0%	0%	1%	11 Families
Families whose main occupation is not clear (or multi)	6%	7%	1%	10 Families

Note: The occupation percentages are calculated on the basis of the total number of families.

1.2.2 Percentage Families that work in one of four occupational sectors, by Commune in 2008

This table indicates the percentage of families involved in one of four occupation types: agriculture, craft, services or non-specific (other). Please note agriculture includes forestry activities such as cutting down trees and gathering gum from the trees.



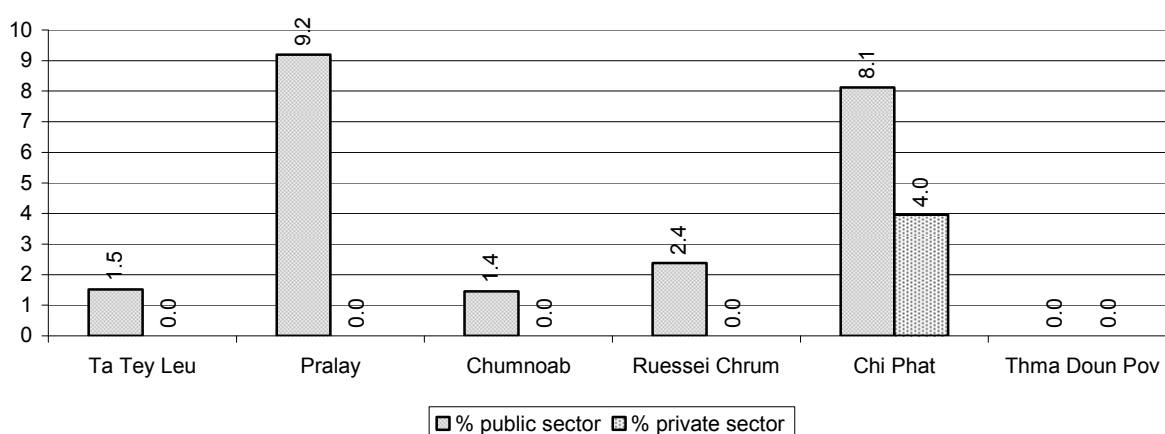
Note: Calculated on the basis of the total number of families within a commune.

1.2.3 Percentage of Families with public Sector, private Sector or uncertain Jobs, over 3 years

Description	2006	2007	2008	
	%	%	%	Number
Families that have a family member who is a government official, staff or worker	2%	6%	5%	65 families
Families that have a family member who is a private sector staff or worker	1%	1%	2%	20 families
Number of people aged 18-60 with uncertain/irregular jobs	5%	8%	12%	275 persons

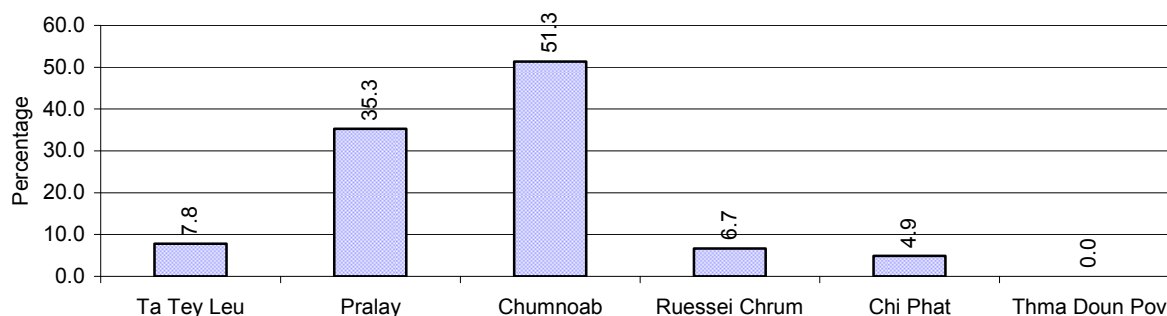
Note: In the first two rows percentages are calculated on the basis of the total number of families. In the third row the percentage is calculated on the basis of the total number of people aged 18-60 years.

1.2.4 Percentage of Families with public or private Sector Jobs, by Commune in 2008



Note: Calculated on the basis of the total number of families in the commune

1.2.5 Percentage of People aged 18-60 years with uncertain/irregular Jobs, by Commune, in 2008.



1.3 Property

1.3.1 Housing types and facilities over 3 years

This table shows the percentage of people living in a certain type of house. It also indicates how many houses have electricity or battery powered lights and how many have TV.

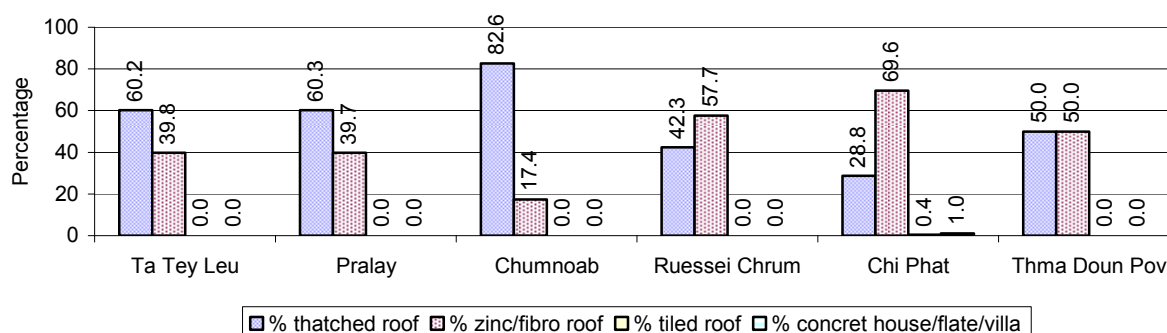
House Type	2006	2007	2008	
	%	%	%	Number
House with thatched roof	46 %	44 %	44 %	483 houses
House with zinc/fibro roof	54 %	56 %	55 %	599 houses
House with tiled roof	0 %	0 %	0 %	2 houses
Flats/apartments (with many families living)	0 %	0 %	0 %	2 houses
Concrete house or flat (with one family living)	0 %	0 %	0 %	3 houses
Villa house	0 %	0 %	0 %	0 houses
Houses with electricity	5 %	5 %	7 %	75 houses
Houses with battery light	27 %	31 %	34 %	368 houses
Houses with TV	16 %	15 %	21 %	229 houses

Note: Calculated against the total number of houses

1.3.2 Families living on public Land or without a permanent House

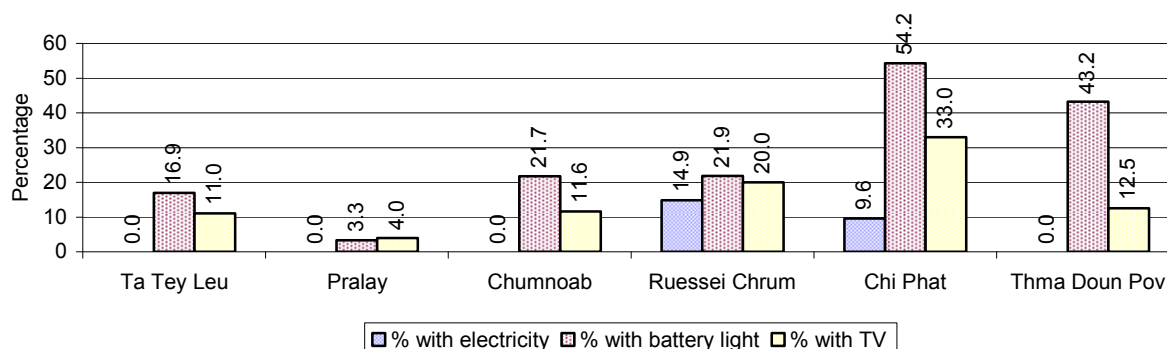
Living situation	2006	2007	2008
Families living in a house on public land	10 families	19 families	16 families
People, without permanent housing	6 person(s)	4 person(s)	3 person(s)

1.3.3 Percentage of Population living in a particular type of House, by Commune, in 2008



Note: Calculated against the total number of houses in each commune

1.3.4 Percentage of Houses with Electricity, Battery Lights and/or TVs, by Commune, in 2008



Note: Calculated against the total number of houses in each commune

1.3.5 Types of Vehicles and their ratio to Families across 3 years

This table shows the number of families per vehicle in the district. The last column shows the total number of each type of vehicle in the district for 2008.

Description	2006 ratio	2007 ratio	2008	
			Ratio	Number
Bicycle and bicycle with trailer	2	3	6	204
Ox-carts and horse-carts	89	52	52	23
Motorbike/with trailer	6	4	3	418
Motor tri-cycle	N/A	N/A	N/A	0
Large Transportation				
Total number of cars/trucks	56	52	67	18
Locally made vehicles	N/A	N/A	N/A	0
Trucks for goods transport	119	80	109	11
Buses/mini buses for passengers	N/A	N/A	N/A	0
Family cars	107	150	171	7
Agriculture machinery				
Tractors used for plowing	357	109	200	6
Power-tillage used for plowing	268	171	55	22
Other type of machinery				
Other type of machinery	N/A	N/A	N/A	0
Water transportation				
Row boats	8	11	10	119
Total number of motor boats	119	50	40	30
Motor boats used for fishing	N/A	80	400	3
Motor boats used for passengers	134	133	44	27
Motor boats used for goods transporting	1,071	N/A	N/A	0

Note: Ratio of families to a particular type of vehicle is the result of the total number of families divided by total number of that type of vehicle. Other types of vehicles, such as bulldozer, excavator, rollers etc. are not listed.

2 Infrastructure and Economy

2.1 Roads in meters over 3 years

Description	2006	2007	2008
Bituminous road	3,481 m	0 m	0 m
DBST, Macadam road	3,482 m	0 m	0 m
Concrete road	0 m	0 m	0 m
Laterite road	30,651 m	32,700 m	62,560 m
Constructed earth road	25,251 m	27,500 m	27,960 m
Un-constructed earth road	25,251 m	22,500 m	27,160 m

2.2 Sewerage Pipes in meters over 3 years

Description	Sewage pipe length		
	2006	2007	2008
Total length of sewage pipe, diameter 30-50 cm	0 m	4 m	4 m
Length of newly constructed sewage pipe, diameter 30-50 cm	0 m	4 m	4 m
Length of sewage pipe, diameter 30-50 cm needs repair/rehabilitation	0 m	4 m	4 m
Total length of sewage pipe, diameter of pipe 60-100 cm	5 m	4 m	100 m
Length of newly constructed sewage pipe, diameter 60-100 cm	0 m	100 m	100 m
Length of sewage pipe, diameter 60-100 cm needs repair/rehabilitation	0 m	4 m	100 m
Sewage pipe, diameter of pipe over 100 cm	0 m	0 m	0 m
Length of newly constructed sewage pipe, diameter over 100 cm	0 m	0 m	0 m
Length of sewage pipe, diameter over 100 cm needs repair/rehabilitation	0 m	0 m	0 m

2.3 Drainage and Bridges

Construction Type	2006		2007		2008	
	place(s)	Length	place(s)	Length	place(s)	Length
Single pipe culvert	1	2m	1	4 m	34	77 m
Double-pipe culvert	1	5m	0	0 m	3	15 m
Box pipe culvert	0	0m	0	0m	4	8 m
Wooden bridge	7	78m	8	82m	5	16 m
Concrete bridge	0	0m	0	0m	1	17 m
Bale bridge	0	0m	0	0m	0	0 m
Spillway construction	0	0m	0	0m	1	12 m

2.4 Services in the District

Descriptions	Number of places by year		
	2006	2007	2008
Public			
Electricity generating stations	3	3	10
Health clinics	2	0	2
Private			
Bicycle and motorcycle repair places	3	4	6
Agricultural machinery, tools and equipment repair places	0	0	0
Electronic tool repair places	2	2	2
Battery-charging services	12	15	12
Handicraft places, wooden furniture and forest by-products	0	0	0
Other handicraft places (excluding furniture)	0	0	0
Small-scale services (hairstresser, phone service, massage, Karaoke, etc)	85	8	9

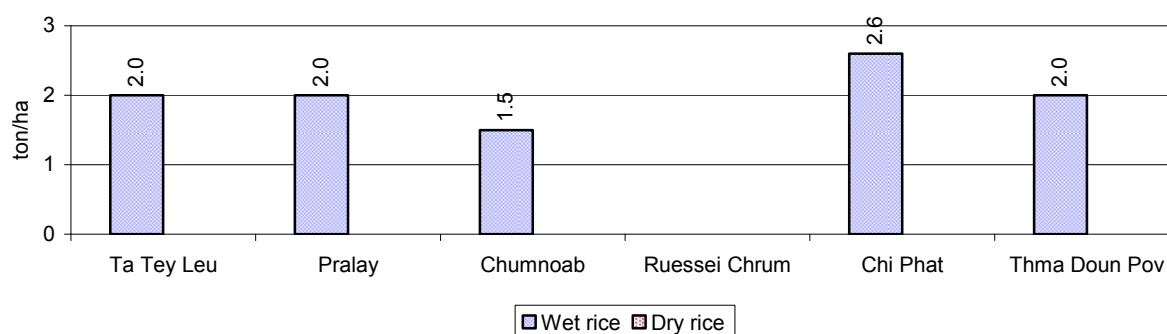
Descriptions	Number of places by year		
	2006	2007	2008
Small-scale food shop businesses (Food, groceries, drink shop, etc)	3	3	9
Small-scale rice mills	18	22	30
Medium or large-scale rice mills	0	0	0
Small-scale markets	1	1	1
Large-scale market	0	0	0
Alcohol refinery places	2	3	5
Pharmacies and small drug stores	2	2	0
Hotels	0	0	0
Guest houses	1	1	4
Restaurants	0	0	1
Gasoline stations	0	0	0

2.5 Agriculture

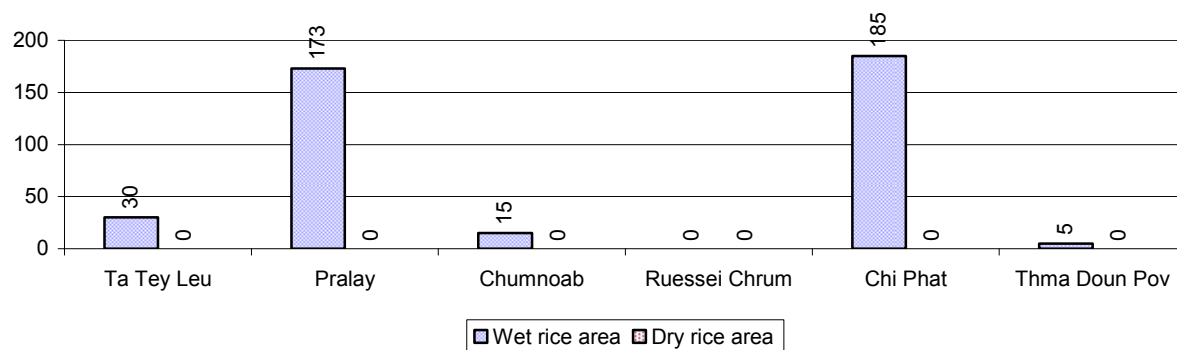
2.5.1 Rice cultivation in the District over 3 years

Description	2006	2007	2008
Total dry rice land area	0 ha	25 ha	0 ha
Actual dry rice cultivation area	0 ha	25 ha	0 ha
% actual cultivation to total land	-%	100%	-%
Total dry rice production	- tonne(s)	25 tonne(s)	- tonne(s)
Average dry rice yield	- tonne(s)/ha	1.0 tonne(s)/ha	- tonne(s)/ha
Total wet rice land area	687 ha	807 ha	1,330 ha
Actual wet rice cultivation area	148 ha	151 ha	408 ha
% actual cultivation to total land	22 %	19%	31%
Total wet rice production	177.60 tonne(s)	72.98 tonne(s)	824.16 tonne(s)
Average wet rice yield	1.2 tonne(s)/ha	0.5 tonne(s)/ha	2.0 tonne(s)/ha
Total intensive rice land area	136 ha	159 ha	465 ha
Actual intensive rice cultivation area	102 ha	104 ha	- ha
Average intensive rice yield	1.9 tonne(s)/ha	0.4 tonne(s)/ha	- tonne(s)/ha
Actual upland rice cultivation area	349 ha	539 ha	936 ha
Total upland rice production	405 tonne(s)	852 tonne(s)	881 tonne(s)
Average upland rice yield	1.2 tonne(s)/ha	1.6 tonne(s)/ha	0.9 tonne(s)/ha

2.5.2 Estimated wet and dry Season Rice Yield in tonne(s)/Ha, by Commune, in 2008



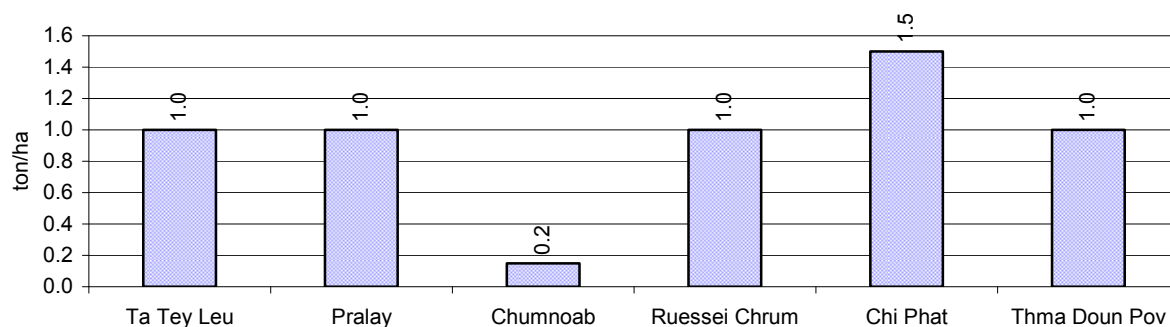
2.5.3 Cultivated wet and dry Season Rice areas in Ha, by Commune, in 2008



2.5.4 Estimated intensive Rice Yields in tonnes/Ha, by Commune, for 2008

There were no estimated intensive rice yields in this District in 2008

2.5.5 Estimated upland Rice Yield in tonnes/Ha, by Commune, for 2008

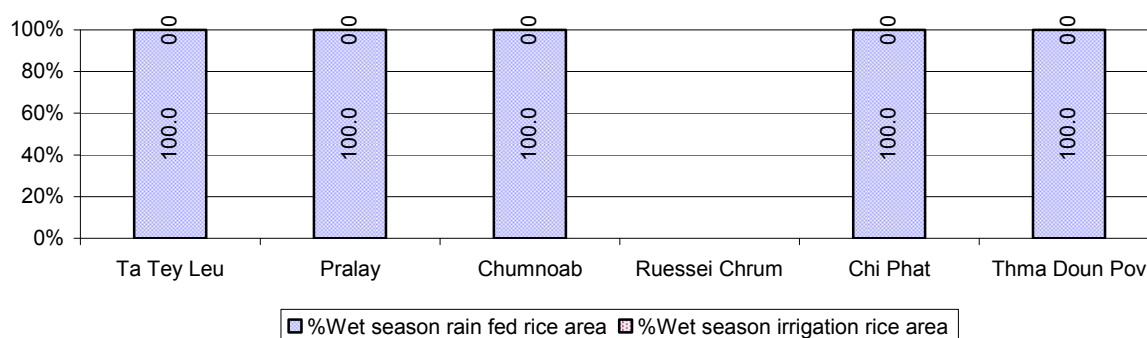


2.5.6 Wet season Rice irrigation across 3 years

Description		2006 %	2007 %	2008	
				%	Number
Total area of wet season rain fed rice land		100%	100%	100 %	408 ha
Percentage of wet season rice land that is irrigated; and for 2008 area in Ha		0 %	0 %	0 %	0 ha
Where	Area irrigated from canal/dam	- %	- %	- %	0 ha
	Area irrigated from river, stream, lake, natural pond	- %	- %	- %	0 ha
	Area irrigated from drilled well	- %	- %	- %	0 ha
	Area irrigated from dug pond	- %	- %	- %	0 ha

2.5.7 Water sources for wet Season Rice Cultivation, by Commune, in 2008

This chart shows the percentage of wet season rice cultivation receiving water from rain (natural) and from irrigation.



2.5.8 Access to Irrigation

Description	2006 %	2007 %	2008	
			%	Number
Families who have access to irrigation water	0%	0%	0%	0 families
Families who have irrigation wells	0%	0%	0%	0 families

Note: Calculated against the total number of families are rice farmers

2.5.9 Number of Irrigation Wells over 3 years

Description	2006	2007	2008
Number of irrigation wells	0 wells	0 wells	0 wells

2.5.10 Percentage of Families with access to (supplemental) Irrigation for wet Season Rice cultivation, by Commune, in 2008

There are no families with access to supplemental irrigation for wet season rice irrigation in this District in 2008

Note: % of families, with access to irrigation is calculated against the total number of families, whose main occupation is rice farming. Irrigated wet rice land area is calculated against the total actual wet rice land cultivated areas

2.5.11 Irrigation Wells, by Commune, in 2008

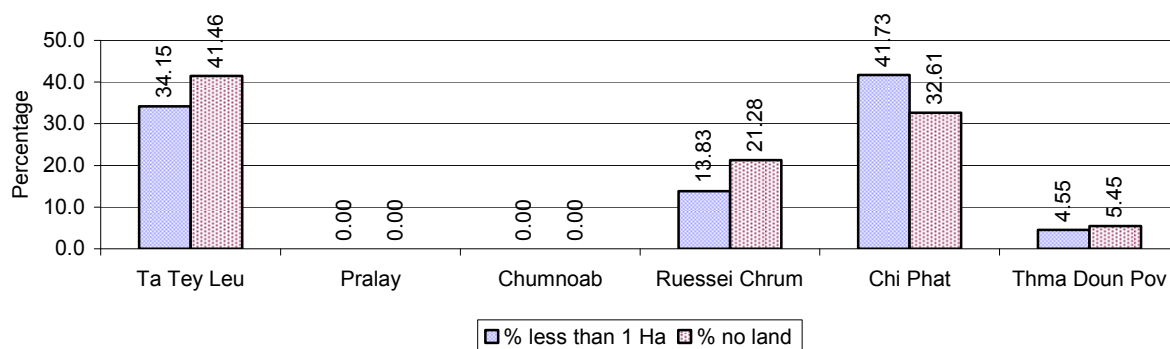
There are no irrigations wells in this District in 2008

2.5.12 Farmers owning less than one hectare of Rice Land

Description	2006 %	2007 %	2008	
			%	Number
Families who have less than one hectare of rice land	18%	3%	24%	220 families
Families who do not own any rice land	28%	2%	21%	196 families

Note: Calculated on basis of total number of families who are rice farming

2.5.13 Percentage of Farmers with less than one Hectare or no Rice Land, by Commune, in 2008

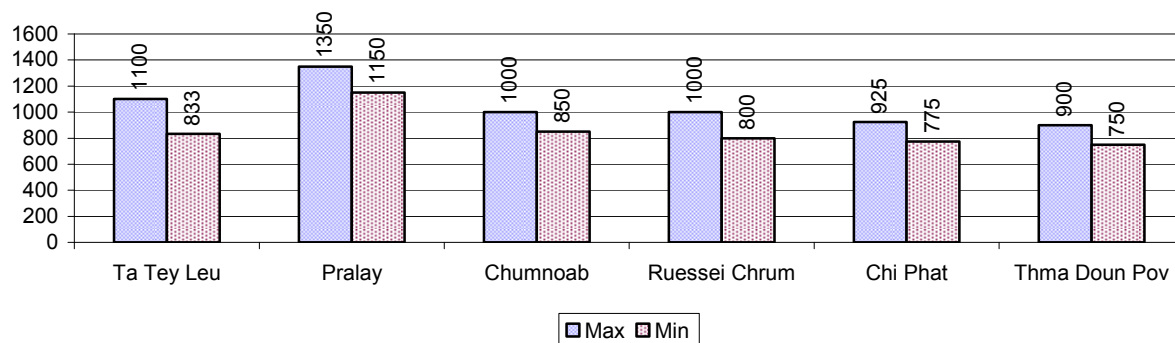


Note: Calculated on basis of total number of families who are rice farming

2.5.14 Average farm-gate Prices of Rice, over 3 years

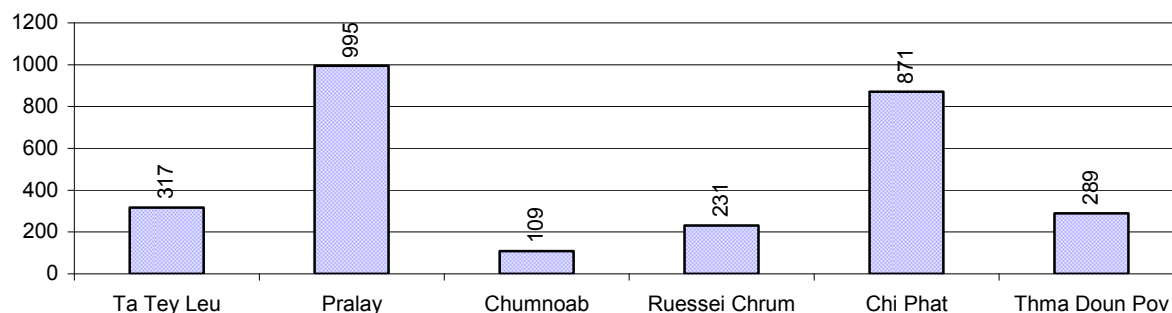
Description	2006	2007	2008
Maximum average farm gate price	540 Riels/Kg	688 Riels/Kg	1,046 Riels/Kg
Minimum average farm gate price	451 Riels/Kg	588 Riels/Kg	860 Riels/Kg
Average farm gate price	495 Riels/Kg	638 Riels/Kg	953 Riels/Kg
Average rice production per person	148 Kg/person	208 Kg/person	554 Kg/person

2.5.15 Minimum and maximum farm-gate Prices of Rice in Riel/kg, by Commune, in 2008



2.5.16 Production of Paddy in Kgs/Person, by Commune, in 2008

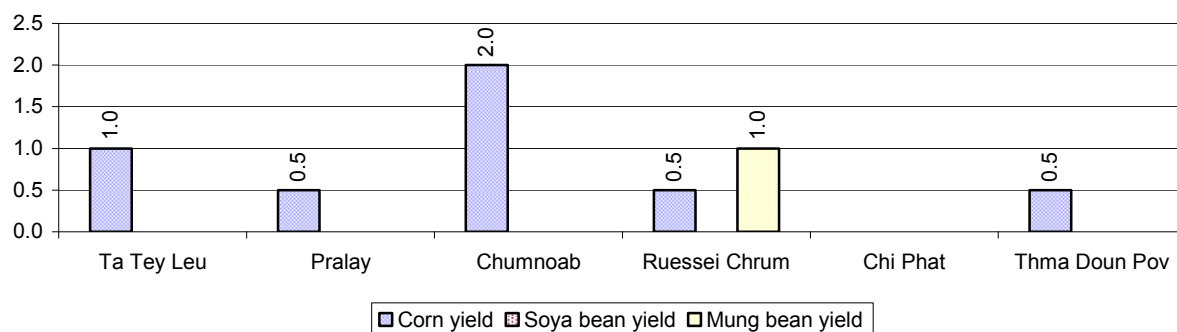
This table shows how much paddy (harvested rice) is produced in a year in a commune, in kgs per person.



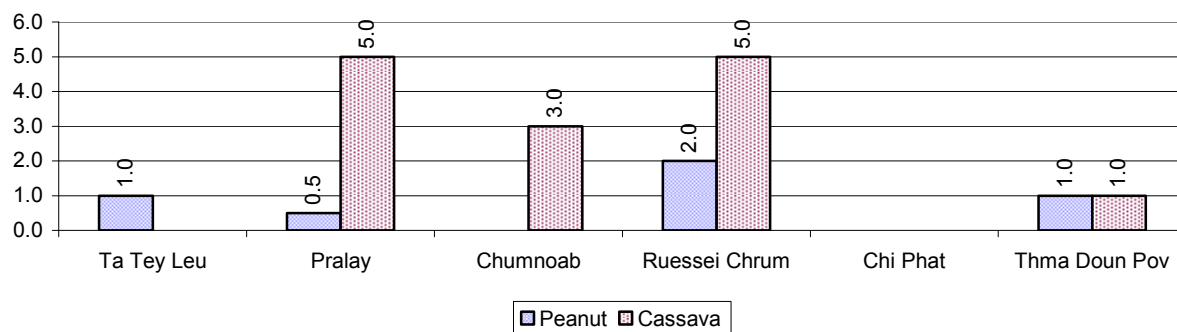
2.5.17 Production of other Crops, over 3 years

Crops	2006	2007	2008
Corn cultivation area	24 ha	11 ha	61 ha
Estimated corn yield	3.7 tonne(s)/ha	1.5 tonne(s)/ha	0.9 tonne(s)/ha
Estimated corn production	88 tonne(s)	17 tonne(s)	55 tonne(s)
Soya bean cultivation area	0 ha	0 ha	0 ha
Estimated Soya bean yield	- tonne(s)/ha	- tonne(s)/ha	- tonne(s)/ha
Estimated Soya bean production	- tonne(s)	- tonne(s)	- tonne(s)
Mungbean cultivation area	3 ha	0 ha	5 ha
Estimated Mungbean yield	1.5 tonne(s)/ha	- tonne(s)/ha	1.0 tonne(s)/ha
Estimated Mungbean production	5 tonne(s)	- tonne(s)	5 tonne(s)
Peanut cultivation area	0 ha	2 ha	122 ha
Estimated Peanut yield	- tonne(s)/ha	1.5 tonne(s)/ha	1.1 tonne(s)/ha
Estimated Peanut production	- tonne(s)	3 tonne(s)	137 tonne(s)
Cassava cultivation area	0 ha	0 ha	12 ha
Estimated Cassava yield	- tonne(s)/ha	- tonne(s)/ha	3.5 tonne(s)/ha
Estimated Cassava production	- tonne(s)	- tonne(s)	42 tonne(s)
Sweet potatoes cultivation area	0 ha	0 ha	2 ha
Estimated Sweet potatoes yield	- tonne(s)/ha	- tonne(s)/ha	0.8 tonne(s)/ha
Estimated Sweet potatoes production	- tonne(s)	- tonne(s)	2 tonne(s)
Sesame cultivation area	0 ha	0 ha	0 ha
Estimated Sesame yield	- tonne(s)/ha	- tonne(s)/ha	- tonne(s)/ha
Estimated Sesame production	- tonne(s)	- tonne(s)	- tonne(s)

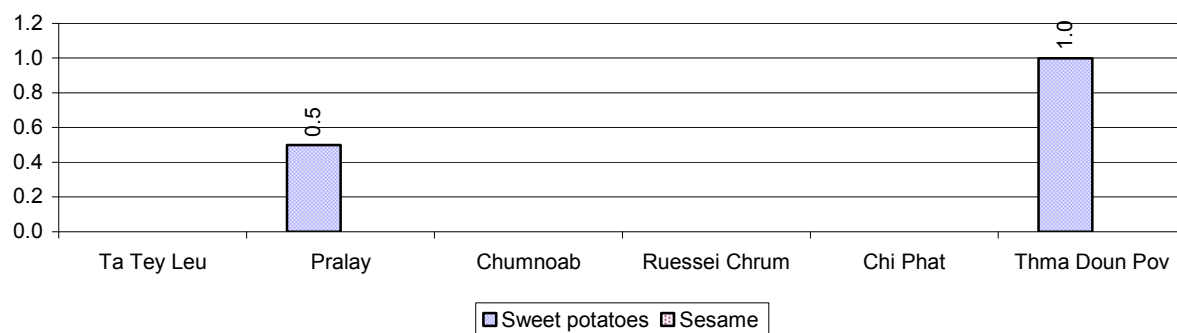
2.5.18 Yields of Corn, Soya beans and Mungbeans in tonne(s)/ha, by Commune, in 2008



2.5.19 Yields of Peanuts and Cassava in tonne(s)/ha by Commune, in 2008



2.5.20 Yields of Sweet Potatoes and Sesame in tonne(s)/ha, by Commune, in 2008



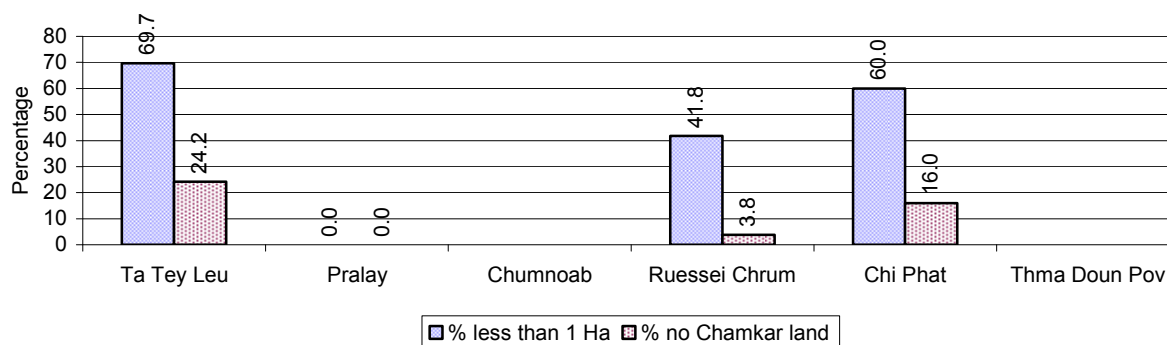
2.5.21 Percentage Farmers who own less than 1 Ha or no Chamkar land

Description	2006 %	2007 %	2008	
			%	Number
Families, who own less than 1ha of Chamkar land	15%	1%	48%	71 families
Families, with no Chamkar land	2%	3%	10%	15 families

Note 1: Calculated as a percentage of the total number of families whose main occupation is Chamkar (not rice) farming

Note 2: Chamkar land is no-rice land, i.e. other crops

2.5.22 Percentage Farmers owning less than 1 ha or no Chamkar land, by Commune, in 2008



Note: Percentage is calculated among families, who Chamkar farm as a main occupation, not the total population of the commune.

2.5.23 Percentage of Families raising Cattle/Buffalo, over 3 years

Description	2006 %	2007 %	2008	
			%	Number
Families raising cattle/buffalo	20%	29%	32%	381 families
Families raising cattle/buffalo as labor forces	9%	18%	20%	239 families

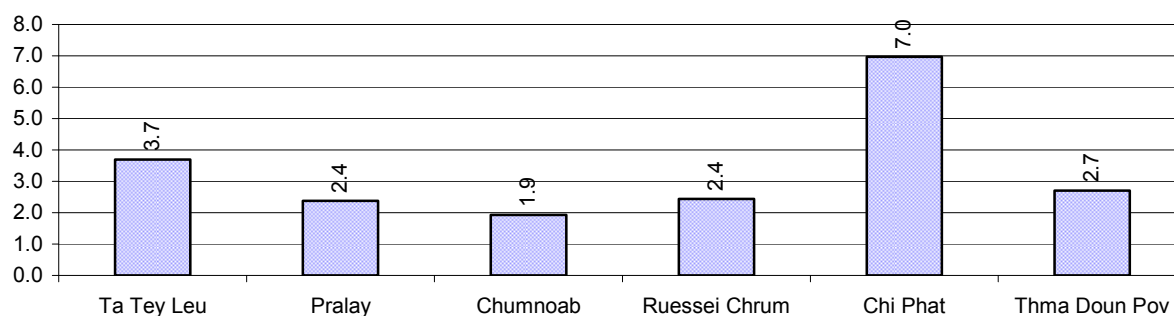
Note: Calculated against the total number of families.

2.5.24 Number of Cattle/buffalo being raised, over 3 years

Description	2006	2007	2008
Total number of cattle/buffalo	1,215 head(s)	1,874 head(s)	1,459 head(s)
Average cattle/buffalo per families	5.8 head(s)/families	5.4 head(s)/families	4 head(s)/families

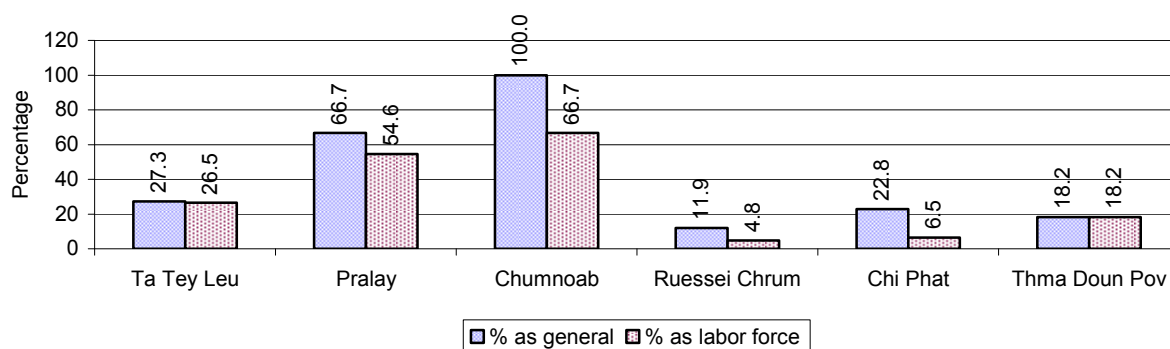
Note: Calculated by dividing total number of cattle/buffalo by total number of cattle/buffalo raising families

2.5.25 Average number of Cattle/Buffalo per Family, by Commune, in 2008



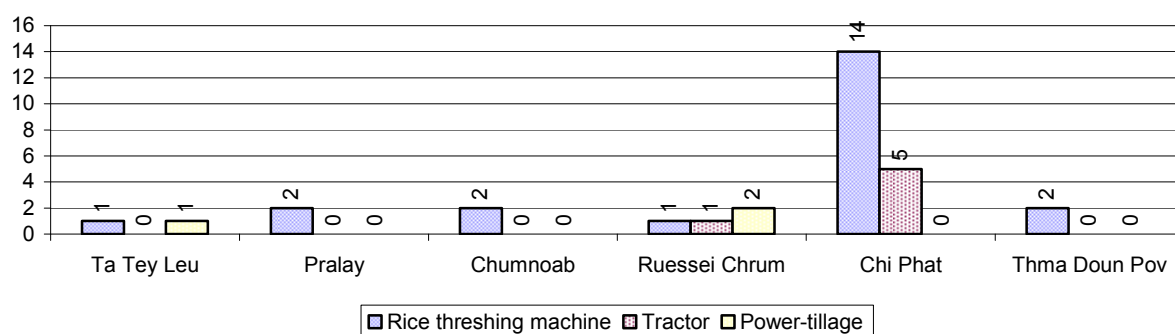
Note: Calculated by dividing total number of cattle/buffalo by total number of cattle/buffalo raising families

2.5.26 Percentage Families raising Cattle/Buffalo, for general and labor purposes in 2008, by Commune



Note: Calculated using the total number of families raising cattle/buffalo against the total number of families.

2.5.27 Type and number of agricultural Machines, by Commune, in 2008

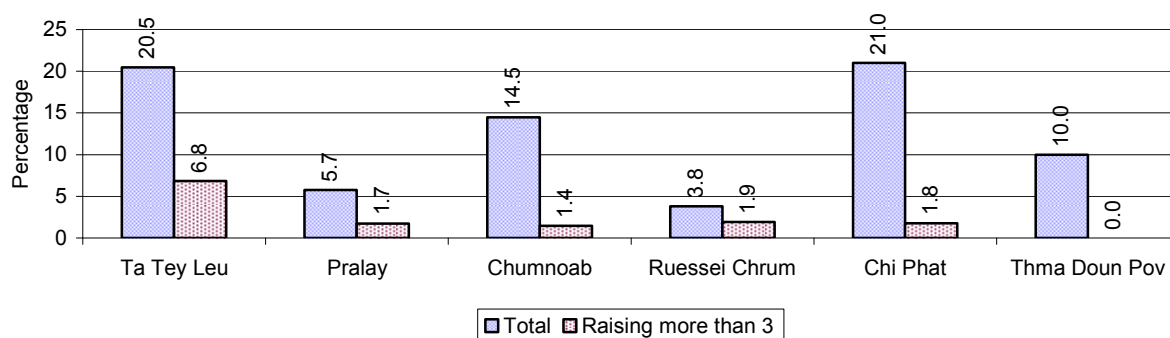


2.5.28 Livestock-producing Households over 3 years

Description	2006 %	2007 %	2008	
			%	Number
Total number of families raising pigs	21%	23%	14%	172 families
number of families raising more than 3 pigs	4%	4%	2%	26 families
Total number of families raising chickens	89%	86%	82%	979 families
number of families raising more than 3 chickens	81%	75%	65%	774 families
Total number of families raising ducks	5%	6%	10%	124 families
number of families raising more than 5 ducks	2%	3%	7%	85 families
Total number of families raising goats or sheep	0%	0%	0%	0 families
Total number of families raising horses	0%	0%	0%	0 families

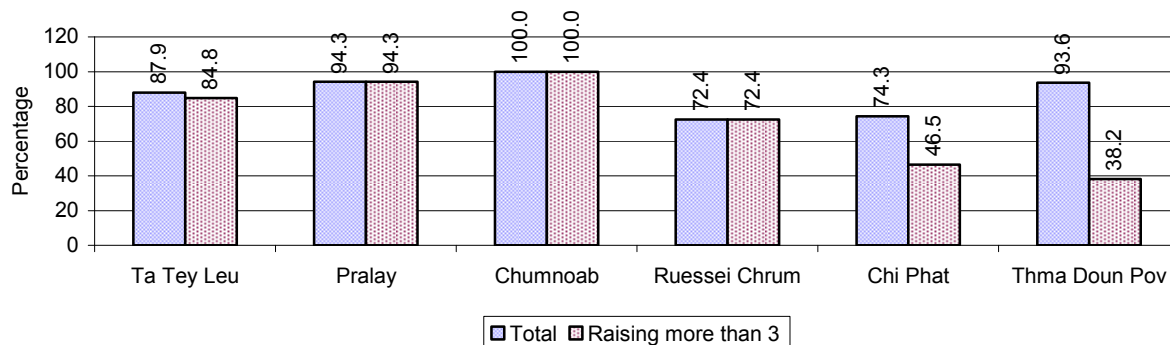
Note: Calculated against the total number of families

2.5.29 Percentage Families raising Pigs, by Commune, in 2008



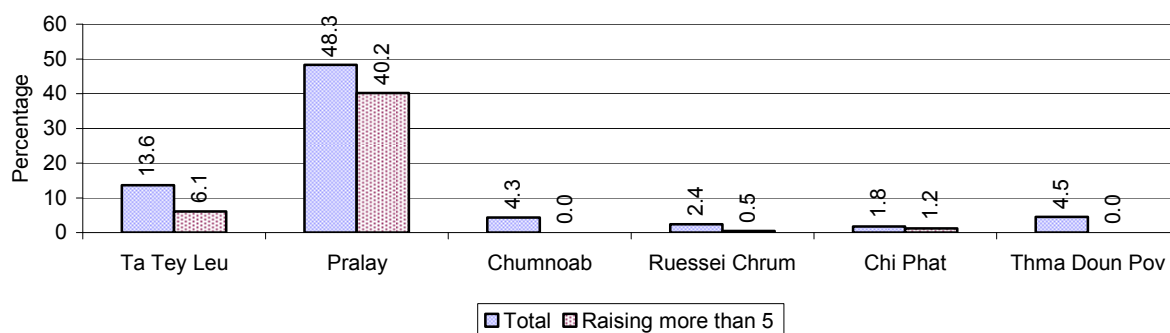
Note: Calculated against the total number of families in the commune

2.5.30 Percentage Families raising Chickens, by Commune, in 2008



Note: Calculated against the total number of families in the commune

2.5.31 Percentage Families raising Ducks, by Commune, in 2008



Note: Calculated against the total number of families in the commune

2.5.32 Percentage Families raising Horses, Goats or Sheep, by Commune, in 2008

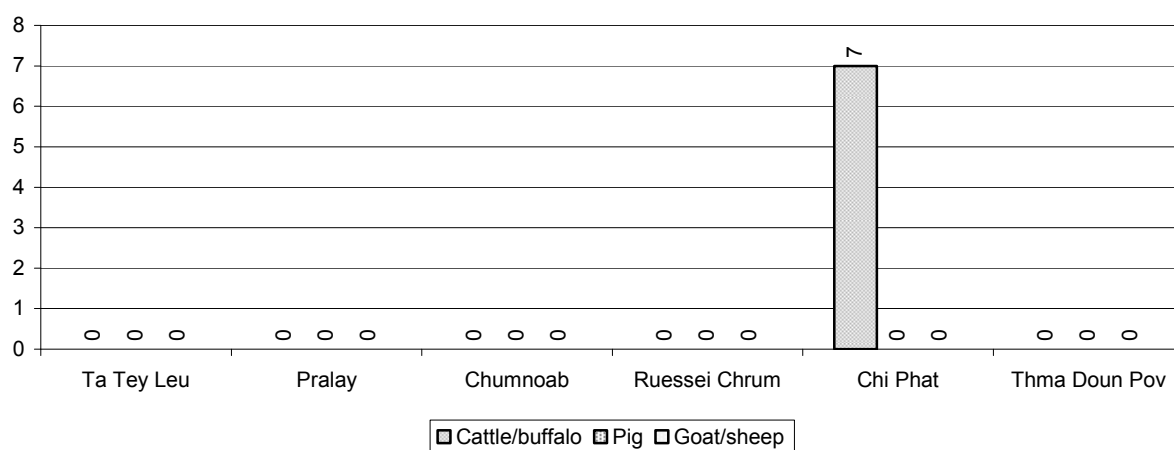
No families were raising this type of livestock in this District in 2008

Note: Calculated against the total number of families in the commune

2.5.33 Livestock Farms over 3 years

Description	2006	2007	2008
Number of cattle/buffalo farms	8 farm(s)	11 farm(s)	7 farm(s)
Number of pig farms	1 farm(s)	0 farm(s)	0 farm(s)
Number of goat/sheep farms	0 farm(s)	0 farm(s)	0 farm(s)
Number of chicken farms	0 farm(s)	0 farm(s)	0 farm(s)
Number of duck farms	0 farm(s)	0 farm(s)	1 farm(s)

2.5.34 Number Livestock Farms, by Commune in 2008



Note: Number of farms are recorded by the village chief, not by counting number of livestock in each farm

2.5.35 Number Chicken and Duck Farms, by Commune, for 2008



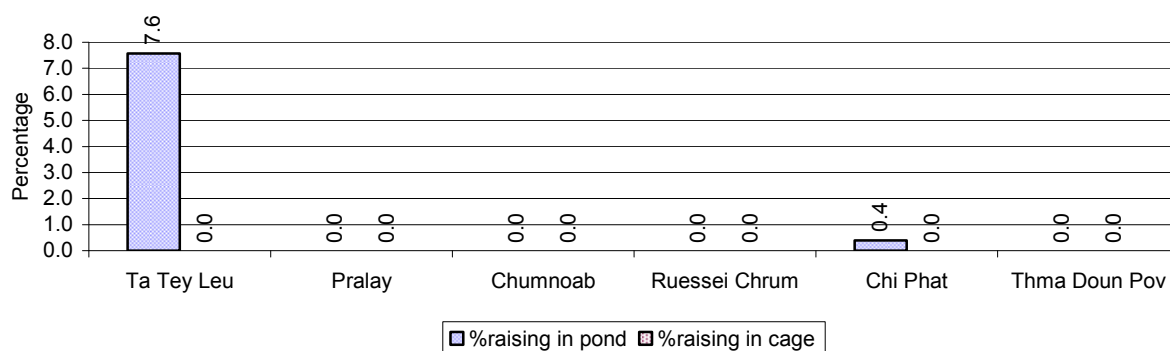
Note: Number of farm places recorded by village chief, not by counting number of livestock in each farm

2.5.36 Families raising Fish over 3 years

Description	2006	2007	2008
Total number of families raising fish	0 families	0 families	12 families
% families raising fish	0%	0%	1%
Number families raising fish in pond	0 families	0 families	12 families
% families raising fish in pond	0%	0 %	1%
Number fish pond	0 pond(s)	0 pond(s)	12 pond(s)
No. of ponds per family	- pond/families	- pond/families	1.0 pond/families
Number of families raising fish in cage	0 families	0 families	0 families
%families raising fish in cage	0 %	0 %	0%
Number of fish cage	0 cage(s)	0 cage(s)	0 cage(s)
No. of fish cage per family	- cage /families	- cage /families	- cage /families

Note: % of families raising fish or fish in ponds or cages is calculated a percentage of the total number of families.

2.5.37 Percentage of Families raising Fish, by Commune, in 2008



Note: Calculated as a percentage of the total number of families in the commune.

2.5.38 Shrimp and Prawn Farming over 3 years

Description	2006	2007	2008
Number of families raising shrimps	0 families	0 families	0 families
% Families raising shrimps	0%	0%	0%
Number of shrimp ponds	0 pond	0 pond	0 pond
Total area raising shrimps	0 ha	0 ha	0 ha
Area per family	-ha/families	-ha/families	-ha/families
Number of families raising prawns	0 families	0 families	0 families
% families raising prawns	0%	0%	0%
Number prawn ponds	0 pond	0 pond	0 pond
Ponds per families	- pond/families	-pond/families	-pond/families
Number of prawn cages	0 cage	0 cage	0 cage
Cages per families	0 cage /families	0 cage /families	0 cage /families

Note: Percentage of families raising either prawns or shrimp is calculated against the number of families, who do aquaculture farming, NOT the total population.

2.5.39 Numbers of Families raising Shrimps and number of Shrimp Ponds, by Commune, in 2008

There were none of these in this District in 2008

2.5.40 Number of Families raising Prawn and Number of Prawn Ponds/Cages, by Commune, in 2008

There were none of these in this District in 2008

3 Social Aspects

3.1 Education

3.1.1 Kindergarten in the District over 3 years

Description	2006	2007	2008
Number of community kindergarten schools	0 school(s)	3 school(s)	3 school(s)
Number of community kindergarten class rooms	0 room(s)	3 room(s)	3 room(s)
Number of community kindergarten classes	0 class(es)	3 class(es)	3 class(es)
Number of community kindergarten teachers	0 person(s)	3 person(s)	3 person(s)
Number of women community kindergarten teachers	0 women	0 women	0 women
Number of state and private kindergarten schools	3 school(s)	3 school(s)	3 school(s)
Number of state and private kindergarten class rooms	3 room(s)	3 room(s)	4 room(s)
Number of state and private kindergarten classes	6 class(es)	3 class(es)	4 class(es)
Number of state and private kindergarten teachers	6 person(s)	2 person(s)	5 person(s)
Number of women state and private kindergarten teachers	3 women	0 women	1 women

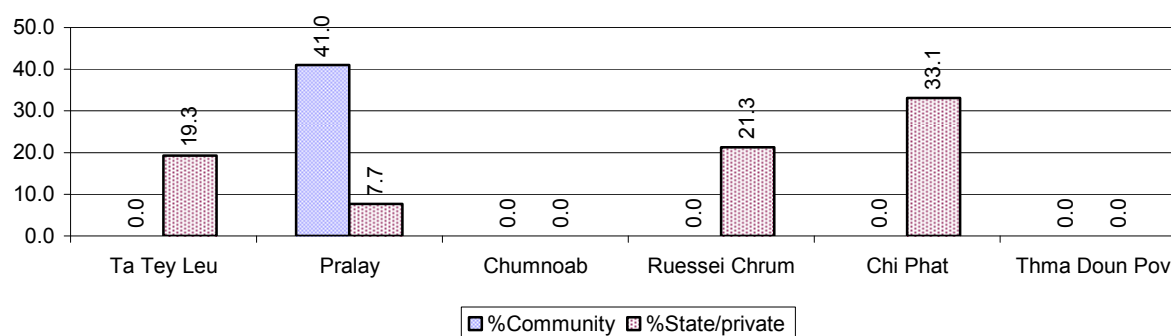
3.1.2 Percentage enrolment at Kindergarten level over 3 years

This table shows the percentage of the total 3-5 year old population attending kindergarten.

Description	2006 %	2007 %	2008	
			%	Number
Total percentage of children, 3-5 yrs, go to kindergarten	20%	37%	27%	135 person(s)
Percentage of children, 3-5 yrs, go community kindergarten	0%	6%	3%	16 person(s)
Percentage children, 3-5 yrs, go state/private kindergarten	20%	31%	23%	119 person(s)

Note: Calculated against the total for that age group

3.1.3 Percentage of Children 3-5 yrs attending Kindergarten, by Commune, in 2008



3.1.4 Basic Education over 3 years

Primary School

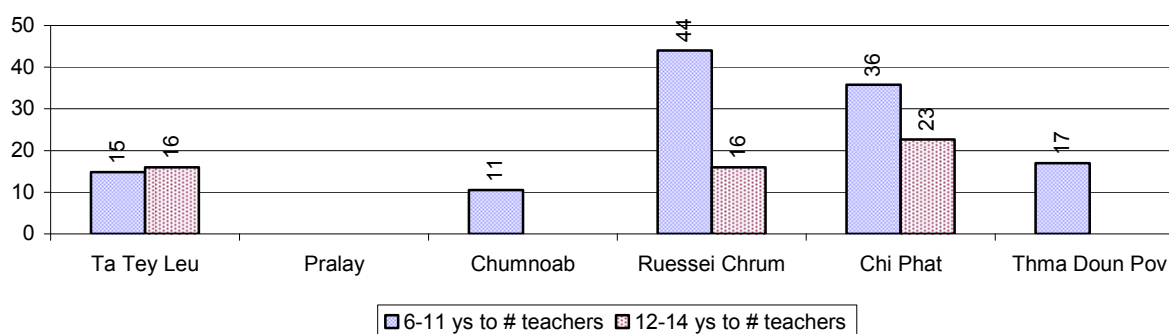
Description	2006	2007	2008
Number of primary schools	5 school(s)	8 school(s)	6 school(s)
Number of primary school rooms	15 room(s)	23 room(s)	26 room(s)
Number of primary classes	25 class(es)	34 class(es)	34 class(es)
Number of primary teachers	15 person(s)	20 person(s)	25 person(s)
Ratio of children 6-11 yrs to school	139	101	123
Ratio of children 6-11 yrs to school room	46	35	28
Ratio of children 6-11 yrs to class	28	24	22
Ratio of children 6-11 yrs to teacher	46	40	30

Note: According to education norm, children 6-11 yrs should attend primary school, while 12-14 yrs should be in lower secondary school, but in reality this varies.

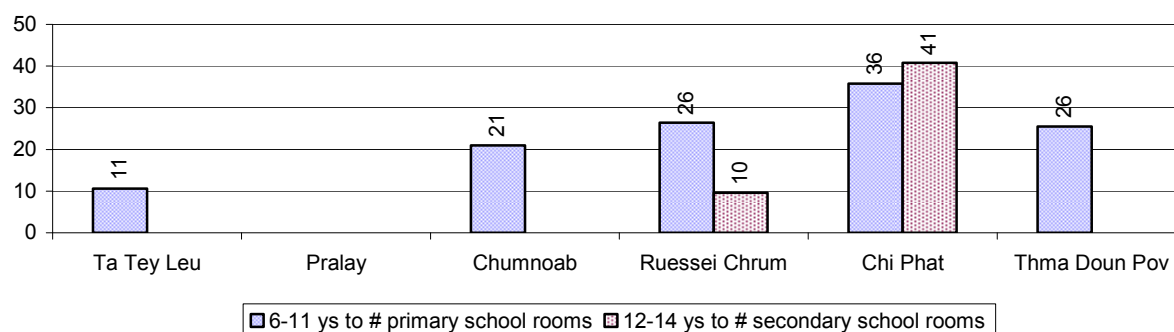
Lower Secondary School

Description	2006	2007	2008
Number of lower secondary schools	1 school(s)	1 school(s)	2 school(s)
Number of lower secondary school rooms	5 room(s)	5 room(s)	10 room(s)
Number of lower secondary classes	5 class(es)	3 class(es)	4 class(es)
Number of lower secondary teachers	5 person(s)	7 person(s)	13 person(s)
Ratio children 12-14 yrs to school	321	347	175
Ratio of children 12-14 yrs to school room	64	69	35
Ratio of children 12-14 yrs to class	64	116	88
Ratio of children 12-14 yrs to teacher	64	50	27

3.1.5 Ratio of 6-11 year old and 12-14 year old Children to number of Teachers, by Commune, in 2008



3.1.6 Ratio of 6-11 year old and 12-14 year old Children to number of School Rooms, by Commune, in 2008



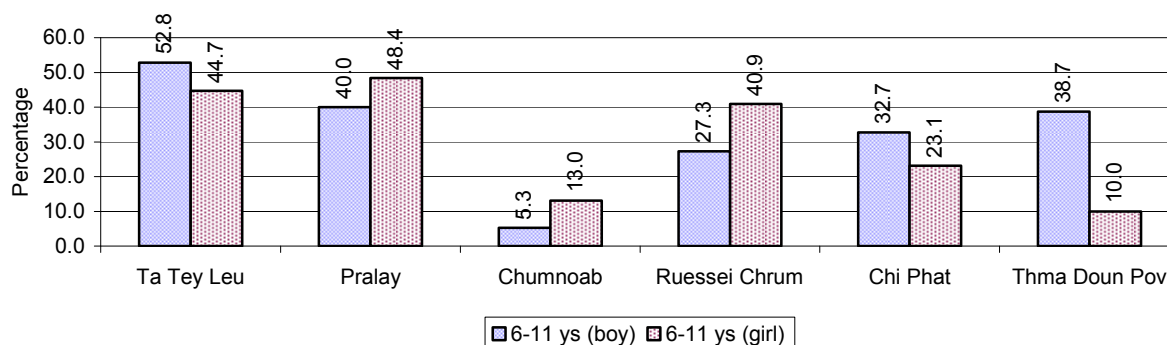
3.1.7 Enrolment status at Primary Level over 3 years

Description	2006 %	2007 %	2008	
			%	Number
Total children aged 6-11 years old	15%	16%	15%	738 person(s)
Total children aged 6-11 who are in school	64%	73%	69%	506 person(s)
Total children aged 6-11 who are not in school	36%	27%	31%	232 person(s)
Total girls aged 6-11 years old	14%	15%	15%	377 person(s)
Total girls aged 6-11 who are in school	62%	76%	71%	267 person(s)
Total girls aged 6-11 who are not in school	38%	24%	29%	110 person(s)
Total boys aged 6-11 years old	16%	17%	15%	361 person(s)
Total boys aged 6-11 who are in school	66%	71%	66%	239 person(s)
Total boys aged 6-11 who are not in school	34%	29%	34%	122 person(s)

Note 1: Percentage is calculated on the basis of the total number of children within 6-11 year age group for the first 3 rows and for the total girls and the total boys aged 6-11 yrs.

Note 2: Number of girls aged 6-11 who are in & not in school is calculated against the total number of girls aged 6-11 yrs. Number boys, 6-11 yrs who are in & not in school are calculated against the total number of boys aged 6-11 yrs.

3.1.8 Percentage of 6-11 year old Children not in School, by Commune, in 2008



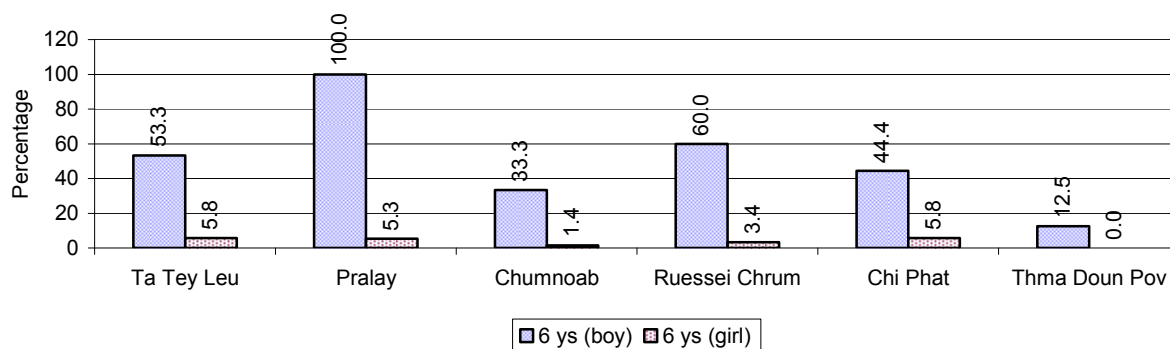
Note: calculated on the basis of the total number of children within 6-11 year age group in the commune.

3.1.9 Enrolment of 6 year old Children over 3 years

Description	2006 %	2007 %	2008	
			%	Number
Total % and number of children aged 6 years old	4%	5%	4%	213 person(s)
Total % of children aged 6 years old in school	66%	70%	52%	110 person(s)
Total % of children aged 6 years old not in school	34%	30%	48%	103 person(s)

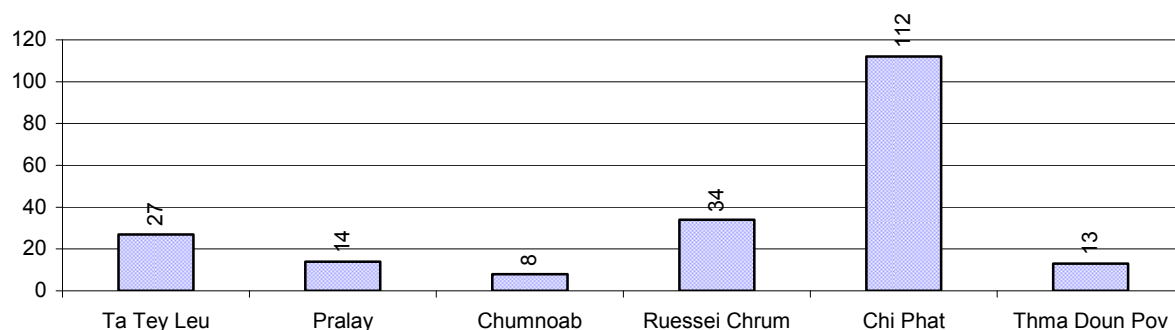
Note: First row calculated as a percentage of total population. Second and third row calculated as a percentage of the total number of 6 year olds.

3.1.10 Percentage of 6 year old Children not in School, by Commune, in 2008



Note: Calculated as a percentage of total 6 year old population

3.1.11 Number of 5 year old Children in each Commune in 2008

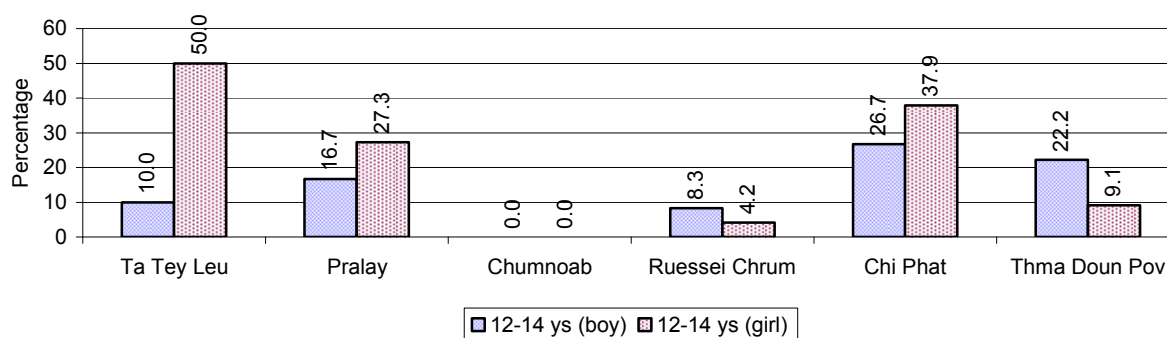


3.1.12 Enrolment at Lower Secondary Level over 3 years

Description	2006 %	2007 %	2008	
			%	Number
Total children aged 12-14 years old	7%	7%	7%	350 person(s)
Children aged 12-14 years old in school	64%	78%	75%	264 person(s)
Children aged 12-14 years old not in school	36%	22%	25%	86 person(s)
Total girls aged 12-14 years old	7%	7%	7%	179 person(s)
Girls aged 12-14 years old in school	69%	76%	72%	129 person(s)
Girls aged 12-14 years old not in school	31%	24%	28%	50 person(s)
Total boys aged 12-14 years old	7%	7%	7%	171 person(s)
Boys aged 12-14 years old in school	59%	79%	79%	135 person(s)
Boys aged 12-14 years old not in school	41%	21%	21%	36 person(s)

Note: Percentage is calculated on the basis of number of the total number of children within 12-14 yrs group, except for the first row of each section which is calculated on the basis of the total population.

3.1.13 Percentage of 12-14 year olds not in School, by Commune, in 2008



Note: Calculated as a percentage of the total 12-14 year old population in each commune

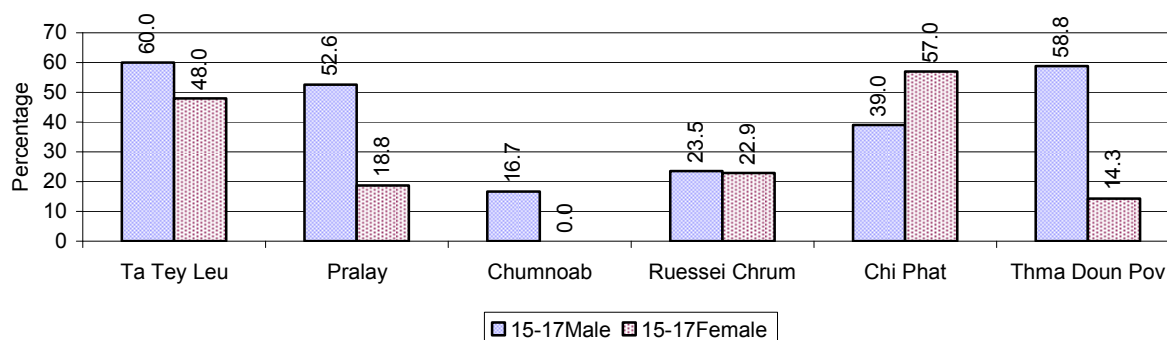
3.1.14 Upper Secondary Schools over 3 years

Description	2006	2007	2008
Number of upper secondary schools	0 school(s)	0 school(s)	0 school(s)
Number of upper secondary school rooms	0 room(s)	0 room(s)	0 room(s)
Number of upper secondary classes	0 class(es)	0 class(es)	0 class(es)
Number of upper secondary teachers	0 person(s)	0 person(s)	0 person(s)
Ratio of 15-17 yr olds to number of school	N/A	N/A	N/A
Ratio of 15-17 yr olds to number of school room	N/A	N/A	N/A
Ratio of 15-17 yr olds to number of classes	N/A	N/A	N/A
Ratio of 15-17 yr olds to number of teacher	N/A	N/A	N/A

3.1.15 Enrolment of 15-17 year old teenagers over 3 years

Description	2006	2007	2008
Number of teenage, 15-17 years old	384 person(s)	444 person(s)	397 person(s)
Number of teenage, 15-17 years old, who are not studying	244 person(s)	216 person(s)	167 person(s)
Percentage of teenage, 15-17 years old not studying	64%	49%	42%

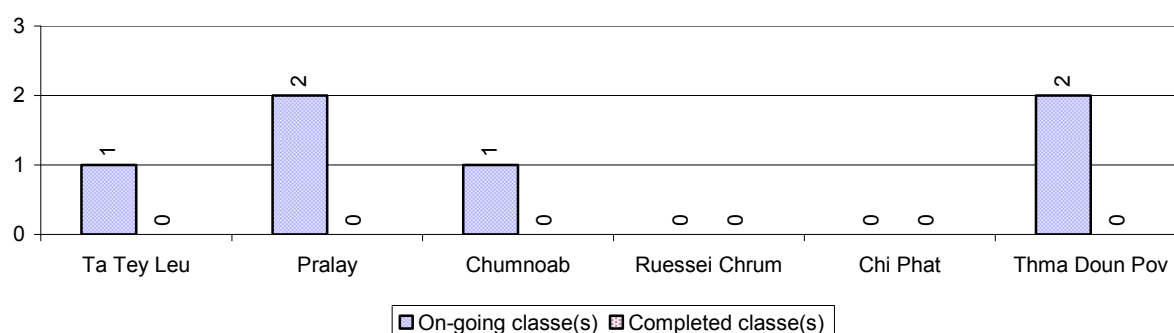
3.1.16 Percentage of 15-17 year old Teenagers not at School, by Commune, in 2008



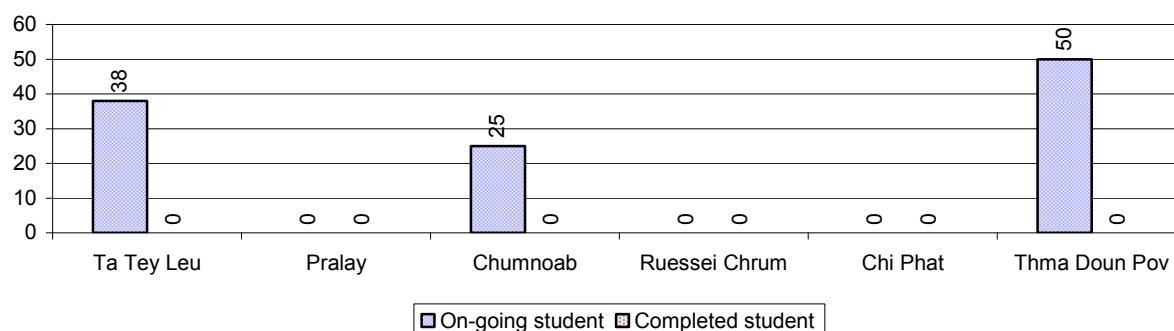
3.1.17 Literacy Classes as of 2008

Literacy classes	Organized by:		Other Program(s)	Total
	PDoEYS	NGOs		
Number of On-going literacy classes	6 class(es)	0 class(es)	0 class(es)	6 class(es)
Number of literacy students in on-going classes	113 person(s)	0 person(s)	0 person(s)	113 person(s)
Completed literacy class(es)	0 classes	0 classes	0 classes	0 classes
Number of literacy students that have completed literacy classes	0 person(s)	0 person(s)	0 person(s)	0 person(s)
Number of students that passed	0 person(s)	0 person(s)	0 person(s)	0 person(s)

3.1.18 Number of on-going and completed Literacy Classes, by Commune, in 2008



3.1.19 Students of on-going & completed Literacy Classes, by Commune, in 2008

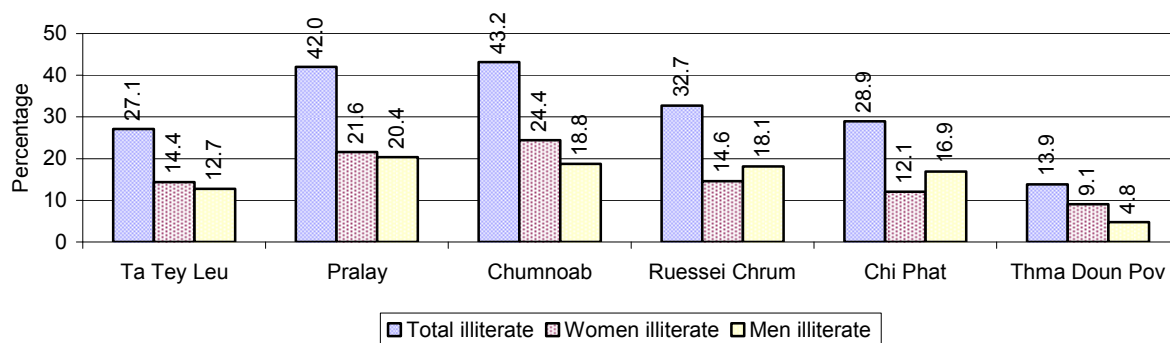


3.1.20 Percentage of illiterate People between 15-60, over 3 years

Illiteracy Status	2006 %	2007 %	2008	
			%	Number
Illiterate people, 15-60 years old	27%	27%	31%	817 person(s)
Illiterate females, 15-60 years old	15%	16%	15%	387 person(s)
Illiterate people, 15-17 years old	16%	17%	22%	88 person(s)
Illiterate females, 15-17 years old	9%	10%	11%	44 person(s)
Illiterate people, 18-24 years old	24%	23%	25%	158 person(s)
Illiterate females, 18-24 years old	15%	17%	10%	66 person(s)
Illiterate people, 25-60 years old	30%	31%	35%	571 person(s)
Illiterate females, 25-60 years old	17%	18%	17%	277 person(s)

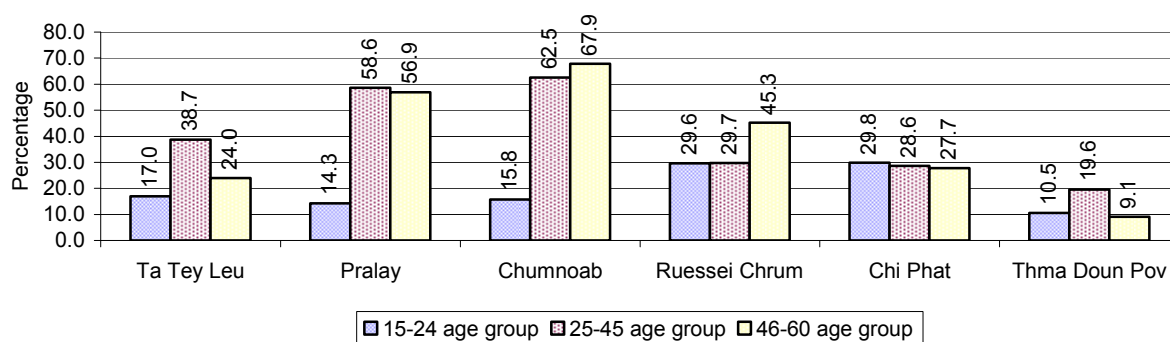
Note: Percentage is calculated on the basis of number of people in age each group.

3.1.21 Percentage illiterate People among 15-60 yrs old, by Commune, in 2008



Note: Percentages are calculated on the basis of number of people in that age group.

3.1.22 Percentage illiterate People for 15-24 yrs, 25-45 yrs and 46-60 yrs, by Commune, in 2008



Note: Percentage of illiterate people in each age group is calculated on the basis of number of people in that age group.

3.2 Health

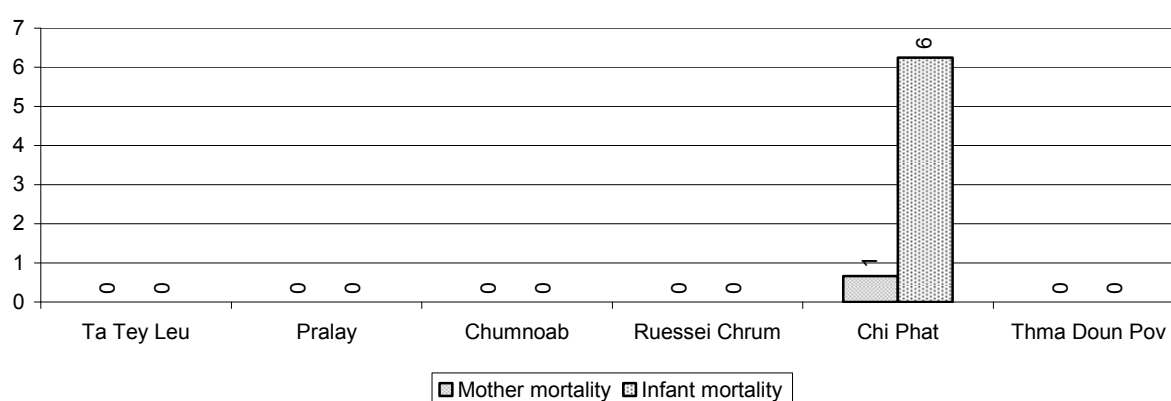
3.2.1 Health Situation of Women and Children, over 3 years

Description	2006	2007	2008
Number families with a birth during the year	108 families	127 families	159 families
Number of women who had their baby delivered by a TBA	76 person(s)	75 person(s)	72 person(s)
Percentage of women who had their baby delivered by a TBA	70 %	59 %	45 %
Number of women who had their baby delivered by a midwife	32 person(s)	52 person(s)	87 person(s)
Percentage of women had their baby delivered by a midwife	30 %	41 %	55 %
Number of mothers who died within 1 month of giving birth	1 person(s)	0 person(s)	2 person(s)
Mothers who died within 1 month of giving birth per 100,000 families having a delivery	926	0	1,258
Number of infants born during the year	144 person(s)	140 person(s)	159 person(s)
Number of Infants who died within 1 month	6 person(s)	24 person(s)	3 person(s)
Infants mortality within 1 month per 1,000 births	42	171	19

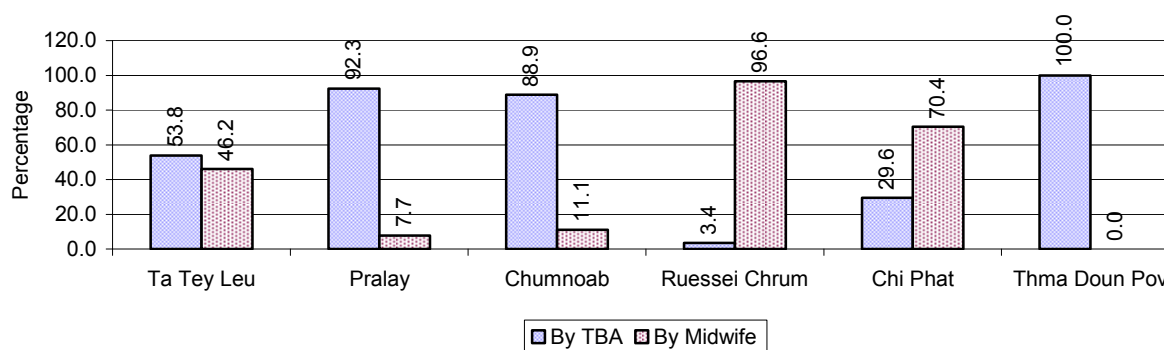
Description	2006	2007	2008
Number of children who died below the age of 5.	3 person(s)	6 person(s)	2 person(s)
Number of infants, aged 9-12 months, born during the year	120 person(s)	102 person(s)	120 person(s)
Nr. infants, aged 9-12 months, not receiving full immunization	47 person(s)	4 person(s)	1 person(s)
% of 9-12 months infants, not receiving full immunization	39 %	4 %	1 %

Note: TBA = Traditional Birth Attendant

3.2.2 Mothers dying within 0 days to 1 month of giving Birth and Infants dying within 1 month in 2008, by Commune

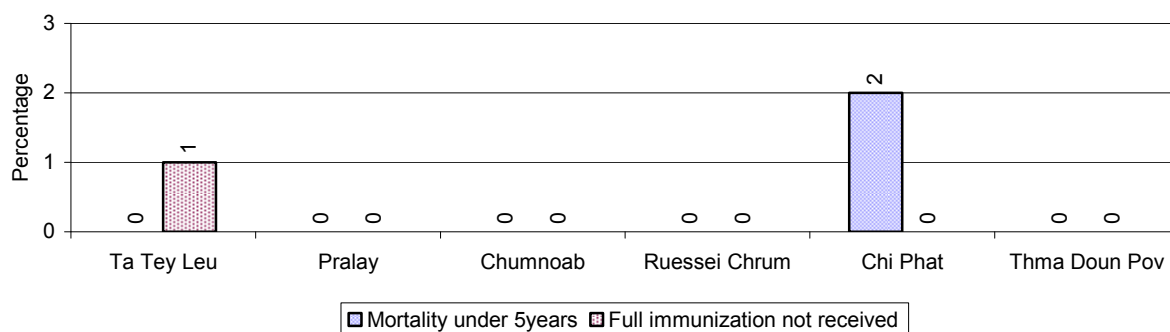


3.2.3 Percentage of Women delivering with a TBA or Midwife, by Commune



Note: Calculated as a percentage of total deliveries

3.2.4 Percentage of Children dying below 5 & of 9-12 months not receiving full Immunization, by Commune, in 2008



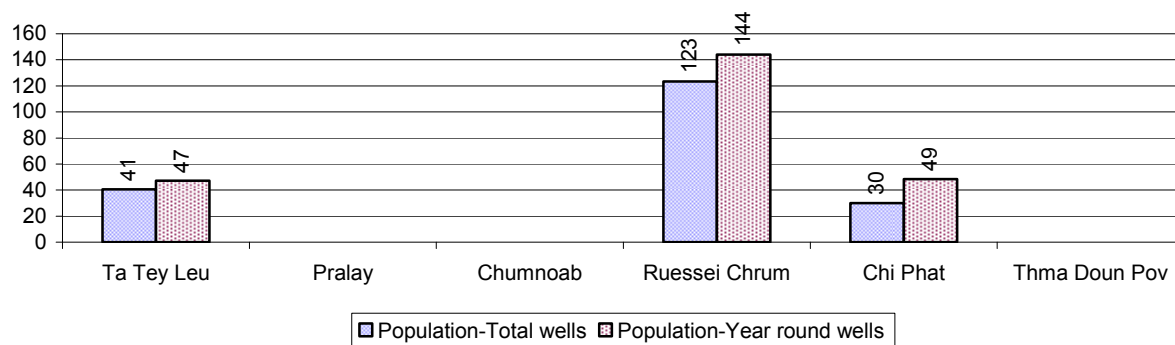
Note: Mortality rate calculated as a percentage of the total 5 year old population. Lack of immunization received calculated as a percentage of the total number 9-12 months olds there are

3.3 Water and Sanitation

3.3.1 Number of different types of Wells over 3 years

Type of wells	Number of wells by year		
	2006	2007	2008
<i>Total number of pumped or mixed wells</i>	72	89	95
Year-round usable pumped or mixed wells	62	70	63
Dry season unusable pump or mixed wells	10	19	32
Pump or mixed wells needing repair/rehabilitation	48	70	36
<i>Total number of ring wells</i>	12	8	2
Year-round usable ring wells	12	5	2
Dry season unusable ring wells	0	3	0
Ring wells needing repair/rehabilitation	2	11	0
<i>Total number of unprotected dug wells</i>	180	214	209
Year-round usable unprotected dug wells	132	158	171
Dry season unusable unprotected dug wells	48	56	38

3.3.2 Ratio of People to Wells, by Commune, in 2008



Note: Year-round wells excluding unprotected wells

3.3.3 Potable Ponds over 3 years

Type of Pond	2006	2007	2008
Total number of normal-type ponds	20 pond	9 pond	0 pond
Year-round usable normal-type ponds	10 pond	0 pond	0 pond
Dry season unusable normal-type ponds	10 pond	9 pond	0 pond
Normal-type ponds needing repair/rehabilitation	1 pond	0 pond	6 pond
Total number of filter ponds	2 pond	0 pond	0 pond
Year-round usable filter ponds	1 pond	0 pond	0 pond
Filter ponds, dry season unusable	1 pond	0 pond	0 pond
Filter ponds needing repair/rehabilitate	2 pond	0 pond	0 pond

3.3.4 Ratio of People to normal Ponds, by Commune in 2008

There were no normal ponds in this District in 2008

3.3.5 Ratio of People to Filter Ponds, by Commune, in 2008

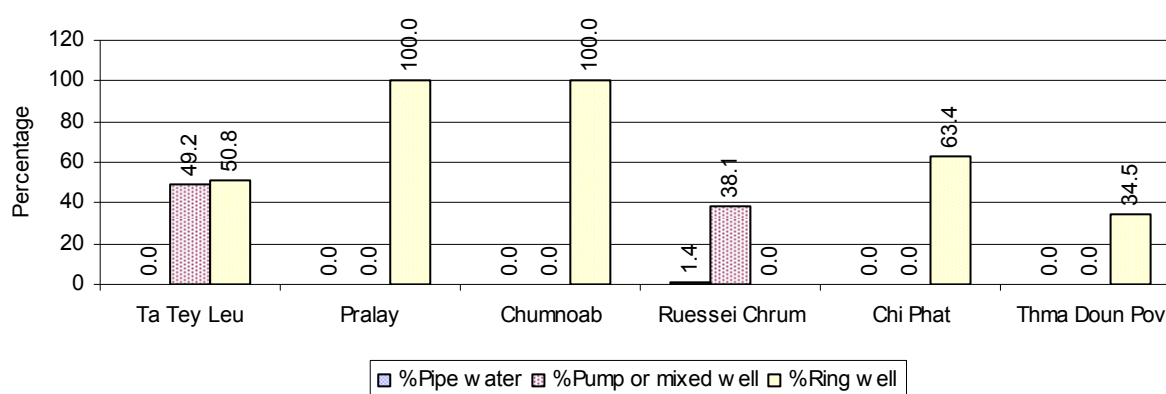
There were no filter ponds in this District in 2008

3.3.6 Source of potable Water for Households, over 3 years

Water sources	2006	2007	2008	
	%	%	%	Number
Families using water from purification system	0%	0 %	0 %	3 families
Families using water from pump, mixed wells	24%	18 %	12 %	145 families
Families using water from ring wells and open dug wells	22%	43 %	56 %	668 families
Families using water from pond	0%	1 %	0 %	0 families
Families using water from rain water storage	0%	0 %	3 %	30 families
Families using water from rivers, lakes, natural ponds and reservoirs	54%	38 %	30 %	354 families

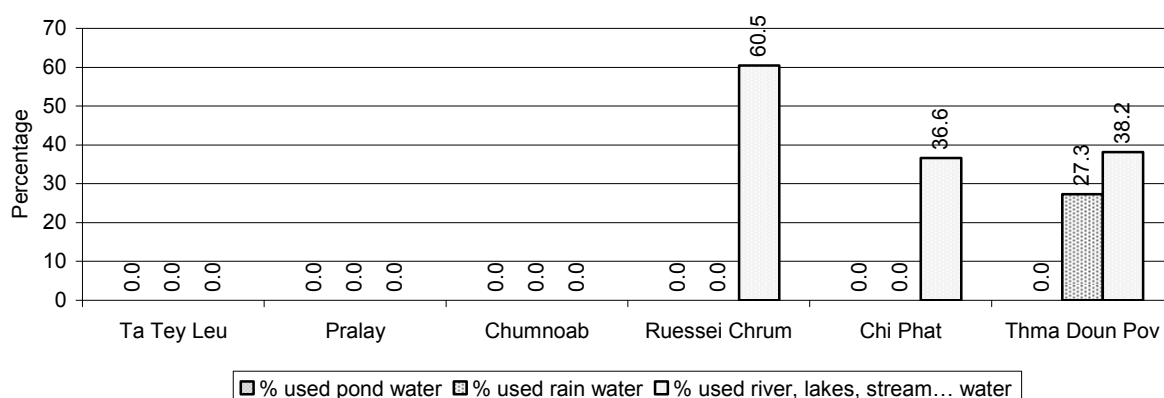
Note: Calculated as a percentage of the total number of families.

3.3.7 Percentage Families using different Water Sources, by Commune, in 2008



Note: Calculated as a percentage of the total number of families in each commune

3.3.8 Percentage Families using Water from Rain Water Storage, Ponds and natural Sources (rivers/lakes/natural ponds/reservoirs), by Commune, 2008



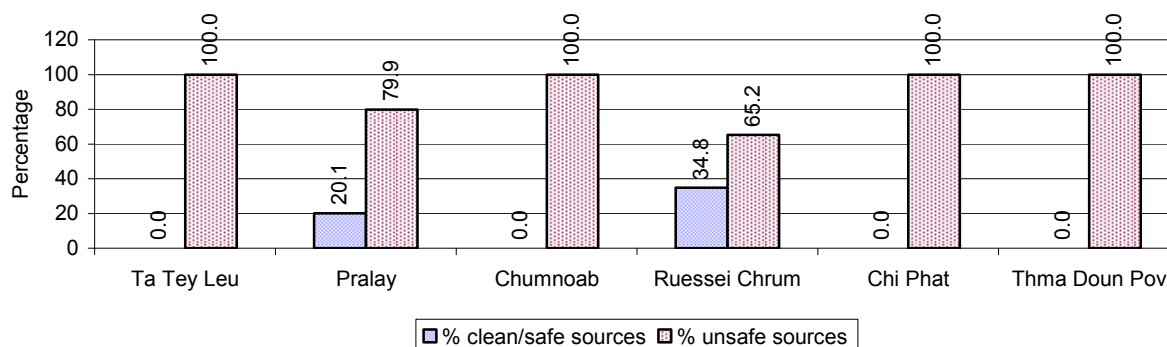
Note: Calculated as a percentage of the total number of families in each commune

3.3.9 Drinking Water Sources in the dry Season over 3 years

Percentage Families that get drinking water from:	2006	2007	2008	
	%	%	%	Number
from clean/safe sources	11 %	25 %	9 %	108 families
from unsafe sources	89 %	75 %	91 %	1,092 families

Note: Calculated as a percentage of the total number of families.

3.3.10 Percentage Families using safe and unsafe Water Sources in the dry Season, by Commune, in 2008



Note: Calculated as a percentage of the total number of families in each commune.

3.3.11 Drinking Water Purification by Households, over 3 years

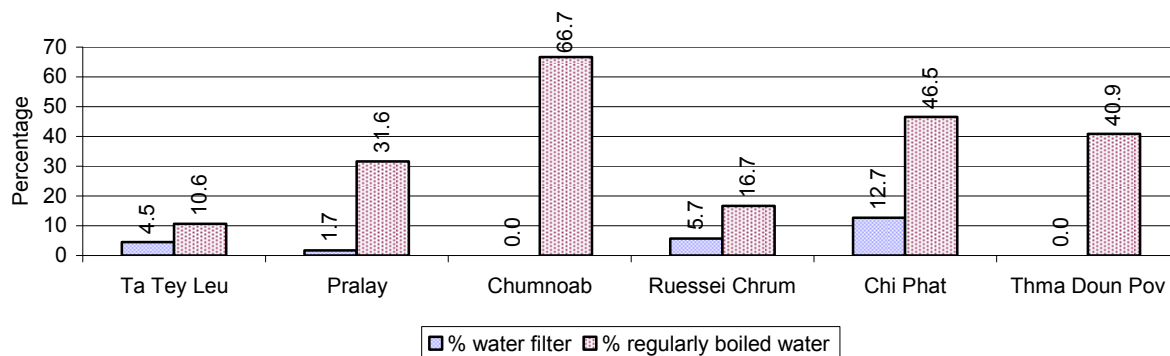
This table shows the different ways families make water safe for drinking.

Families, who:	2006	2007	2008	
	%	%	%	Number
Filter water for drinking	4%	6%	7 %	85 families
Boil water for drinking	35%	41%	36 %	430 families

Note: Calculated as a percentage of the total number of families

3.3.12 Percentage Families filtering Water or regularly boiling Water, by Commune, in 2008

This graph shows the different ways families make drinking water safe.



Note: Calculated on as a percentage of the total number of families in each commune.

3.3.13 Families' access to Water, over 3 years

Families access to water	2006 %	2007 %	2008	
			%	Number
Families with water at home or in less then 150m	5%	4%	4 %	50 families
Families with water 150m or more away from home	16%	16%	17 %	207 families

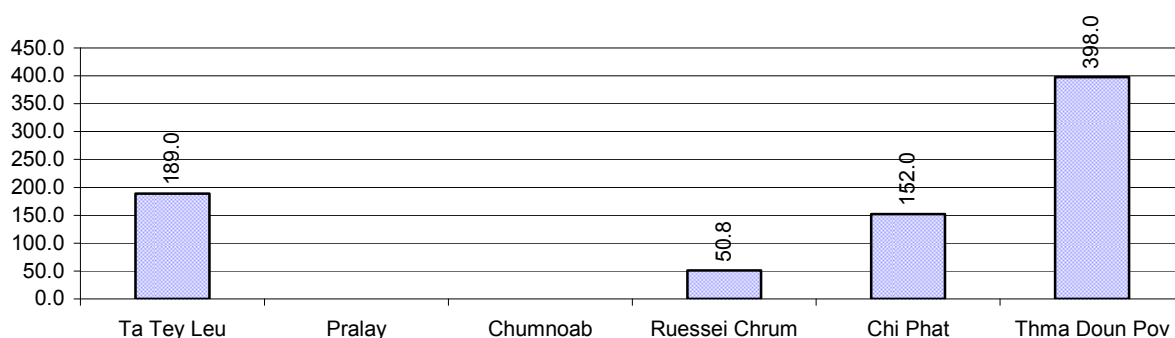
Note: Calculated as a percentage of the total number of families

3.3.14 Ratio of people to Latrines over 3 years

Description	2006 Ratio	2007 Ratio	2008	
			Ratio	Number
Ratio of people to latrines	272.1	210.9	139.2	36.0

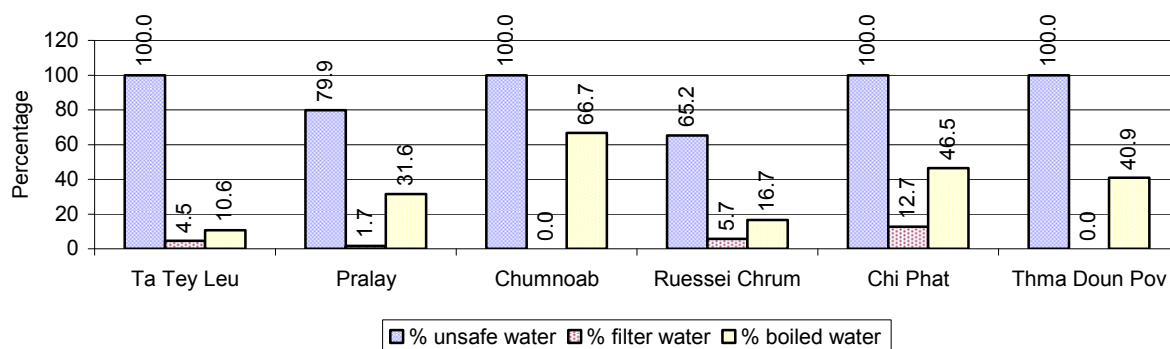
Note: Ratio calculated by dividing the number of houses with latrines by the total population

3.3.15 Ratio of People to Latrines, by Commune, in 2008



Note: Ratio calculated by dividing the number of houses with latrines by the total population in a Commune.

3.3.16 Percentage of Families drinking boiled, filtered or unsafe Water, by Commune, in 2008



Note: Calculated as a percentage of the total number of families in each commune.

3.4 Vulnerable groups

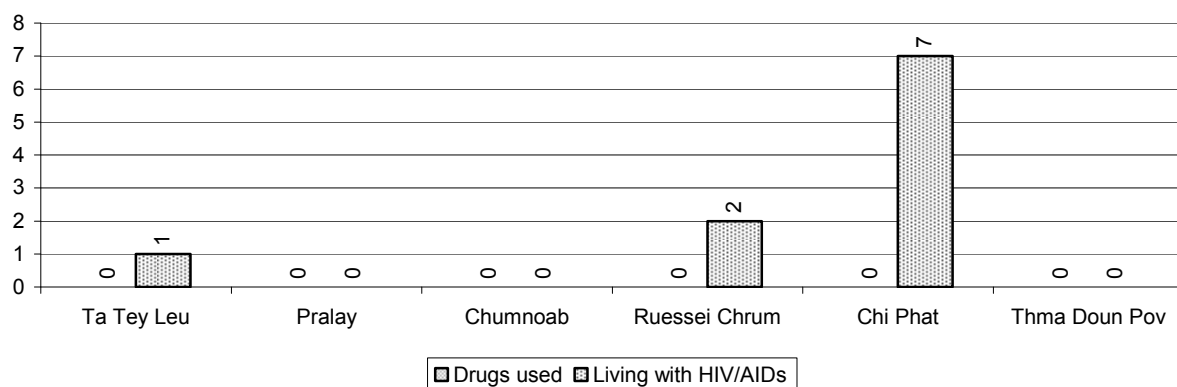
3.4.1 Vulnerable Groups in need of special Protection over 3 years

Vulnerable groups	2006	2007	2008
Victims of sexual abuse	0 person(s)	1 person(s)	0 person(s)
Victims of human trafficking	0 person(s)	0 person(s)	0 person(s)
Families with family member(s) using drugs	0 families	0 families	0 families
Families with family member(s) living with HIV/AIDS	5 families	9 families	10 families
Children under 18 yrs old whose parent died of AIDS	21 person(s)	42 person(s)	13 person(s)
Orphaned/abandoned children under 18 yrs old (all cases)	53 person(s)	184 person(s)	39 person(s)
Elderly persons without guardian	58 person(s)	45 person(s)	48 person(s)
Disabled people able to earn an income	2 person(s)	10 person(s)	10 person(s)
Disabled people unable to earn an income	8 person(s)	7 person(s)	0 person(s)
Disabled people under 18 yrs old	0 person(s)	0 person(s)	0 person(s)
Victims of natural disasters	191 families	166 families	107 families
Victims of land mines and unexploded weapons	3 person(s)	1 person(s)	2 person(s)

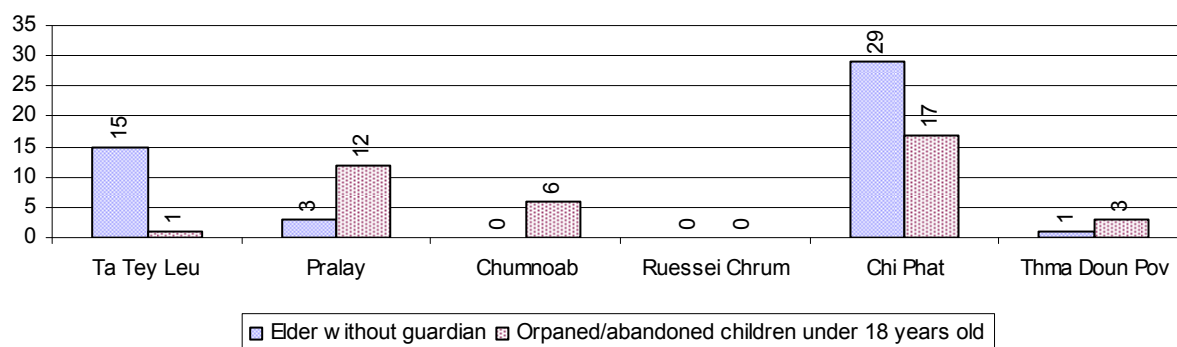
3.4.2 Registered Victims of sexual Abuse or Trafficking, by Commune, for 2008

There were no sexual abuse or trafficking in this District in 2008

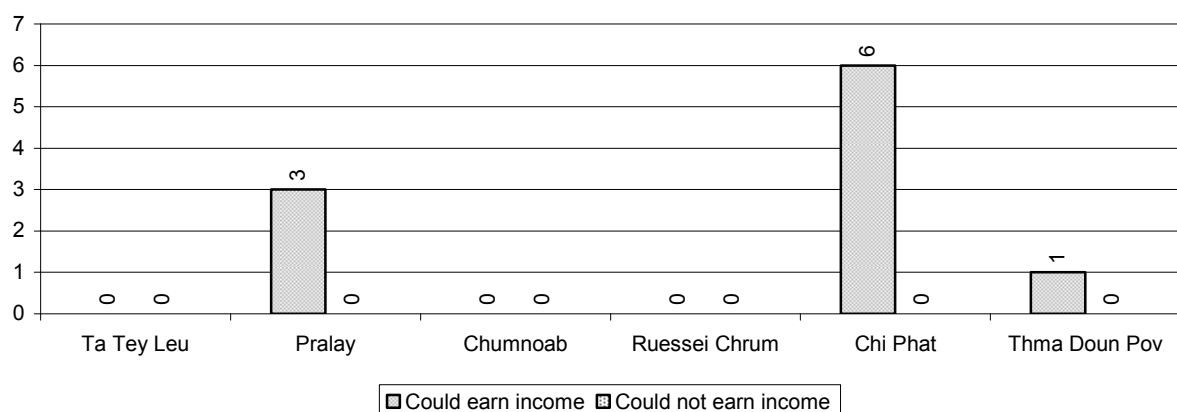
3.4.3 Registered Families with Member(s) using Drugs or living with HIV/AIDS, by Commune, for 2008



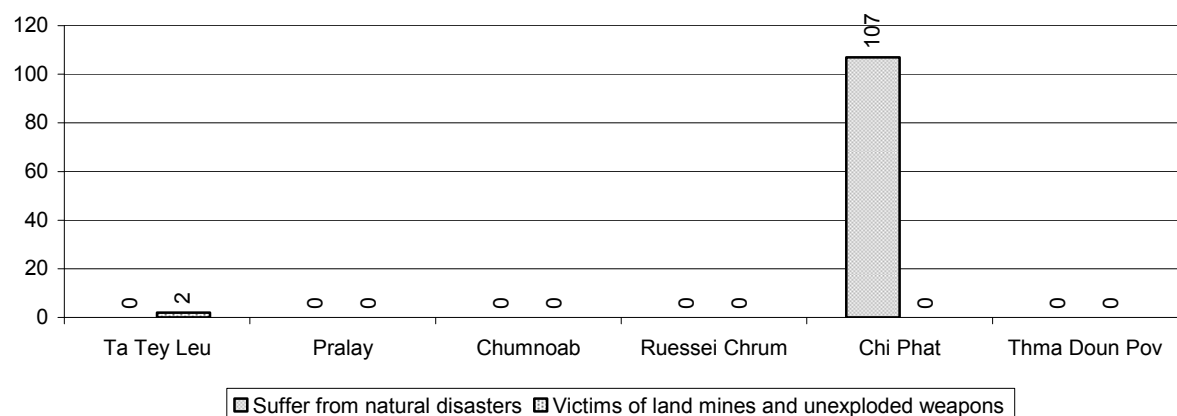
3.4.4 Elderly Persons without a Guardian and orphaned/abandoned Children under 18 years old, by Commune, for 2008



3.4.5 Number of disabled People who could or could not earn an Income, by Commune, for 2008



3.4.6 Number of Families who suffered from natural Disasters, and number of Victims of Land Mines and unexploded Weapons, by Commune, in 2008



3.5 Migration

3.5.1 Migration over 3 years

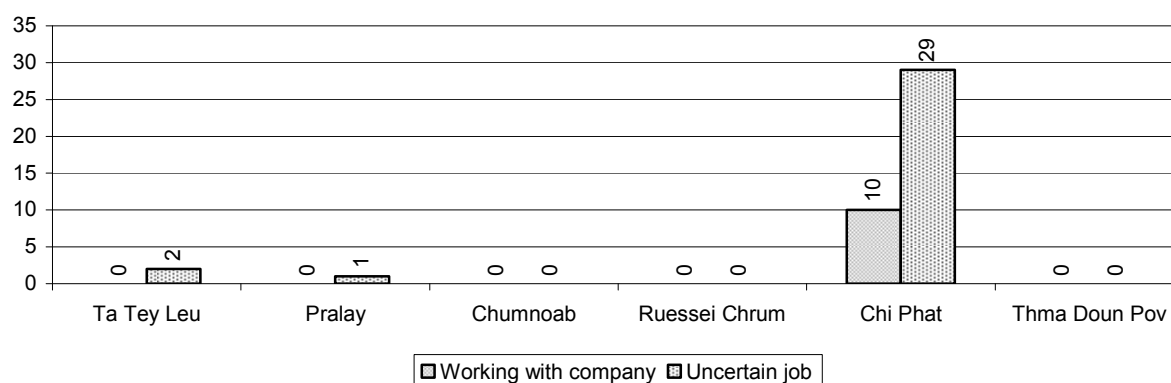
Description	2006	2007	2008
Number of families permanently in-migrated	28 families	18 families	22 families
Total number of people	111 person(s)	62 person(s)	71 person(s)
Total number of female	59 person(s)	17 person(s)	31 person(s)
Number of families permanently out-migrated	10 families	4 families	17 families
Total number of people	42 person(s)	49 person(s)	66 person(s)
Total number of female	20 person(s)	26 person(s)	36 person(s)
Number of families staying temporarily	17 families	28 families	14 families
Total number of people	61 person(s)	69 person(s)	41 person(s)
Total number of female	28 person(s)	35 person(s)	24 person(s)

3.5.2 Job Migration

Description	2006	2007	2008	
Number of people migrated to work with company/factory	0%	1%	0%	10 persons
Number of people migrated to work, but have uncertain jobs	0%	1%	1%	32 persons

Note: Calculated as a percentage of the total population of 18-60 year olds

3.5.3 Number of People working outside their home Villages in a Company/Factory or with an uncertain Job in 2008

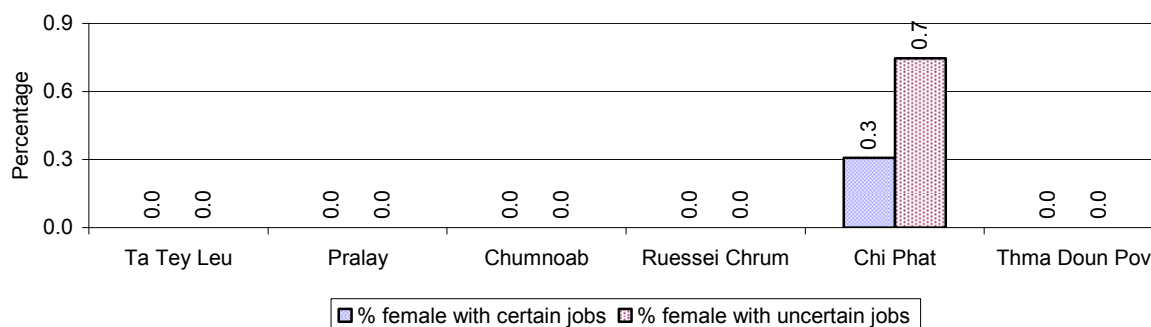


3.5.4 Female migration over 3 years

Description	2006 %	2007 %	2008	
			%	Number
Total number of migrants	0.2%	0.9%	0.8%	42 person(s)
Number of female migrants	0.1%	0.6%	0.5%	24 person(s)
Total number of migrants, who go to work with company/factory (with certain jobs)	0.1%	0.7%	0.2%	10 person(s)
Number of female migrants with certain jobs	0.1%	0.4%	0.1%	7 person(s)
Total number of migrants with uncertain jobs	0.0%	0.3%	0.6%	32 person(s)
Number of female migrants with uncertain jobs	0.0%	0.2%	0.3%	17 person(s)

Note: Calculated as a percentage of the total population

3.5.5 Percentage female Migrants with certain and uncertain Jobs, by Commune, in 2008



Note: Calculated as a percentage of the total population of the commune

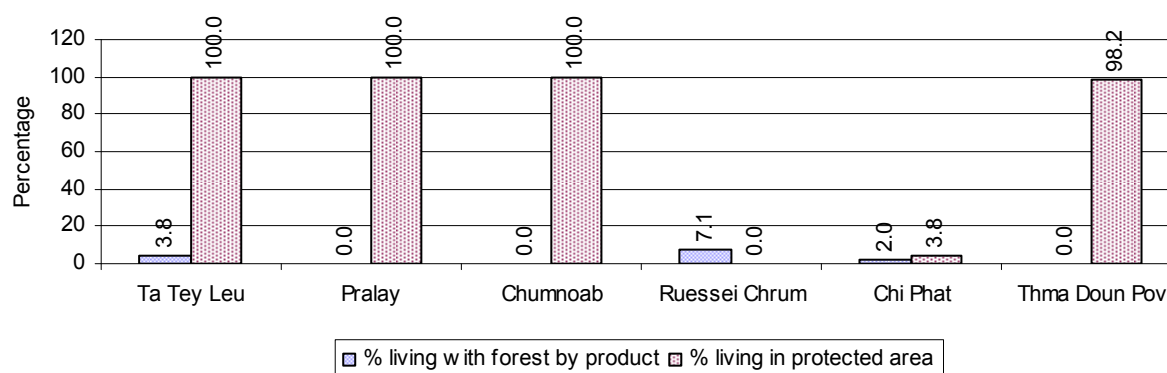
4 Natural Resources and Environment (NRE)

4.1 Families involved with NRE issues over 3 years

Description	2006 %	2007 %	2008	
			%	Number
Families living with forest by products	10 %	5 %	3 %	30 families
Families living in a protected area	52 %	48 %	42 %	502 families
Houses with access to garbage collection service	0 %	0 %	0 %	0 families
Families affected by environmental pollution	0 %	0 %	0 %	0 families
Families using chemical fertilizer	2 %	0 %	0 %	0 families
Families using chemical pesticide	5 %	2 %	1 %	16 families

Note: Calculated as a percentage of the total number of families

4.2 Percentage of Families involved with Natural Resource issues, by Commune, for 2008



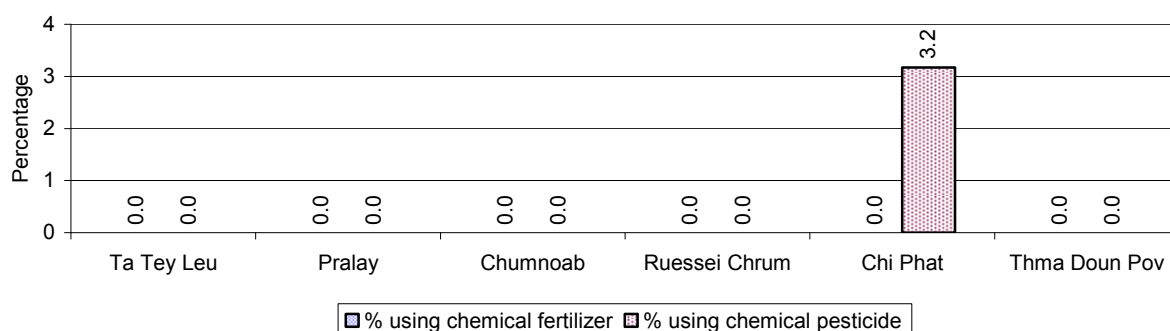
Note: Calculated as a percentage of the number of families in each commune

4.3 Percentage Houses with access to Garbage collection and Families affected by environmental Pollution, by Commune, for 2008

There were no houses with access to garbage collection and there were no families affected by environmental pollution in this District in 2008

Note: Garbage collection is calculated as a percentage of the total number of houses in each commune and families affected by environmental pollution is calculated as a percentage of the total number of families in each commune.

4.4 Percentage Families using chemical Fertilizer and chemical Pesticides, by Commune, for 2008



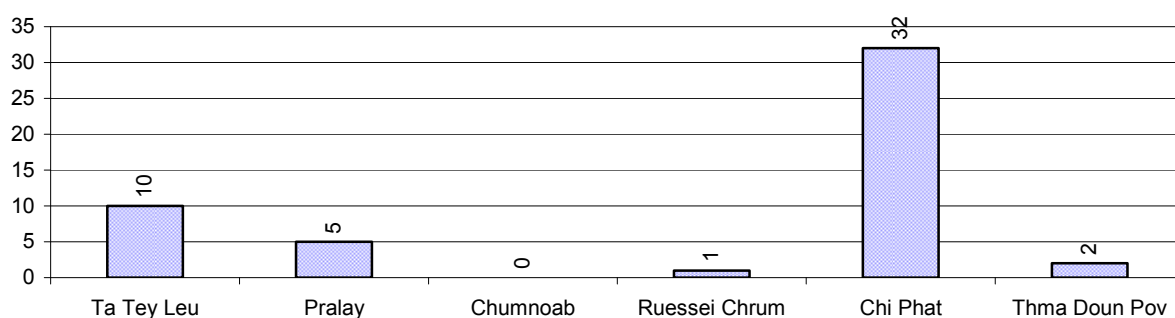
Note: Calculated as a percentage of the total number of families in each commune

5 Administration and Security

5.1 Birth Registration across 3 years

Description	2006	2007	2008
Number of infants to be registered	138 person(s)	116 person(s)	156 person(s)
Number of unregistered infants the year	88 person(s)	58 person(s)	50 person(s)
Percentage of infants unregistered	64 %	50 %	32 %

5.2 Number of unregistered Infants born in 2008, by Commune

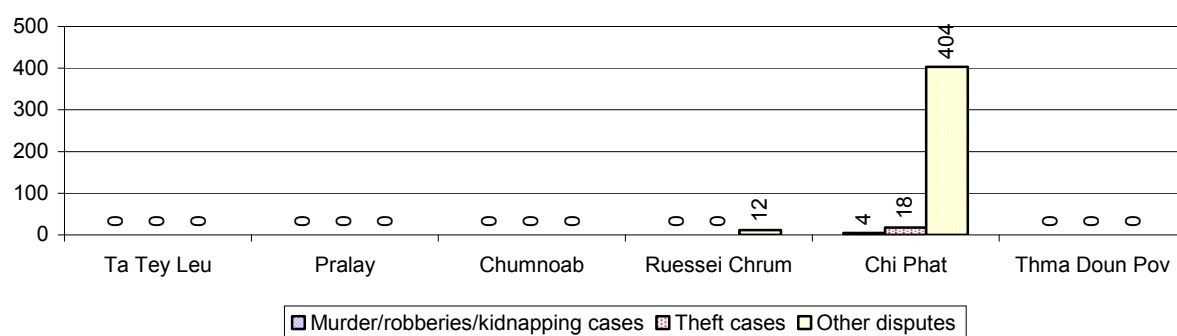


5.3 Registered criminal Cases over 3 years

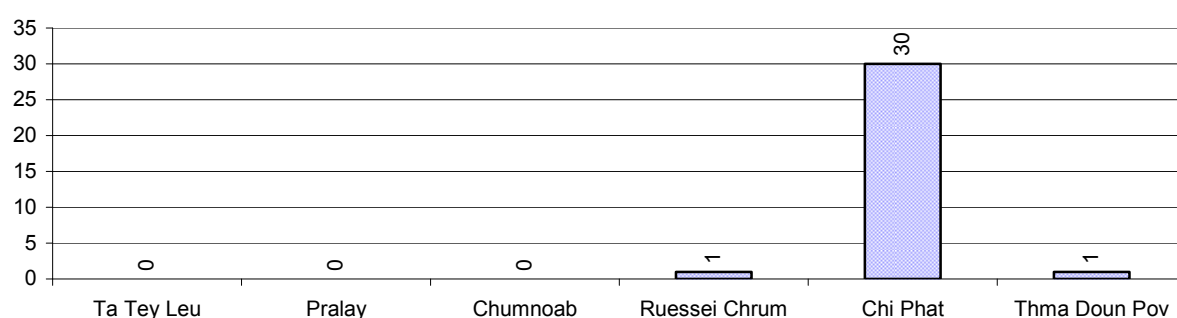
Description	2006	2007	2008
Murders, robberies and kidnapping cases	0 case(s)	0 case(s)	1 case(s)
Theft cases	8 case(s)	9 case(s)	4 case(s)
land dispute cases	37 case(s)	31 case(s)	32 case(s)
Other disputes cases	11 case(s)	36 case(s)	93 case(s)

Note: this reflects only registered criminal cases

5.4 Registered criminal Cases per 10,000 people, by Commune, for 2008



5.5 Number of registered Land Disputes, by Commune, in 2008

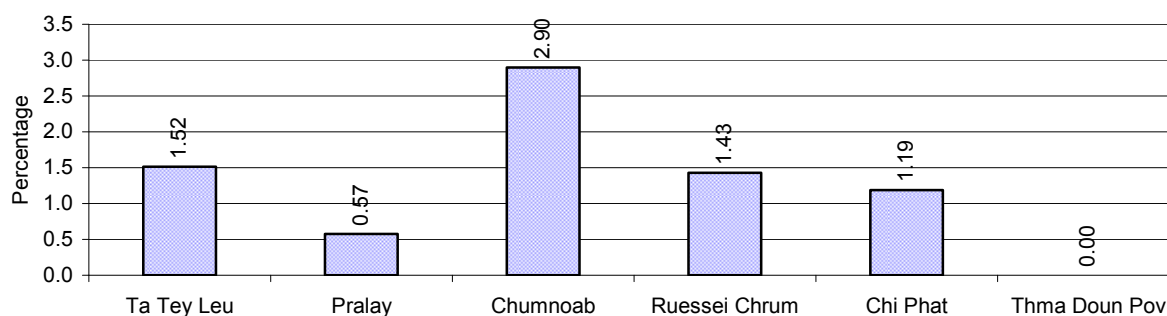


6 Gender

6.1 Registered Domestic Violence over 3 years

Description		2006	2007	2008
Families experiencing domestic violence		11 families	14 families	14 families(s)
% families experiencing domestic violence		1 %	1 %	1 %
Domestic violence cases reported by village chiefs		16 case(s)	12 case(s)	16 case(s)
Type	Physical violence	9 case(s)	12 case(s)	8 case(s)
	Sexual violence	0 case(s)	0 case(s)	0 case(s)
	Mental violence	4 case(s)	0 case(s)	7 case(s)
	Household economic violence	3 case(s)	0 case(s)	1 case(s)
Number of administrative decisions on domestic violence		16 case(s)	10 case(s)	13 case(s)
% of administrative decisions on domestic violence		100 %	83 %	81 %

6.2 Percentage of registered cases of Families experiencing domestic Violence, by Commune, in 2008



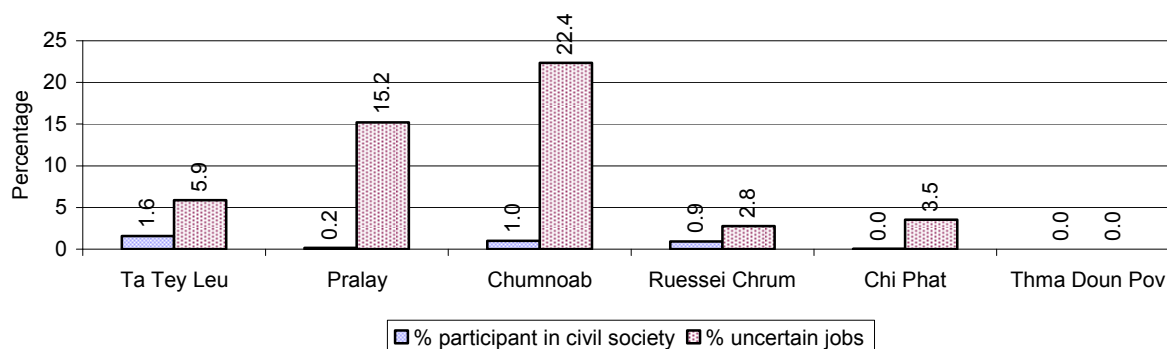
Note: Calculated as a percentage of the total number of families in each commune

6.3 Women's involvement over 3 years

Description	2006 %	2007 %	2008	
			%	Number
People participating in civil society	2%	2%	1%	66 person(s)
Women participating in civil society	1%	1%	0%	22 person(s)
People, 18-60 yrs, with uncertain/irregular jobs	5%	8%	12%	275 person(s)
Women, 18-60 yrs, with uncertain/irregular jobs	4%	6%	6%	138 person(s)

Note: Participation can be in NGOs, CBOs, credit groups, women's unions, parties and other civil society organizations. The first section is calculated as a percentage of the total population. The second section is calculated as a percentage of the total 18-60 year old population.

6.4 Percentage of Female Participants in Civil Society and of 18-60 year women with uncertain Jobs, by Commune, in 2008



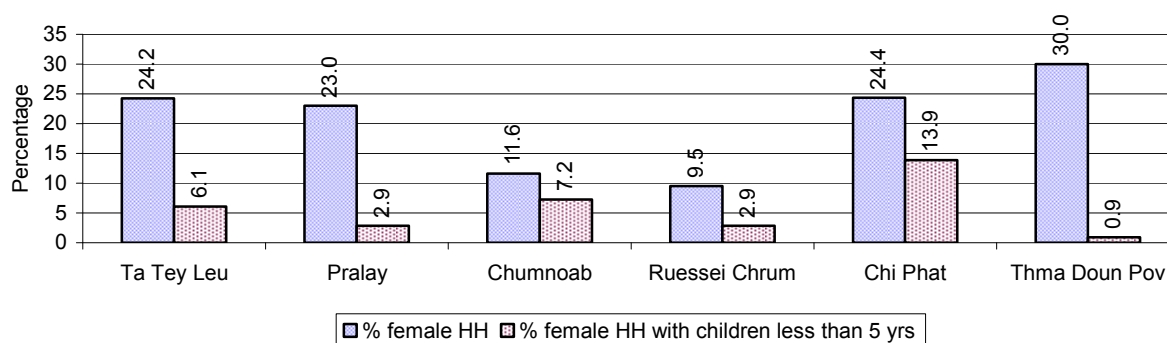
Note: Percentage of female participants in civil society is calculated as a percentage of the total population per commune. The percentage of 18-60 years old women with uncertain jobs is calculated as a percentage of the total 18-60 year old population per commune.

6.5 Female-headed Households over 3 years

Families with:	2006 %	2007 %	2008	
			%	Number
Households in which a woman is the family head	37%	41%	21%	256 families
Households in which a woman is the family head with children of less than 5 yrs	17%	13%	8%	95 families

Note: Calculated as a percentage of the total number of families

6.6 Percentage female-headed Households and with Children of less than 5 years old, by Commune, in 2008



Note: Calculated as a percentage of the total number of families in each commune
HH: Headed Household

7 Indigenous People in the District

7.1 Ethnic Minorities in the District over 3 years

Race of indigenous	2006		2007		2008	
	# families	# population	# families	# population	# families	# population
Phnong	0 families	0 person(s)	0 families	0 person(s)	0 families	0 person(s)
Kouy	0 families	0 person(s)	0 families	0 person(s)	0 families	0 person(s)
Stieng	0 families	0 person(s)	0 families	0 person(s)	0 families	0 person(s)
Mil	0 families	0 person(s)	0 families	0 person(s)	0 families	0 person(s)
Kroal	0 families	0 person(s)	0 families	0 person(s)	0 families	0 person(s)
Thmorn	0 families	0 person(s)	0 families	0 person(s)	0 families	0 person(s)
Khaonh	0 families	0 person(s)	0 families	0 person(s)	0 families	0 person(s)
Tompouonn	0 families	0 person(s)	0 families	0 person(s)	0 families	0 person(s)
Charay	0 families	0 person(s)	0 families	0 person(s)	0 families	0 person(s)
Kroeung	0 families	0 person(s)	0 families	0 person(s)	0 families	0 person(s)
Kavet	0 families	0 person(s)	0 families	0 person(s)	0 families	0 person(s)
Saouch	0 families	0 person(s)	0 families	0 person(s)	0 families	0 person(s)
Lun	0 families	0 person(s)	0 families	0 person(s)	0 families	0 person(s)
Kachak	0 families	0 person(s)	0 families	0 person(s)	0 families	0 person(s)
Praov	0 families	0 person(s)	0 families	0 person(s)	0 families	0 person(s)
Others	0 families	0 person(s)	0 families	0 person(s)	4 families	24 person(s)
Total	0 families	0 person(s)	0 families	0 person(s)	4 families	24 person(s)

Note: "Others" refer to other ethnic groups which are not listed.

7.2 Other Minorities in the District over 3 years

Minority	2006		2007		2008	
	# families	# population	# families	# population	# families	# population
Khmer Islamic	0 families	0 person(s)	0 families	0 person(s)	0 families	0 person(s)
Vietnamese	6 families	23 person(s)	5 families	24 person(s)	6 families	28 person(s)
Laos	0 families	0 person(s)	0 families	0 person(s)	0 families	0 person(s)

Note: Number of indigenous and minority population are additional data, so some village may not recorded.

SECTION C: PLANS AND PROJECTS

8 Priorities and Plans

8.1 Priorities of Commune Councils for 2009 in the District by Sector

The District Priority Activity Matrix (DPAM) data are taken from the CDPD. The DPAM is used for the District Integration Workshop (DIW), to show what kind of projects the commune has proposed in their Commune Investment Plan (CIP) for 2009. Donors, departments and other agencies then consider which projects they want to support and which projects they are not interested in. This results in Temporary Agreements between the Commune Council and the Supporter (NGO, Department, private donor, etc), as shown in table 8.2

No.	Project Name	Ta Tey Leu	Pralay	Chumnoab	Ruessei Chrum	Chi Phat	Thma Doun Pov	Req.Project
		90701	90702	90703	90704	90705	90706	Total
Economic								
1	Compost fertilizer training		2 training		1 training		1 training	3
2	Chemical and pesticide application training		2 training				2 training	2
3	Fruit tree cultivation training	4 training			1 training			2
4	Mixed farming system training	3 training			1 training		2 training	3
5	Rice seed production training						2 training	1
6	Subsidiary cropping technique training	3 training					2 training	2
7	Agricultural machinery training	1 Team						1
8	Rice cultivation technique training	2 training						1
9	Corn cultivation demonstration	2 training						1
10	E.M technique training	3 training						1
11	Animal raising training		4 training		1 training	1 training	2 training	5
12	Cow raising training				1 training			1
13	Agriculture association activation	6 day						1
14	Agricultural marketing	1 Course/year	2 training					3
15	Animal raising community support		2 training				4 Fishing Community	2
16	Rice seed request		1000 Kg		1 T		1 T	3
17	Fruit trees seedling request		500 Tree			200 Tree		2
18	Calf for raising request		20 Head					1
19	Sow for raising request		70 Head		105 Head		50 Head	3
20	Pesticide request				1 training			1
21	Agricultural tools request		40 family		20 set	2 set	1 set	5
22	Vegetable seeds request				1100 items		10 items	2
23	Chicken request		200 Head		1100 Head	500 Head	4 village	4

District Data Book 2009: Development Plans and Projects

No.	Project Name	Ta Tey Leu	Pralay	Chumnoab	Ruessei Chrum	Chi Phat	Thma Doun Pov	Req.Project
		90701	90702	90703	90704	90705	90706	Total
24	Family fish pond construction		4 Pond	20 Pond				2
25	Fish hatchery station construction	1 training						1
26	Fishing technique training		2 training					1
27	Marin aquaculture training	2 training						1
28	Crocodiles seedling provision			30000 Head				1
29	Road maintenance committee		4 Team	2 Team	2 Team			3
30	Road maintenance project	4 km			2 training			2
31	Laterite/natural gravel road construction			2 km				1
32	Culvert construction		8 place	1 place			2 place	3
33	Bridger construction	2 place					3 place	2
34	Laterite/natural gravel road repairing	6 km	3 km		10 km	2 km	3 km	5
35	Culvert repairing	6 place			5 place			2
36	Bridger repairing	3 place						1
37	Dam construction	10 km						2
38	Canal repairing				2 place			1
39	Dam repairing			1 place				1
40	Cash credit	1 Team	60 family	63 family	40 place		100 family	6
41	Crop seed credit	2000 Tree						1
42	Cow bank						20 Head	1
43	Livestock bank			20 Head				1
44	Saving group association strengthening	1 Fishing Community						1
45	Development of natural tourism area				1 place		1 place	2
46	Tourist zone management committee establishing/ strengthening		4 place	1 place	1 time		2 Fishing Community	4
47	Small-scale hydro-electricity construction	1 place			1 place		4 Fishing Community	4
48	Small-scale handicraft establishments	3 training						1
49	Power tillage		4 set					1
Social								
1	Family planning	1 Month						1
2	Antenatal care	1 Month						1
3	Health/hygiene education for local people			2 time				1

District Data Book 2009: Development Plans and Projects

No.	Project Name	Ta Tey Leu	Pralay	Chumnoab	Ruessei Chrum	Chi Phat	Thma Doun Pov	Req.Project
		90701	90702	90703	90704	90705	90706	Total
4	Health education on water use hygiene		2 training				2 training	2
5	Children immunization provision	4 time						1
6	Health clinic service	1 Month						1
7	Health network creation/strengthening	1 Month	12 time		12 Month			3
8	Emergency network creation/operation			15 time				1
9	VHV training	2 training						1
10	Khmer traditional medicine practitioner training				2 Team		2 Team	2
11	DOTS mobile implementation	1 Month						1
12	Maternal health care education	1 Month						1
13	Latrine construction	130 room	50 toilet	20 toilet	30 toilet		100 toilet	5
14	Latrine use education			1 training	1 training			2
15	Sanitation day campaign organizing		2 training					1
16	Sanitation education	1 training					2 training	2
17	Village health post construction	1 building	1 building	1 building		1 building		4
18	Pump wells construction	10 well		3 well	5 well	4 well		4
19	Ring wells construction						10 well	1
20	Safe water equipment maintaining/repairing training			3 Team				1
21	Literacy class		4 class	2 class	1 time			3
22	Literacy teacher support						4 person	1
23	Literacy class participation encouragement						1 time	1
24	School building					1 building	2 building	2
25	Primary school creation/construction	6 room						1
26	Kindergarten school construction/repair				2 room			1
27	Motivating pupil's parents for school enrollment						1 time	1
28	Teacher/volunteer teacher need	5 person						1
29	School enrollment encouragement project	1 place						1
30	Education for all dissemination			1 time				1
31	Food/meal provision to school children	1 training						1
32	Scholarship provision to poor pupils	1 Course/year					87 person	2
33	Vocational training			1 training			2 training	2
34	English language class				2 room			1
35	Teacher/volunteer teacher encouragement needs	1						1

District Data Book 2009: Development Plans and Projects

No.	Project Name	Ta Tey Leu	Pralay	Chumnoab	Ruessei Chrum	Chi Phat	Thma Doun Pov	Req.Project
		90701	90702	90703	90704	90705	90706	Total
		Course/year						
36	Food for work needs					2 km		1
37	Vulnerable group aid/support	1 training						1
NREM								
1	Environmental awareness and law education	1 training						1
2	Fishery law education	1 training		1 time	1 time		2 training	4
3	Forestry law education	1 training	4 training		1 training		2 training	4
4	Establishment of NREM committee	1 Course/year						1
5	Kravanh essence awareness dissemination				2 training			1
6	NREM education campaign	1 training						1
7	Establishment of tree nursery				1 place		4 place	2
8	Illegal fishing prevention						12 Month	1
9	Strengthening fishery community			2 Fishing Community				1
10	Community forestry activities support			2 Forestry Community	2 Fishing Community	1 Fishing Community		3
11	Biogas cooking project	2 training						1
Administration and Security								
1	Civil registration encouragement		2 time					1
2	Commune study tour	6 day						1
3	Village office construction/renovation		2 building		2 building	2 building	4 building	4
4	Land law dissemination	1 training			1 training			2
5	Provision of land titles/certificates				210 doc			1
6	Land registration dissemination/enforcement	200 ha						1
7	Land use planning	5 place						1
8	Land conflict resolution committee strengthening				12 training			1
9	Forest protection boundary identification	4 ha						1
10	Social land concession project				500 ha		300 ha	2
11	Law/regulation dissemination			1 time		1 training	1 time	3
12	Information board provision/creation/built		4 piece		2 Info-board		4 Info-board	3
13	Hospitality and tourism law dissemination						1 time	1
14	Women association formation/support	1 place						1

District Data Book 2009: Development Plans and Projects

No.	Project Name	Ta Tey Leu	Pralay	Chumnoab	Ruessei Chrum	Chi Phat	Thma Doun Pov	Req.Project
		90701	90702	90703	90704	90705	90706	Total
Gender								
1	Women role in development strengthening/dissemination						2 training	1
2	Women capacity building for social participation			1 time				1
3	Women and men roles/rights dissemination		2 training	1 training			2 training	3
4	Women vocational training		1 training		1 training	1 training	2 training	4
5	Tailor skill training				5 training			1
6	Materials support to create women job				2 time			1
7	Vine/rattan/leaf/mat weaving skill training	4 training						1
8	Sewing center construction/operation						5 training	1
9	Law against domestic violence dissemination		4 training		1 training		12 time	4
10	Rescue children & women from violence				12 family			1

Source: CDPD – District Priority Matrix

8.2 Temporary Agreements by Commune, for 2009²

At the District Integration Workshop (DIW) the Supporters (donors, agencies, private donors, NGOs, etc.) identify which projects/activities they would like to support or they put forward their own projects to be implemented in a particular commune. Once there is agreement between Commune Councils and Supporters on specific projects a **Temporary Agreement** is signed by the commune and the Supporter to show their mutual commitment to the identified projects/activities.

It is important to keep in mind that such Temporary Agreements do not necessarily result in implementation.

8.2.1 Temporary Agreements for 2009 as per DIW 2008 for Commune: Ta Tey Leu

Commune GIS	Commune	Temporary Agreements				Supporter	Funding Source	Listed in CIP befor DIW
		Project Name	Quantity	Unit	Est.Cost (K.Riels)			
Economic								
90701	Ta Tey Leu	Livestock vaccinating and curing support	1	Time	0	Department of Agriculture Forestry and Fisheries		<input type="checkbox"/>
90701	Ta Tey Leu	Road maintenance project	21	km	0	Department of Rural Development		✓
90701	Ta Tey Leu	Power tillage purchasing	1	Time	12000	CI		<input type="checkbox"/>
90701	Ta Tey Leu	Pesticide spraying support	1	Time	0	Department of Agriculture Forestry and Fisheries		<input type="checkbox"/>
Social								
90701	Ta Tey Leu	Village health volunteer supervision	0	Course/year	0	Partners for Development		<input type="checkbox"/>
90701	Ta Tey Leu	Vitamin A and deworming pills supply	2	Time	0	Department of Health		<input type="checkbox"/>
90701	Ta Tey Leu	Teacher/volunteer teacher need	2	person	2800	Department of Education Youth and Sports		✓
90701	Ta Tey Leu	World TB combat week organizing	1	Time	0	Department of Health		<input type="checkbox"/>
90701	Ta Tey Leu	Breastfeeding world week organizing	1	Time	8	CARE International in Cambodia		<input type="checkbox"/>
90701	Ta Tey Leu	Impregnation mosquito net distribution and re-impregnating	2	Time	0	Department of Health		<input type="checkbox"/>
90701	Ta Tey	VHV training	8	training	748	CARE International in		✓

² Not all the data from the CDPD has been translated to English, this has resulted in some cells in the TA tables being blank.

District Data Book 2009: Development Plans and Projects

Commune GIS	Commune	Temporary Agreements				Supporter	Funding Source	Listed in CIP befor DIW
		Project Name	Quantity	Unit	Est.Cost (K.Riels)			
	Leu					Cambodia		
90701	Ta Tey Leu	Family planning	24	Time	2332	CARE International in Cambodia		✓
90701	Ta Tey Leu	Antenatal care	12	Time	0	Department of Health		✓
90701	Ta Tey Leu	DOTS mobile implementation	28	Time	1144	CARE International in Cambodia		✓
90701	Ta Tey Leu	Children immunization provision	13	Time	20	CARE International in Cambodia		✓
90701	Ta Tey Leu	Health network creation/strengthening	43	Course/year	912	CARE International in Cambodia		✓
90701	Ta Tey Leu	Maternal health care education	1	training	20	CARE International in Cambodia		✓
90701	Ta Tey Leu	Health center committee meeting support	4	Time	500	CARE International in Cambodia		□
90701	Ta Tey Leu	Impregnated mosquitoes net distribution to target people	0	time	0	Partners for Development		□
90701	Ta Tey Leu	Communication system establishing	1	place	0	Partners for Development		□
90701	Ta Tey Leu	VHV bi-monthly meeting support	2	Course/year	0	Partners for Development		□
90701	Ta Tey Leu	Health center support committee meeting	3	Time	0	Partners for Development		□
90701	Ta Tey Leu	VHV transfer suspected sickness people to health center	0	Course/year	0	Partners for Development		□
90701	Ta Tey Leu	Health education and transfer system training for volunteer and CC	1	time	0	Partners for Development		□
90701	Ta Tey Leu	Small health fund support for health center committee to combat malaria	4	time	0	Partners for Development		□
90701	Ta Tey Leu	Malaria combat planning formulation meeting	1	time	0	Partners for Development		□
90701	Ta Tey Leu	Health clinic service	12	Month	0	Department of Health		✓
90701	Ta Tey	Re-impregnating mosquito net	1	time	0	Partners for Development		□

District Data Book 2009: Development Plans and Projects

Commune GIS	Commune	Temporary Agreements				Supporter	Funding Source	Listed in CIP before DIW
		Project Name	Quantity	Unit	Est.Cost (K.Riels)			
	Leu							
90701	Ta Tey Leu	Tuberculosis cases searching	6	Time	0	Department of Health		<input type="checkbox"/>
90701	Ta Tey Leu	Impregnable mosquito net use training to community	1	time	0	Partners for Development		<input type="checkbox"/>
90701	Ta Tey Leu	Bird flue awareness dissemination	23	Course/year	4656	CARE International in Cambodia		<input type="checkbox"/>
90701	Ta Tey Leu	TB education at secondary school	1	Time	0	Department of Health		<input type="checkbox"/>
90701	Ta Tey Leu	HIV/AIDS world day organizing	1	Time	0	Department of Health		<input type="checkbox"/>
90701	Ta Tey Leu	Health post re-generating	1	place	0	Department of Health		<input type="checkbox"/>
90701	Ta Tey Leu	Malaria weekly movie show and quizzes	1	time	0	Partners for Development		<input type="checkbox"/>
NREM								
90701	Ta Tey Leu	Warden field patrol support	1	Time	16840	CI		<input type="checkbox"/>
90701	Ta Tey Leu	Administrative work support	1	Time	1200	CI		<input type="checkbox"/>
90701	Ta Tey Leu	Teachers support	1	Time	1200	CI		<input type="checkbox"/>
Administration and Security								
90701	Ta Tey Leu	Geographical data collection using GPSs and data entry	1	time	0	Partners for Development		<input type="checkbox"/>
90701	Ta Tey Leu	Land law dissemination	1	training	0	Department of Land Management, Urban Planning & Construction		<input type="checkbox"/>

8.2.2 Temporary Agreements for 2009 as per DIW 2008 for Commune: Pralay

Commune GIS	Commune	Temporary Agreements				Supporter	Funding Source	Listed in CIP before DIW
		Project Name	Quantity	Unit	Est.Cost (K.Riels)			
Economic								
90702	Pralay	Power tillage purchasing	1	set	36000	CI		<input type="checkbox"/>
90702	Pralay	Livestock vaccinating support	2	Time	0	Department of Agriculture Forestry and Fisheries		<input type="checkbox"/>
90702	Pralay	Pesticide spraying support	1	Time	0	Department of Agriculture Forestry and Fisheries		<input type="checkbox"/>
Social								
90702	Pralay	World TB combat week organizing	1	Time	0	Department of Health	PIF	<input type="checkbox"/>
90702	Pralay	TB research and treatment support	12	Time	11	CARE International in Cambodia		<input type="checkbox"/>
90702	Pralay	Birth spacing materials provision	24	Time	2332	CARE International in Cambodia		<input type="checkbox"/>
90702	Pralay	Village health committee administrative	4	Time	240	CARE International in Cambodia		<input type="checkbox"/>
90702	Pralay	Quarterly meeting of village health committee	4	Time	430	CARE International in Cambodia		<input type="checkbox"/>
90702	Pralay	Quarterly meeting of health center committee	4	Time	500	CARE International in Cambodia		<input type="checkbox"/>
90702	Pralay	Local health service provision	12	Time	132	CARE International in Cambodia		<input type="checkbox"/>
90702	Pralay	Village health volunteer supervision	0	Course/year	0	Partners for Development		<input type="checkbox"/>
90702	Pralay	Maternity health care and breastfeeding service	16	Time	448	CARE International in Cambodia		<input type="checkbox"/>
90702	Pralay	Community DOTS implementation monitoring meeting support	24	Time	984	CARE International in Cambodia		<input type="checkbox"/>
90702	Pralay	Impregnation mosquito net distribution and re-impregnating	2	Time	0	Department of Health	PIF	<input type="checkbox"/>
90702	Pralay	HIV/AIDS prevention day	1	Time	0	Department of Health	PIF	<input type="checkbox"/>
90702	Pralay	TB research and treatment support	12	Time	0	Department of Health		<input type="checkbox"/>
90702	Pralay	Maternity health care service delivery	12	Time	0	Department of Health		<input type="checkbox"/>

District Data Book 2009: Development Plans and Projects

Commune GIS	Commune	Temporary Agreements				Supporter	Funding Source	Listed in CIP before DIW
		Project Name	Quantity	Unit	Est.Cost (K.Riels)			
90702	Pralay	Bird flue awareness promotion	6	Course/year	3388	CARE International in Cambodia		<input type="checkbox"/>
90702	Pralay	Village health worker and TBA strengthening	42	Course/year	824	CARE International in Cambodia		<input type="checkbox"/>
90702	Pralay	Re-impregnating mosquito net	1	time	0	Partners for Development		<input type="checkbox"/>
90702	Pralay	Communication system establishing	1	Course/year	0	Partners for Development		<input type="checkbox"/>
90702	Pralay	VHV bi-monthly meeting support	2	Course/year	0	Partners for Development		<input type="checkbox"/>
90702	Pralay	Health center support committee meeting	0	Course/year	0	Partners for Development		<input type="checkbox"/>
90702	Pralay	VHV transfer suspected sickness people to health center	0	Course/year	0	Partners for Development		<input type="checkbox"/>
90702	Pralay	Health education and transfer system training for volunteer and CC	1	time	0	Partners for Development		<input type="checkbox"/>
90702	Pralay	Small health fund support for health center committee to combat malaria	4	time	0	Partners for Development		<input type="checkbox"/>
90702	Pralay	World TB combat week organizing	1	Time	44	CARE International in Cambodia		<input type="checkbox"/>
90702	Pralay	Malaria weekly movie show and quizzes	0	Course/year	0	Partners for Development		<input type="checkbox"/>
90702	Pralay	Community DOTS application monitoring training to watchdog group	1	Course/year	11	CARE International in Cambodia		<input type="checkbox"/>
90702	Pralay	Impregnated mosquitoes net distribution to target people	0	time	0	Partners for Development		<input type="checkbox"/>
90702	Pralay	Impregnable mosquito net use training to community	1	time	0	Partners for Development		<input type="checkbox"/>
90702	Pralay	Malaria combat planning formulation meeting	1	time	0	Partners for Development		<input type="checkbox"/>
NREM								
90702	Pralay	Teachers support	1	Time	3600	CI		<input type="checkbox"/>
90702	Pralay	Administrative work support	1	Course/year	1440	CI		<input type="checkbox"/>
90702	Pralay	Participatory Land Use Planning (PLUP) demarcation	1	Time	12000	CI		<input type="checkbox"/>
90702	Pralay	Warden field patrol support	1	Time	33200	CI		<input type="checkbox"/>

Commune GIS	Commune	Temporary Agreements				Supporter	Funding Source	Listed in CIP before DIW
		Project Name	Quantity	Unit	Est.Cost (K.Riels)			
Administration and Security								
90702	Pralay	Geographical data collection using GPSs and data entry	1	time	0	Partners for Development		<input type="checkbox"/>
90702	Pralay	Cadastral law dissemination	1	Course/year	0	Department of Land Management, Urban Planning & Construction		<input type="checkbox"/>
90702	Pralay	Khmer rouge trial dissemination	8	Course/year	0	Partners for Development		<input type="checkbox"/>
Gender								
90702	Pralay	Law against domestic violence dissemination	4	training	0	Cambodia Protection Rights of Women and Children Association		✓

8.2.3 Temporary Agreements for 2009 as per DIW 2008 for Commune: Chumnoab

Commune GIS	Commune	Temporary Agreements				Supporter	Funding Source	Listed in CIP before DIW
		Project Name	Quantity	Unit	Est.Cost (K.Riels)			
Economic								
90703	Chumnoab	Pesticide spraying support	0	Time	0	Department of Agriculture Forestry and Fisheries		<input type="checkbox"/>
90703	Chumnoab	Livestock vaccinating and curing support	2	Time	0	Department of Agriculture Forestry and Fisheries		<input type="checkbox"/>
90703	Chumnoab	Funding support for buffalo purchasing	0	Head	16000	CI		<input type="checkbox"/>
Social								
90703	Chumnoab	Breastfeeding world week organizing	1	Time	8	CARE International in Cambodia		<input type="checkbox"/>
90703	Chumnoab	Teacher salary support	1	person	1200	CI		<input type="checkbox"/>
90703	Chumnoab	Bird flue awareness promotion	4	Course/year	1696	CARE International in Cambodia		<input type="checkbox"/>
90703	Chumnoab	Antenatal and postnatal care education	1	Course/year	20	CARE International in Cambodia		<input type="checkbox"/>
90703	Chumnoab	Health network	43	Course/year	912	CARE International in		<input type="checkbox"/>

District Data Book 2009: Development Plans and Projects

Commune GIS	Commune	Temporary Agreements				Supporter	Funding Source	Listed in CIP before DIW
		Project Name	Quantity	Unit	Est.Cost (K.Riels)			
		creation/strengthening				Cambodia		
90703	Chumnoab	Children vaccinating support	13	Time	20	CARE International in Cambodia		<input type="checkbox"/>
90703	Chumnoab	DOTS community implementation to combat TB	28	Time	1144	CARE International in Cambodia		<input type="checkbox"/>
90703	Chumnoab	Antenatal care service provision	12	Time	0	Department of Health		<input type="checkbox"/>
90703	Chumnoab	Village health volunteers training	8	Course/year	748	CARE International in Cambodia		<input type="checkbox"/>
90703	Chumnoab	Village health volunteer supervision	0	Course/year	0	Department of Health	PIF	<input type="checkbox"/>
90703	Chumnoab	Health center committee strengthening meeting	4	Time	500	CARE International in Cambodia		<input type="checkbox"/>
90703	Chumnoab	Medical consultation and treatment services delivery	12	Time	0	CARE International in Cambodia	PIF	<input type="checkbox"/>
90703	Chumnoab	Health education and transfer system training for volunteer and CC	1	Time	0	Department of Health	PIF	<input type="checkbox"/>
90703	Chumnoab	Communication system establishing	1	place	0	Department of Health	PIF	<input type="checkbox"/>
90703	Chumnoab	VHV bi-monthly meeting support	2	Time	0	Department of Health	PIF	<input type="checkbox"/>
90703	Chumnoab	Family planning program	24	Time	2332	CARE International in Cambodia		<input type="checkbox"/>
90703	Chumnoab	VHV transfer suspected sickness people to health center	0	Time	0	Department of Health		<input type="checkbox"/>
90703	Chumnoab	Vitamin A and deworming pills supply to children	2	Time	0	Department of Health	PIF	<input type="checkbox"/>
90703	Chumnoab	Small health fund support for health center committee to combat malaria	4	Time	0	Department of Health	PIF	<input type="checkbox"/>
90703	Chumnoab	Malaria combat planning formulation meeting	1	Time	0	Department of Health	PIF	<input type="checkbox"/>
90703	Chumnoab	Malaria weekly movie show and quizzes	0		0	Department of Health	PIF	<input type="checkbox"/>
90703	Chumnoab	Re-impregnating mosquito net	1	Time	0	Department of Health	PIF	<input type="checkbox"/>
90703	Chumnoab	Impregnated mosquitoes net distribution to target people	1	Time	0	Department of Health	PIF	<input type="checkbox"/>
90703	Chumnoab	Impregnable mosquito net use training to community	1	Time	0	Department of Health	PIF	<input type="checkbox"/>

District Data Book 2009: Development Plans and Projects

Commune GIS	Commune	Temporary Agreements				Supporter	Funding Source	Listed in CIP before DIW
		Project Name	Quantity	Unit	Est.Cost (K.Riels)			
90703	Chumnoab	World TB combat week organizing	1	Time	0	Department of Health	PIF	<input type="checkbox"/>
90703	Chumnoab	Impregnation mosquito net distribution and re-impregnating	2	Time	0	Department of Health	PIF	<input type="checkbox"/>
90703	Chumnoab	Health center support committee meeting	3	Time	0	Department of Health	PIF	<input type="checkbox"/>
NREM								
90703	Chumnoab	Participatory Land Use Planning (PLUP) demarcation	0		12000	CI		<input type="checkbox"/>
90703	Chumnoab	Budget support to admin works	0		1440	CI		<input type="checkbox"/>
90703	Chumnoab	Budget support to warden works	0		16480	CI		<input type="checkbox"/>
Administration and Security								
90703	Chumnoab	Geographical data collection using GPSs and data entry	1	Time	0	Department of Health	PIF	<input type="checkbox"/>
90703	Chumnoab	Cadastral law dissemination	1	Course/year	0	CI		<input type="checkbox"/>
Gender								
90703	Chumnoab	Sexual abuse prevention	1	Course/year	0	Association for Development and Human Rights of Cambodia		<input type="checkbox"/>
90703	Chumnoab	Human trafficking prevention training	1	Course/year	0	Association for Development and Human Rights of Cambodia		<input type="checkbox"/>
90703	Chumnoab	Domestic violence and gender	1	Course/year	0	Association for Development and Human Rights of Cambodia		<input type="checkbox"/>

8.2.4 Temporary Agreements for 2009 as per DIW 2008 for Commune: Ruessei Chrum

Commune GIS	Commune	Temporary Agreements				Supporter	Funding Source	Listed in CIP before DIW
		Project Name	Quantity	Unit	Est.Cost (K.Riels)			
Economic								
90704	Ruessei Chrum	Pesticide spraying support	0	Time	0	Department of Agriculture Forestry and Fisheries		<input type="checkbox"/>
90704	Ruessei Chrum	Bird bio-safety raising technique promotion and bird flue watchdog group formation	18	Course/year	1057	CARE International in Cambodia		<input type="checkbox"/>
90704	Ruessei Chrum	Livestock vaccinating and curing support	2	Time	0	Department of Agriculture Forestry and Fisheries		<input type="checkbox"/>
90704	Ruessei Chrum	Cash credit	0	place	0	WildAid		✓
Social								
90704	Ruessei Chrum	Family planning program	24	Time	2332	CARE International in Cambodia		<input type="checkbox"/>
90704	Ruessei Chrum	World TB combat week organizing	1	Time	0	Department of Health		<input type="checkbox"/>
90704	Ruessei Chrum	Impregnation mosquito net distribution and re-impregnating	2	Time	0	Department of Health		<input type="checkbox"/>
90704	Ruessei Chrum	Vitamin A supply to children and deworming	2	Time	0	Department of Health		<input type="checkbox"/>
90704	Ruessei Chrum	Medical consultation and treatment services delivery	12	Time	0	Department of Health		<input type="checkbox"/>
90704	Ruessei Chrum	Health center committee strengthening meeting	4	Time	500	CARE International in Cambodia		<input type="checkbox"/>
90704	Ruessei Chrum	Bird flue epidemic education materials	1	set	120	CARE International in Cambodia		<input type="checkbox"/>
90704	Ruessei Chrum	Village health volunteers training	8	Course/year	748	CARE International in Cambodia		<input type="checkbox"/>
90704	Ruessei Chrum	Improvement of safe poultry raising	6	Time	0	CARE International in Cambodia		<input type="checkbox"/>
90704	Ruessei Chrum	HIV/AIDS infected person assistance	12	Time	0	Department of Health		<input type="checkbox"/>
90704	Ruessei	DOTS community implementation	28	Time	1144	CARE International in		<input type="checkbox"/>

District Data Book 2009: Development Plans and Projects

Commune GIS	Commune	Temporary Agreements				Supporter	Funding Source	Listed in CIP befor DIW
		Project Name	Quantity	Unit	Est.Cost (K.Riels)			
	Chrum	to combat TB				Cambodia		
90704	Ruessei Chrum	Children vaccinating support	13	Time	20	CARE International in Cambodia		<input type="checkbox"/>
90704	Ruessei Chrum	Health network creation/strengthening	43	Course/year	912	CARE International in Cambodia		<input type="checkbox"/>
90704	Ruessei Chrum	Antenatal and postnatal care education	1	Course/year	20	CARE International in Cambodia		<input type="checkbox"/>
90704	Ruessei Chrum	Bird flue awareness promotion and strengthening roles and responsibility of watchdog	2	bottle	300	CARE International in Cambodia		<input type="checkbox"/>
90704	Ruessei Chrum	Breastfeeding world week organizing	1	Course/year	8	CARE International in Cambodia		<input type="checkbox"/>
90704	Ruessei Chrum	Health education and transfer system training for volunteer and CC	1	time	0	Partners for Development		<input type="checkbox"/>
90704	Ruessei Chrum	Village health volunteer supervision	0	Course/year	0	Partners for Development		<input type="checkbox"/>
90704	Ruessei Chrum	Communication system establishing	1	place	0	Partners for Development		<input type="checkbox"/>
90704	Ruessei Chrum	VHV bi-monthly meeting support	2	Time	0	Partners for Development		<input type="checkbox"/>
90704	Ruessei Chrum	Bird flue awareness training	1	Course/year	1272	CARE International in Cambodia		<input type="checkbox"/>
90704	Ruessei Chrum	VHV transfer suspected sickness people to health center	0	Course/year	0	Partners for Development		<input type="checkbox"/>
90704	Ruessei Chrum	Small health fund support for health center committee to combat malaria	4	time	0	Partners for Development		<input type="checkbox"/>
90704	Ruessei Chrum	Malaria combat planning formulation meeting	1	time	0	Partners for Development		<input type="checkbox"/>
90704	Ruessei Chrum	Malaria weekly movie show and quizzes	1	time	0	Partners for Development		<input type="checkbox"/>
90704	Ruessei Chrum	Re-impregnating mosquito net	1	time	0	Partners for Development		<input type="checkbox"/>

District Data Book 2009: Development Plans and Projects

Commune GIS	Commune	Temporary Agreements				Supporter	Funding Source	Listed in CIP befor DIW
		Project Name	Quantity	Unit	Est.Cost (K.Riels)			
90704	Ruessei Chrum	Impregnated mosquitoes net distribution to target people	0	time	0	Partners for Development		<input type="checkbox"/>
90704	Ruessei Chrum	Impregnable mosquito net use training to community	1	time	0	Partners for Development		<input type="checkbox"/>
90704	Ruessei Chrum	Capacity improvement roles of bird flue watchdog	12	Time	1056	CARE International in Cambodia		<input type="checkbox"/>
90704	Ruessei Chrum	Health center support committee meeting	3	Time	0	Partners for Development		<input type="checkbox"/>
NREM								
90704	Ruessei Chrum	Community forestry activities support	0	Fishing Community	0	WildAid		✓
90704	Ruessei Chrum	Forestry law education	0	training	0	WildAid		✓
90704	Ruessei Chrum	Fishery law education	0	time	0	WildAid		✓
90704	Ruessei Chrum	Kravanh essence awareness dissemination	0	training	0	WildAid		✓
Administration and Security								
90704	Ruessei Chrum	Land law dissemination	0	training	0	WildAid		✓
90704	Ruessei Chrum	Geographical data collection using GPSs and data entry	1	time	0	Partners for Development		<input type="checkbox"/>
90704	Ruessei Chrum	Cadastral law dissemination	1	Course/year	0	Department of Land Management, Urban Planning & Construction		<input type="checkbox"/>
90704	Ruessei Chrum	Khmer rouge trial dissemination	1	Course/year	0	Association for Development and Human Rights of Cambodia		<input type="checkbox"/>

8.2.5 Temporary Agreements for 2009 as per DIW 2008 for Commune: Chi Phat

Commune GIS	Commune	Temporary Agreements				Supporter	Funding Source	Listed in CIP before DIW
		Project Name	Quantity	Unit	Est.Cost (K.Riels)			
Economic								
90705	Chi Phat	Power tillage purchasing	0		34000	CI		<input type="checkbox"/>
90705	Chi Phat	Livestock vaccinating and curing support	0		0	Department of Agriculture Forestry and Fisheries		<input type="checkbox"/>
90705	Chi Phat	Pesticide spraying support	0		0	Department of Agriculture Forestry and Fisheries		<input type="checkbox"/>
Social								
90705	Chi Phat	HIV/AIDS infected person assistance	12	Time	0	Department of Health		<input type="checkbox"/>
90705	Chi Phat	Health center DOTS monthly community supervision support	12	Time	92	CARE International in Cambodia		<input type="checkbox"/>
90705	Chi Phat	Inflammation respiration disease and diarrhea control and supervision mission	12	Time	88	CARE International in Cambodia		<input type="checkbox"/>
90705	Chi Phat	World TB combat week organizing	1	Time	0	Department of Health		<input type="checkbox"/>
90705	Chi Phat	Impregnation mosquito net distribution and re-impregnating	2	Time	0	Department of Health		<input type="checkbox"/>
90705	Chi Phat	Vitamin A supply to children	2	Time	0	Department of Health		<input type="checkbox"/>
90705	Chi Phat	Medical consultation and treatment services delivery	12	Time	0	Department of Health		<input type="checkbox"/>
90705	Chi Phat	Health center committee strengthening meeting	4	Time	500	CARE International in Cambodia		<input type="checkbox"/>
90705	Chi Phat	Breastfeeding world week organizing	1	Time	8	CARE International in Cambodia		<input type="checkbox"/>
90705	Chi Phat	Village health volunteer supervision	0	Course/year	0	Partners for Development		<input type="checkbox"/>
90705	Chi Phat	Birth spacing materials for TBA	12	Time	200	CARE International in Cambodia		<input type="checkbox"/>
90705	Chi Phat	DOTS observers refresher training	1	Time	112	CARE International in Cambodia		<input type="checkbox"/>
90705	Chi Phat	DOTS community implementation monitoring	12	Time	888	CARE International in Cambodia		<input type="checkbox"/>
90705	Chi Phat	Basic service delivery	12	Time	132	CARE International in		<input type="checkbox"/>

District Data Book 2009: Development Plans and Projects

Commune GIS	Commune	Temporary Agreements				Supporter	Funding Source	Listed in CIP befor DIW
		Project Name	Quantity	Unit	Est.Cost (K.Riels)			
						Cambodia		
90705	Chi Phat	Community baby care by VHV and TBA monitoring	12	bottle	88	CARE International in Cambodia		<input type="checkbox"/>
90705	Chi Phat	Antenatal and birth spacing care awareness education	12	bottle	112	CARE International in Cambodia		<input type="checkbox"/>
90705	Chi Phat	Bird flue awareness, roles and responsibility of flue watchdog group	2	Course/year	300	CARE International in Cambodia		<input type="checkbox"/>
90705	Chi Phat	Teacher salary support	3	person	36000	CI		<input type="checkbox"/>
90705	Chi Phat	Village health volunteers training	8	Course/year	748	CARE International in Cambodia		<input type="checkbox"/>
90705	Chi Phat	Impregnable mosquito net use training to community	1	time	0	Partners for Development		<input type="checkbox"/>
90705	Chi Phat	Communication system establishing	1	place	0	Partners for Development		<input type="checkbox"/>
90705	Chi Phat	VHV bi-monthly meeting support	2	Time	0	Partners for Development		<input type="checkbox"/>
90705	Chi Phat	Health center support committee meeting	3	Time	0	Partners for Development		<input type="checkbox"/>
90705	Chi Phat	VHV transfer suspected sickness people to health center	0	Course/year	0	Partners for Development		<input type="checkbox"/>
90705	Chi Phat	Health education and transfer system training for volunteer and CC	1	time	0	Partners for Development		<input type="checkbox"/>
90705	Chi Phat	Small health fund support for health center committee to combat malaria	4	time	0	Partners for Development		<input type="checkbox"/>
90705	Chi Phat	Malaria combat planning formulation meeting	1	time	0	Partners for Development		<input type="checkbox"/>
90705	Chi Phat	Malaria weekly movie show and quizzes	1	time	0	Partners for Development		<input type="checkbox"/>
90705	Chi Phat	World TB combat week organizing	1	Time	44	CARE International in Cambodia		<input type="checkbox"/>
90705	Chi Phat	Impregnated mosquitoes net distribution to target people	0	time	0	Partners for Development		<input type="checkbox"/>
90705	Chi Phat	Tuberculosis cases searching within community	12	Time	112	CARE International in Cambodia		<input type="checkbox"/>
90705	Chi Phat	Women vaccination, birth spacing and maternity health care service	0		0	Department of Health		<input type="checkbox"/>

District Data Book 2009: Development Plans and Projects

Commune GIS	Commune	Temporary Agreements				Supporter	Funding Source	Listed in CIP before DIW
		Project Name	Quantity	Unit	Est.Cost (K.Riels)			
		provision						
90705	Chi Phat	Inflammation respiration disease and diarrhea control training	12	Time	88	CARE International in Cambodia		<input type="checkbox"/>
90705	Chi Phat	Community children sickness control training support	1	Time	288	CARE International in Cambodia		<input type="checkbox"/>
90705	Chi Phat	Quarterly TBA meeting support	4	Time	312	CARE International in Cambodia		<input type="checkbox"/>
90705	Chi Phat	TBA and midwife support	12	Time	68	CARE International in Cambodia		<input type="checkbox"/>
90705	Chi Phat	TBA training on antenatal and postnatal care	1	Course/year	20	CARE International in Cambodia		<input type="checkbox"/>
90705	Chi Phat	Bird flue dissemination materials support, posters, booklet, video spot	1	set	120	CARE International in Cambodia		<input type="checkbox"/>
90705	Chi Phat	Bird flue, roles and responsibility and prevention preparedness training	1	Course/year	152	CARE International in Cambodia		<input type="checkbox"/>
90705	Chi Phat	Birth spacing means distributors meeting	12		2132	CARE International in Cambodia		<input type="checkbox"/>
90705	Chi Phat	Re-impregnating mosquito net	1	time	0	Partners for Development		<input type="checkbox"/>
NREM								
90705	Chi Phat	Participatory Land Use Planning (PLUP) demarcation	0	Tree	12000	CI		<input type="checkbox"/>
90705	Chi Phat	Administrative work support	0		1200	CI		<input type="checkbox"/>
90705	Chi Phat	Warden field patrol support	0		30760	CI		<input type="checkbox"/>
Administration and Security								
90705	Chi Phat	Geographical data collection using GPSs and data entry	1	time	0	Partners for Development		<input type="checkbox"/>
90705	Chi Phat	Cadastral law dissemination	1	training	0	Department of Land Management, Urban Planning & Construction		<input type="checkbox"/>

8.2.6 Temporary Agreements for 2009 as per DIW 2008 for Commune: Thma Doun Pov

Commune GIS	Commune	Temporary Agreements				Supporter	Funding Source	Listed in CIP before DIW
		Project Name	Quantity	Unit	Est.Cost (K.Riels)			
Economic								
90706	Thma Doun Pov	Culvert construct	5	place	0	CI		✓
90706	Thma Doun Pov	Laterite road repairing	7000	m	0	CI		✓
90706	Thma Doun Pov	Bridge construction	2	place	0	CI		✓
90706	Thma Doun Pov	Livestock vaccinating support	0		0	Department of Agriculture Forestry and Fisheries		☐
90706	Thma Doun Pov	Pesticide spraying	0		0	Department of Agriculture Forestry and Fisheries		☐
90706	Thma Doun Pov	Community tourist services creation	0		0	WildAid		☐
90706	Thma Doun Pov	Eco-tourist side development	0		0	WildAid		☐
90706	Thma Doun Pov	Commune tourist site dissemination	0		0	WildAid		☐
Social								
90706	Thma Doun Pov	Village health committee administrative	24	Time	0	CARE International in Cambodia		☐
90706	Thma Doun Pov	DOTS mobile implementation to combat TB	12	Time	0	Department of Health		☐
90706	Thma Doun Pov	Impregnation mosquito net distribution and re-impregnating	1	Time	0	Department of Health		☐
90706	Thma Doun Pov	Women vaccination, birth spacing and maternity health care service provision	12	Time	0	Department of Health		☐
90706	Thma Doun Pov	Breastfeeding world week organizing	1	Time	0	CARE International in Cambodia		☐
90706	Thma Doun Pov	Children vaccination	12	Time	0	CARE International in Cambodia		☐
90706	Thma Doun	Vitamin A supply to children	1	Time	0	CARE International in		☐

District Data Book 2009: Development Plans and Projects

Commune GIS	Commune	Temporary Agreements				Supporter	Funding Source	Listed in CIP before DIW
		Project Name	Quantity	Unit	Est.Cost (K.Riels)			
	Pov					Cambodia		
90706	Thma Doun Pov	TBA training on antenatal and postnatal care	1	Time	0	CARE International in Cambodia		<input type="checkbox"/>
90706	Thma Doun Pov	Transfer high risk symptom pregnancy to health center for birth delivery	0		0	CARE International in Cambodia		<input type="checkbox"/>
90706	Thma Doun Pov	HIV/AIDS condolences day	1	Time	0	CARE International in Cambodia		<input type="checkbox"/>
90706	Thma Doun Pov	Quarterly TBA meeting support	4	Time	0	CARE International in Cambodia		<input type="checkbox"/>
90706	Thma Doun Pov	Scarlet fever curing service	12	Time	0	Department of Industry Mine and Energy		<input type="checkbox"/>
90706	Thma Doun Pov	Quarterly meeting of health center committee	0		0	CARE International in Cambodia		<input type="checkbox"/>
90706	Thma Doun Pov	Health network creation/strengthening	0		0	CARE International in Cambodia		<input type="checkbox"/>
90706	Thma Doun Pov	Bird flue awareness promotion	6	training	2892	CARE International in Cambodia		<input type="checkbox"/>
90706	Thma Doun Pov	First aid training for TBA	1	Time	0	CARE International in Cambodia		<input type="checkbox"/>
90706	Thma Doun Pov	Malaria weekly movie show and quizzes	1		0	Department of Health		<input type="checkbox"/>
90706	Thma Doun Pov	Village health volunteer supervision	0		0	Department of Health		<input type="checkbox"/>
90706	Thma Doun Pov	Communication system establishing	0		0	Department of Health		<input type="checkbox"/>
90706	Thma Doun Pov	VHV bi-monthly meeting support	6	Time	0	Department of Health		<input type="checkbox"/>
90706	Thma Doun Pov	Health center support committee meeting	4	Time	0	Department of Health		<input type="checkbox"/>
90706	Thma Doun Pov	VHV transfer suspected sickness people to health center	1	Time	0	Department of Health		<input type="checkbox"/>
90706	Thma Doun Pov	Health education and transfer system training for volunteer and CC	1	Time	0	Department of Health		<input type="checkbox"/>

District Data Book 2009: Development Plans and Projects

Commune GIS	Commune	Temporary Agreements				Supporter	Funding Source	Listed in CIP before DIW
		Project Name	Quantity	Unit	Est.Cost (K.Riels)			
90706	Thma Doun Pov	World TB combat week organizing	1	Time	0	Department of Health		<input type="checkbox"/>
90706	Thma Doun Pov	Malaria combat planning formulation meeting	1	Time	0	Department of Health		<input type="checkbox"/>
90706	Thma Doun Pov	HIV/AIDS carrier maternal health care support	0		0	CARE International in Cambodia		<input type="checkbox"/>
90706	Thma Doun Pov	Re-impregnating mosquito net	2	Time	0	Department of Health		<input type="checkbox"/>
90706	Thma Doun Pov	Mental support through religious leader	0	Course/year	0	CARE International in Cambodia		<input type="checkbox"/>
90706	Thma Doun Pov	Volunteer blood test support	0	Course/year	0	CARE International in Cambodia		<input type="checkbox"/>
90706	Thma Doun Pov	HIV/AIDS carriers home based care support	0	Course/year	0	CARE International in Cambodia		<input type="checkbox"/>
90706	Thma Doun Pov	Small health fund support for health center committee to combat malaria	4	Time	0	Department of Health		<input type="checkbox"/>
90706	Thma Doun Pov	Support monthly meeting of HIV/AIDS carriers	0	Course/year	0	CARE International in Cambodia		<input type="checkbox"/>
90706	Thma Doun Pov	Impregnated mosquitoes net distribution to target people	1	Time	0	Department of Health		<input type="checkbox"/>
90706	Thma Doun Pov	VHV training on village health care	0	Course/year	0	CARE International in Cambodia		<input type="checkbox"/>
90706	Thma Doun Pov	Travel cost support for HIV/AIDS affected children	0	Course/year	0	CARE International in Cambodia		<input type="checkbox"/>
90706	Thma Doun Pov	HIV/AIDS peer education support	0	Course/year	0	CARE International in Cambodia		<input type="checkbox"/>
90706	Thma Doun Pov	Impregnable mosquito net use training to community	1	Time	0	Department of Health		<input type="checkbox"/>
NREM								
90706	Thma Doun Pov	Bamboo community formation	0		0	WildAid		<input type="checkbox"/>
90706	Thma Doun Pov	Forestry law dissemination	0		0	Save Cambodia's Wildlife		<input type="checkbox"/>
Administration and Security								

District Data Book 2009: Development Plans and Projects

Commune GIS	Commune	Temporary Agreements				Supporter	Funding Source	Listed in CIP before DIW
		Project Name	Quantity	Unit	Est.Cost (K.Riels)			
90706	Thma Doun Pov	Sexual abuse protection	0		0	Association for Development and Human Rights of Cambodia		<input type="checkbox"/>
90706	Thma Doun Pov	Cadastral law dissemination	0		0	Department of Land Management, Urban Planning & Construction		<input type="checkbox"/>
90706	Thma Doun Pov	Geographical data collection using GPSs and data entry	1	Time	0	Department of Health		<input type="checkbox"/>
Gender								
90706	Thma Doun Pov	Human trafficking prevention training	10	training	0	Cambodia Protection Rights of Women and Children Association		<input type="checkbox"/>
90706	Thma Doun Pov	Law against domestic violence dissemination	3	training	0	Association for Development and Human Rights of Cambodia		✓

Source: CDPD, District Level Detail TA resulting from DIW

8.3 Outputs, estimated and actual costs of C/S Fund Projects between 2005 and 2008, by Commune

Commune	Project Type	Budget Year	Output		Quantity	Unit	Unit Cost MR	
			Description	Type			Estimate	Actual
Ta Tey Leu	Rural Transport	2005	Laterite road	Repair	1.575	Km	16.42	16.40
Ta Tey Leu	Rural Transport	2006	Single pipe culvert	New	4	Place	14.46	42.87
Ta Tey Leu	Rural Transport	2006	Laterite road	Repair	1.9	Km	18.88	42.87
Ta Tey Leu	Rural Transport	2006	Double pipe culvert	New	1	Place	5.99	42.87
Ta Tey Leu	Rural Transport	2007	Laterite road	Repair	1	Km	19.99	19.00
Pralay	Rural Transport	2005	Laterite road	Repair	1.41	Km	18.18	18.10
Pralay	Rural Transport	2006	Laterite road	New	1.5	Km	40.14	42.34
Pralay	Rural Transport	2008	Laterite road	Repair	2	Km	35.08	35.08
Chumnoab	Rural Transport	2005	Laterite road	Repair	0.926	Km	17.85	17.80
Chumnoab	Rural Transport	2006	Laterite road	Repair	2.5	Km	39.52	40.98
Chumnoab	Rural Transport	2008	Laterite road	Repair	2	Km	39.54	41.17
Ruessei Chrum	Rural Domestic Water Supplies	2005	Drilled well with Afridev pump	New	4	Place	17.13	17.13
Ruessei Chrum	Rural Transport	2006	Laterite road	Repair	1.29	Km	25.00	28.87
Ruessei Chrum	Rural Transport	2006	Single pipe culvert	New	2	Place	5.47	28.87
Ruessei Chrum	Rural Transport	2007	Laterite road	Repair	1.15	Km	24.60	24.52
Ruessei Chrum	Rural Transport	2008	Laterite road	Repair	1.16	Km	22.21	22.21
Chi Phat	Rural Transport	2005	Laterite road	Repair	1.23	Km	17.98	17.90
Chi Phat	Rural Transport	2006	Laterite road	Repair	2.7	Km	39.40	41.48
Chi Phat	Rural Transport	2008	Laterite road	Repair	1.8	Km	47.70	47.70
Thma Doun Pov	Rural Transport	2005	Laterite road	Repair	1.45	Km	22.30	22.30
Thma Doun Pov	Rural Transport	2006	Laterite road	Repair	1.95	Km	98.01	46.90
Thma Doun Pov	Rural Transport	2007	Single cell box culvert	New	1	Place	12.33	42.00
Thma Doun Pov	Rural Transport	2007	Laterite road	New	1.2	Km	29.75	42.00

Source: PID

8.4 Total Expenditure on C/S Fund Projects by sector and commune between 2005 and 2008

Sector	Total Cost in Million Riels					
	Ta Tey Leu	Pralay	Chumnoab	Ruessei Chrum	Chi Phat	Thma Doun Pov
Rural Domestic Water Supplies				17.13		
Rural Transport	78.27	95.52	99.95	75.60	107.08	111.20

Source: PID

8.5 Actual 2009 C/S Fund projects by Commune

Commune	Project Type	Project Output		Quantity	Unit	Fund Source (Riels)		
		Description	Type			Total	C/S	Local Contribution
Ta Tey Leu	Rural Transport	Triple cell box culvert 3.0m x 2.0m	New	1	Place	53,925,000	53,825,000	100,000
Pralay	Rural Transport	Laterite road	New	0.825	km	32,028,382	31,928,382	100,000
Chumnoab	Rural Transport	Laterite road	New	0.82	km	41,908,882	41,808,882	100,000
Ruessei Chrum	Rural Transport	Laterite road	Repair	1.23	km	33,519,400	33,419,400	100,000
Chi Phat	Rural Transport	Laterite road	New	1.42	km	51,045,844	51,045,844	0
Thma Doun Pov	Rural Transport	Laterite road	New	1.17	km	31,507,982	31,407,982	100,000

Source: PID

9 District level Projects from 2006 to 2009

District Initiative Projects (DIPs) are funded by Danida, DFID and PSDD (UNDP, DFID and SIDA).

Funding for 2006-2008

Between 2006 and 2008 there were 14 provinces funded by PSDD and 10 by Danida and DFID. The list of provinces and who funded these is below

Danida and DFID funded DIPs:

Kampong Cham	Kampong Speu	Koh Kong	Kratie	Monduliri
Pursat	Ratanakiri	Siem Reap	Sihanoukville	Kep

PSDD funded DIPs:

Banteay Meanchey	Battambang	Kampong Chhnang	Kandal	Phnom Penh
Prey Veng	Svay Rieng	Takeo	Kampong Thom	Preah Vihear
Stung Treng	Kampot	Oddar Meanchey	Pailin	

Funding for 2009

In 2009 there was a change to the number of provinces funded by the two streams. Danida and DFID were still funding the same 10 provinces they had been funding the previous three years, but two more provinces were added *Kampong Thom and Kampot*. Now PSDD funds 12 provinces and Danida and DFID fund 12.

9.1 District Initiative Infrastructure Projects from 2006 to 2009

9.1.1 District Initiative Infrastructure Projects for 2006 to 2008

Date	Project Name	Implementing Agencies	Budget (US\$)	Project Output & Capacity	Number of Beneficiaries
2007	Rehabilitate laterite road	Inter-commune	13,481.60		
2007	Build culverts	Inter-commune	22,771.60		
2008	Construction of small scale hydroelectricity	Inter-commune	23,900.00	1 place = 20 KW	3 communes, 450 families

9.1.2 District Initiative Infrastructure Projects in 2009

No District Initiative Infrastructure Projects have been implemented in this district for 2009

9.2 District Initiative Service Projects from 2006 to 2009

9.2.1 District Initiative Service Projects for 2006 to 2008

Date	Project Names	Implementing agencies	Budget (US\$)	Project Output & Capacity	Number of Beneficiaries
2007	Training on agri technique and demonstration	DAFF	2,447.00		
2007	Dissemination on fishery resources in conservation areas	DAFF	399.00		
2007	Feasibility study on small scale electricity	MIME	5,000.00		
2008	Training and demo on fruit tree plantation and provision of seeds	DAFF	1,496.00	1 training	total = 50 Ps, F = 25 Ps

9.2.2 District Initiative Service Projects in 2009

Project Name	Sector	Implementing Agency	Budget	Project outputs/ capacities	No. of Beneficiaries		Progress	Remarks on Issues of Progress
					Total	Female		
Training on forestry sub-products processing	CUL	PDoCFA	\$1,379.00	1 course	15	10	0%	Not yet done
Training on integrated farming system and subsidiary crop	AGR	PDA	\$2,673.50	2 course	50	25	0%	Not yet done
Dissemination on land conflict resolution and forest law	AGR	PDoNASRI	\$1,788.00	1 course	300	150	0%	Not yet done

9.3 Inter Commune Council Projects in 2008 and 2009

9.3.1 ICC Projects in 2008

Districts	Project Location	Beneficiary Commune/ Sangkat	Outputs	Project Size	Unit	Contract Cost	Fund Sources	
							ICC Fund	Community
Botum Sakor	Thmasa, Andong Tik	Thmasa, Andong Tik, Tanuon	Road box-culvert construction (1 triple)	2	Unit	\$29,900.00	\$29,750.00	\$150.00
Total for Botum Sakor						\$29,900.00	\$29,750.00	\$150.00
Khemara Phoumin	Dang Tung, Smach Meanchey	Dang Tung, Smach Meanchey	Drainage system construction	540	Metre	\$11,717.00	\$11,617.00	\$100.00
	Dang Tung, Smach Meanchey	Dang Tung, Smach Meanchey	Concret road construction	180	Metre	\$18,500.00	\$18,300.00	\$200.00
Total for Khemara Phoumin						\$30,217.00	\$29,917.00	\$300.00
Total Koh Kong Province						\$60,117.00	\$59,667.00	\$450.00

9.3.2 ICC Projects in 2009

Districts	Project Location	Beneficiary Commune/ Sangkat	Outputs	Project Size	Unit	Contract Cost	Fund Sources	
							ICC Fund	Community
Khemarak Phumin	Dang Tung, Smach Mean Chey, Stueng Veng	Dang Tung, Smach Mean Chey, Stueng Veng	Concrete Road Construction	500	Meter	Contract not yet signed		
	Smach Mean Chey	Dang Tung, Smach Mean Chey, Stueng Veng	Dissemination on Water Sanitation, Hygiene, and Environment	4	Course	Contract not yet signed		
Total for Khemarak Phumin Municipality						\$0.00	\$0.00	\$0.00
Bothum Sakor	Thmor Sor	Andoung Tuek, Thmor Sor, Ta Nuon, Kan Daul	Concrete Road (for high school)	2	place	Contract not yet signed		
	Thmor Sor	Andoung Tuek, Thmor Sor, Ta Nuon, Kan Daul	Technical Training on Machinery Repair	1	Course	Contract not yet signed		
	Andoung Tuek	Andoung Tuek, Thmor Sor	Technical Training on Lobster/Shrimp Conservation	1	Course	Contract not yet signed		
Total for Botum Sakor						\$0.00	\$0.00	\$0.00
Sre Ambel	Sre Ambel	Boueng Preav, Sre Ambel	Concrete Road Construction	150	Meter	Contract not yet signed		
	Chi Khor Loue, Chi Khor Kroam	Chi Khor Loue, Chi Khor Kroam	Dissemination on Water Sanitation, Hygiene, and Environment	6	Course	Contract not yet signed		
	Chi Kor Kraom, Chhroy Svay	Chi Khor Kroam, Chhroy Svay	Technical Training on Fish, Crab and Shrimp Raising	2	Course	Contract not yet signed		
	Dang Peng	Dang Peng, Sre Ambel, Chi Khor Luer.	Bridge Construction	35	Meter	Contract not yet signed		
Total For Sre Ambel						\$0.00	\$0.00	
Total for Kah Kong						Contract not yet signed		

Source: ICC project, Ministry of Interior (DoLA), -UNDP project for Local Governance – DDLG

9.4 Other Projects in 2008 and 2009

9.4.1 RPRP

There are no RPRP projects being implemented in this district or province at this time. The RPRP is only being implemented in Svay Rieng and Prey Veng

9.4.1.1 RPRP Projects from 2006 to 2008

No RPRP projects in this district at this time

9.4.1.2 RPRP Projects in 2009

No RPRP projects in this district at this time

9.4.2 Seth Korma

9.4.2.1 Seth Koma 2007

There are no Seth Korma projects being implemented in this district or province at this time.

Source: UNICEF

9.4.2.2 Seth Koma 2008

There are no Seth Korma projects being implemented in this district or province at this time.

Source: UNICEF

9.4.2.3 Seth Koma 2009

There are no Seth Korma projects being implemented in this district or province at this time.

Source: UNICEF

SECTION D: SERVICES AND ORGANIZATIONS

10 Infrastructure

10.1 Length of and Expenditure on Roads in 2008, by District

Roads	KKG	Bothumsakor	kirisakor	Koh Kong	Khemarak phumen	Mondul sema	Sre Ambel	Thmabang
Length of paved road in the district	141	25	0	46	27	2	41	0
Length of unpaved roads in the district	803	91	3	38	140	101	368	62
Amount spent on construction of roads in 2008 (\$)	1,840,380	153,969	271,986	193,930	288,662	162,610	407,894	361,329
Amount spent on repair and rehabilitation of roads in 2008 (\$)	12,857						12,857	

Note 1: Please note that these data are not necessarily complete or correct. The data are derived from government agencies at provincial and district level which used different recording systems, did not always have complete data or were, sometimes, less than willing to share their data.

Note 2: Please be aware that these data are incomplete due to the fact that the amounts for the construction, repair and rehabilitation recorded reflect only funds provided by the government, not the contributions by any other parties.

10.2 Scale of and Expenditure on Irrigation in 2008, by District

Irrigation	KKG	Bothumsakor	kirisakor	Koh Kong	Khemarak phumen	Mondul sema	Sre Ambel	Thmabang
Number of irrigation schemes operating in 2008	5	2	0	0	0	0	3	0
Total nr of hectares under irrigation in dry season 2008	-	0	0	0	0	0	0	0
Total funds spent in 2008 on construction of irrigation systems (\$)	31,000	0	0	0	0	0	31,000	0
Total funds spent in 2008 on rehabilitation/repair of irrigation systems (\$)	77,488	77,488	0	0	0	0	0	0
Total funds spent in 2008 on operation and maintenance (\$)	3,221	3,221	0	0	0	0	0	0

Note 1: Please note that these data are not necessarily complete or correct. The data are derived from government agencies at provincial and district level which used different recording systems, did not always have complete data or were, sometimes, less than willing to share their data.

Note 2: Please be aware that the data above are incomplete as these only reflect funds provided by the government, not the contributions by farmers or other parties.

10.3 Power Supply in 2008, by District

Electricity	KKG	Bothumsakor	kirisakor	Koh Kong	Khemarak phumen	Mondul sema	Sre Ambel	Thmabang
Total number of electricity connections to households	19	6	2	1	1	2	5	2
Total number of electricity connections to agencies, companies, organizations	3	0	0	0	1	0	2	0
Total volume in KWh of electricity consumed last in 2008	108,650	39,000	22,275	1,875	n/a	n/a	45,500	n/a
Total amount collected from users for consumed electricity (\$)	68,202	24,375	7,593	2,109	n/a	n/a	34,125	n/a
Per capita electricity consumption in 2008 in Kwh	4	2	3	0	n/a	n/a	10	n/a

Note 1: Please note that these data are not necessarily complete or correct. The data are derived from government agencies at provincial and district level which used different recording systems, did not always have complete data or were, sometimes, less than willing to share their data.

Note 2: These data only record electricity provided by electricity companies and does not include homes powered by generators or batteries (for this information see Section B: General Profile, Part 1: General Information; table 1.3.1 and chart 1.3.4).

Note 3: In most provinces electricity is only provided through town-based networks

Note 4: Per capita consumption is calculated by dividing the total volume of electricity produced in 2008 by the number of people living in each district as per the 2008 census (for the provincial data it is calculated against the number of people living in the province)

11 Health Facilities

Please note that the Operational District (health) boundaries are different to the administrative district boundaries. Therefore the data provided here shows the facilities, staff, NGOs etc in each Operational District within the province NOT the administrative district.

Acronyms

Com Cov	Commune Covered	MW2	Secondary Midwives
CPA	Complementary Package of Activities	NU1	Primary Nurse
Dr	Doctor	NU2	Secondary Nurse
FDH	Former District Hospital	OD	Operational District
HC	Health Center	Others	Other Staff
HC (NB)	Health Center no building	PHD	Provincial Health Department
HP	Health Post	Pop 04-05	Population Covered 2004 or 2005
MA	Medical Assistant	RH	Referral Hospital
MPA	Minimum Package of Activities	Vil Cov	Village Covered
MW1	Primary Midwives	VIL-HC	Distance from Village to Health Center

11.1 Health Facilities in the Province, by Operational District

Koh Kong	OD	RH	HC	HP
Smach Meanchey	1	1	6	3
Sre Ambel	1	1	7	
Total	2	2	13	3

11.2 Health Facilities and Staff in the province, by Operational District

This table shows health facilities, staff and coverage of health facilities in each operational district.

No	Facility Name	Type	Class	Dr	Ma	Nu2	Nu1	Mw2	Mw1	Others	Com Cov	Vil Cov	Pop. 04-05
Smach Meanchey													
1	Bak Khlang	HC	MPA	0	1	7	1	3	0	0	3	11	8,239
2	Kaoh Kapi	HP	Nil	0	0	0	0	0	0	1	1	3	3,261
3	Kiri Sakor	FDH	MPA	0	1	4	1	1	0	0	3	9	5,465
4	Neang Kok	HC(NB)	None	0	0	0	0	0	0	0	1	2	5,582
5	Ruessei Chrum	HP	Nil	0	0	0	0	0	0	4	4	13	1,778
6	Smach Mean Chey	HC(NB)	None	0	0	0	2	3	2	0	2	8	20,610
7	Steung Veng	HC(NB)	None	0	0	0	0	0	0	0	2	3	9,449
8	Ta Tai Kraom	HP	Nil	0	0	0	0	0	0	1	1	2	810
Total:				0	2	11	4	7	2	6	17	51	55,194
Sre Ambel													
1	Trapeang Rung	FDH	MPA	0	1	2	0	0	0	0	4	11	7,290
2	Andaung Teuk	FDH	MPA	0	0	1	1	1	0	0	2	11	7,044
3	Boeng Preav	HC	MPA	0	0	1	3	0	0	0	2	11	8,751
4	Chiphat	FDH	MPA	0	0	1	1	0	1	0	1	4	2,819
5	Kaev Phos	HC	None MPA	0	0	1	0	0	0	0	1	4	2,330
6	Srae Ambel	HC	MPA	0	0	2	2	1	0	0	4	22	23,009
7	Takavit	HC	MPA	0	0	1	1	0	0	3	4	13	13,307
Total:				0	1	9	8	2	1	3	18	76	64,550
Total All				0	3	20	12	9	3	9	35	127	119,744

Source: MEDiCAM – Infrastructure - (http://www.medicam-cambodia.org/hsi/health_system/srch/index.asp?cboLn=6&cmdSearch=Search&cboCHName=&cboType=)

11.3 Deliveries in 2007 in the Province, by Operational District

OD	Deliveries	Deliveries at home		Deliveries	Total deliveries	Total deliveries
	at HC	By Health Staff	By TBAs	at RH	by Health Staff	by health staff and TBAs
Smach Mean Chey	234	171	385	366	771	1156
Srae Ambel	336	216	476	115	667	1143
<i>Sub-total</i>	<i>570</i>	<i>387</i>	<i>861</i>	<i>481</i>	<i>1438</i>	<i>2299</i>

Source: MoH, Annual Statistics 2007

12 Education³

12.1 Schools, Classes, Students, Staff, for all levels, for 2007/2008 by District

District	Number of Schools	Disadv. Schools	Number of Classes	Classes in Pagoda	Enrollment		Repeaters		Teaching Staff		Non-Teaching Staff		Total Staff	
					Total	Girl	Total	Girl	Total	Female	Total	Female	Total	Female
Botum Sakor	16	0	105	2	4,527	2,129	457	211	91	17	9	2	100	19
Kampong Seila	18	0	125	0	4,785	2,208	371	159	97	17	2	1	99	18
Kiri Sakor	8	0	55	0	1,911	925	208	108	34	4	2	2	36	6
Koh Kong	10	0	54	0	1,581	740	132	62	42	7	2	0	44	7
Mondul Seima	14	0	89	0	3,121	1,459	419	174	70	30	10	1	80	31
Smach Meanchey	11	1	151	0	6,513	2,936	373	176	190	66	24	8	214	74
Sre Ambel	42	1	276	4	10,300	4,754	1,131	480	220	54	18	7	238	61
Thmar Baing	11	0	49	0	1,602	691	206	95	24	1	1	0	25	1
Whole Province	130	2	904	6	34,340	15,842	3,297	1,465	768	196	68	21	836	217
- Urban Area	11	1	151	0	6,513	2,936	373	176	190	66	24	8	214	74
- Rural Area	76	1	506	6	19,612	9,091	1,959	850	408	88	29	10	437	98
- Remote Area	43	0	247	0	8,215	3,815	965	439	170	42	15	3	185	45

12.2 Characteristics of Schools and School Principals for 2007/2008 by Commune

Commune	Number of Schools				2 - Shift	Floating	Schools	Attached	Schools Without		Characteristics of School Principals (Incharge)			
	Pre-Sch	Primary	College	Lycee	Schools	Schools	in Pagoda	Pre-Sch	Water Sup.	Latrine	Avg. Age	Avg. Service	U.Sec+ Ed.	Female
Ta Tey Leu	1	1	1	0	2	0	0	1	2	3	26.1	4.0	0	0
Pralay	0	1	0	0	1	0	0	0	1	1	27.2	3.0	0	0
Chumnoab	0	1	0	0	1	0	0	0	1	1	35.7	4.0	0	0
Ruessei Chrum	0	1	1	0	2	0	0	0	1	2	25.8	1.5	1	0
Chi Phat	1	1	1	0	1	0	0	1	2	1	41.6	19.3	1	0
Thma Doun Pov	0	1	0	0	1	0	0	0	0	1	27.5	3.0	0	0

³ All the data for section 12 comes from the Ministry of Education, Youth and Sport (MoEYS)

12.3 Enrolment by Level of Education, 2006/2007 by Commune

Commune	School	Pre school		Primary School		Lower Secondary School		Upper Secondary School		Enrolment	
		Total	Female	Total	Female	Total	Female	Total	Female	Total	Female
Ta Tey Leu	2	22	12	219	98	0	0	0	0	241	110
Pralay	1	0	0	182	89	0	0	0	0	182	89
Chumnoab	1	0	0	171	76	0	0	0	0	171	76
Ruessei Chrum	1	0	0	219	94	0	0	0	0	219	94
Chi Phat	3	38	17	405	195	62	28	0	0	505	240
Thma Doun Pov	1	0	0	156	72	0	0	0	0	156	72

12.4 Enrolment by Level of Education, 2007/2008 by Commune

Commune	School	Pre school		Primary School		Lower Secondary School		Upper Secondary School		Enrolment	
		Total	Female	Total	Female	Total	Female	Total	Female	Total	Female
Ta Tey Leu	3	34	13	192	86	23	11	0		249	110
Pralay	1	0	0	230	93	0	0	0		230	93
Chumnoab	1	0	0	164	64	0	0	0		164	64
Ruessei Chrum	2	0	0	232	90	22	9	0		254	99
Chi Phat	3	38	17	415	201	68	28	0		521	246
Thma Doun Pov	1	0	0	184	79	0	0	0		184	79

12.5 Aspects of Enrolment for 2007/2008 by Commune

Commune	% Repeaters (Total)			% Over-age Enrollment (Total)			% Repeaters (Girl)			% Over-age Enrollment (Girl)		
	Primary	L.Sec.	U.Sec.	Primary	L.Sec.	U.Sec.	Primary	L.Sec.	U.Sec.	Primary	L.Sec.	U.Sec.
Ta Tey Leu	17.2	0.0	0.0	22.9	4.3	0.0	18.6	0.0	0.0	23.3	9.1	0.0
Pralay	17.0	0.0	0.0	13.0	0.0	0.0	23.7	0.0	0.0	9.7	0.0	0.0
Chumnoab	17.7	0.0	0.0	15.9	0.0	0.0	25.0	0.0	0.0	15.6	0.0	0.0
Ruessei Chrum	16.8	0.0	0.0	16.8	9.1	0.0	15.6	0.0	0.0	8.9	22.2	0.0
Chi Phat	9.6	0.0	0.0	19.8	61.8	0.0	6.5	0.0	0.0	18.4	60.7	0.0
Thma Doun Pov	14.1	0.0	0.0	19.6	0.0	0.0	17.7	0.0	0.0	22.8	0.0	0.0

12.6 School Buildings for all schools in the District for 2007/2008, by Commune

Commune	Total Number of		Concrete/Brick Structure		Wooden Structure		Bamboo Structure		New Buildings		Buildings Without Good		
	Buildings	Rooms	Buildings	Rooms	Buildings	Rooms	Buildings	Rooms	Repaired	Constructed	Floor	Roof	Wall
Ta Tey Leu	1	5	0	2	1	3	0	0	0	0	1	0	1
Pralay	2	3	0	0	2	3	0	0	0	2	0	2	1
Chumnoab	1	2	0	0	1	2	0	0	0	0	0	0	0
Ruessei Chrum	3	9	1	6	2	3	0	0	0	1	0	1	0
Chi Phat	4	16	2	10	2	6	0	0	0	1	2	1	1
Thma Doun Pov	1	2	0	0	1	2	0	0	0	1	1	0	0

12.7 Conditions of Classrooms and Existence of Separate School Office and Library, by Commune

Commune	Number of Class rooms	Number of Classrooms			Classrooms Without Good			Number of Furniture needed				Schools with Separate	
		in Pagoda	New Repaired	New Constr.	Floor	Roof	Wall	Desks	Chairs	Black-board	Teacher Table	Office	Library
Ta Tey Leu	5	0	0	0	3	0	3	1	1	1	1	0	0
Pralay	3	0	0	3	0	2	1	0	0	0	0	0	0
Chumnoab	2	0	0	0	0	0	0	0	0	0	0	0	0
Ruessei Chrum	8	0	0	1	0	1	0	0	0	0	0	0	0
Chi Phat	10	0	0	5	6	4	4	24	24	0	0	2	1
Thma Doun Pov	2	0	0	2	2	0	0	1	1	1	1	0	0

12.8 Community Participation and Financing across all schools in the District for 2007/2008 by Commune

Commune	Parent Association				Commu. Teachers	Teaching Monks	PAP Fund (Riel)		Number of Schools Obtaining Funds from				
	Exists	Held Meet	Total	Female			per Student	per School	Sch. Income	Community	Gvt. For building	Abroad	IOs/NGOs
Ta Tey Leu	2	1	5	1	0	0	-	-	0	0	0	0	0
Pralay	1	1	7	0	0	0	-	-	0	0	0	0	0
Chumnoab	1	1	7	0	0	0	-	-	0	0	0	0	0
Ruessei Chrum	1	1	7	0	0	0	-	-	0	0	0	0	0
Chi Phat	2	1	5	1	0	0	-	-	0	0	0	0	0
Thma Doun Pov	1	1	7	0	0	0	-	-	0	0	0	0	0

12.9 Percentage Student Flow Rates and Graduation by level 2006/2007, by Commune

Commune	Primary Level (Grades 1-6)			Lower Secondary Level (Grades 7-9)			Upper Secondary Level (Grades 10-12)			Successful Candidates		
	Promotion	Repetition	Dropout	Promotion	Repetition	Dropout	Promotion	Repetition	Dropout	Grade 6	Grade 9	Grade 12
Ta Tey Leu	68.5	15.1	16.4	0.0	0.0	0.0	0.0	0.0	0.0	23	0	0
Pralay	70.9	21.4	7.7	0.0	0.0	0.0	0.0	0.0	0.0	0	0	0
Chumnoab	64.3	17.0	18.7	0.0	0.0	0.0	0.0	0.0	0.0	0	0	0
Ruessei Chrum	66.2	17.8	16.0	0.0	0.0	0.0	0.0	0.0	0.0	20	0	0
Chi Phat	73.3	9.9	16.8	59.7	0.0	40.3	0.0	0.0	0.0	33	0	0
Thma Doun Pov	77.6	16.7	5.8	0.0	0.0	0.0	0.0	0.0	0.0	0	0	0

13 Staff and Resources at the District

This chapter presents data from the District Information System, collected around the middle of 2009 unless otherwise specified.

13.1 District Councilors elected in 2009

Name	Sex	Year of Birth	Function	Phone
ពេជ្រ ឆន្ទៈ	M	1946	Chairperson of The Council	089-368 617
អ៊ុំ ព្រីង	M	1949	Councillor	017-287 100
ឈៀក គឹមសេង	M	1960	Councillor	017-939 895
ថាង ស៊ីថា	M	1953	Councillor	
អុល បញ្ញា	F	1959	Councillor	011-521 571
ឆម សិប្បន្ទ	M	1968	Councillor	099-376 416
យុង សន	M	1944	Councillor	

13.2 Committees of the Council

Please note at the time of producing the district data books the composition of the committees was not known for all district councils and therefore data were not available for 13.2.1, 13.2.2, 13.2.3.

13.2.1 Technical Facilitation Committee

13.2.2 Women's and Children's Affairs Committee

13.2.3 Procurement Committee

13.3 Board of Governors

Name	Sex	DoB	Function	Salary Level	Body	Phone
ទូ សារ៉ុន	M	0000	District Governor			099-224 293
កែវ នីបូរ៉ា	M	0000	District Deputy Governor	ខ.១.៥	Medium Civil Servant	099-414 243
សៀវ សាបាន	M	0000	District Deputy Governor		Royal Military	085-513 424

13.4 Offices under Sala Krong, Sala Srok and Sala Khan

Office Name	Chief		Deputy Chief		No. of Staff				Office Area (m2)	No of vehicle (public or program)	
					State		Contract			vehicle	moto
	M	F	M	F	M	F	M	F			
	District/ Khan Cabinet	1	0	0	0	0	0	1		0	Borrow
Adminnistration Office	0	0	0	0	4	0	0	0	Borrow	0	1
Economy Office	1	0	1	0	0	0	0	0	Borrow	0	1
Social Affair Office	1	0	0	0	0	0	0	0	Borrow	0	0

13.5 Municipality/District/Khan line offices

Office Name	Chief		Deputy Chief		No. of Staff				Office Area (m2)	No of vehicle (public or program)	
					State		Contract				
	M	F	M	F	M	F	M	F		vehicle	moto
District/ Khan Police Headquarter	1	0	4	0	38	0	0	0	48	0	10
District/ Khan Military Police Headquarter	1	0	2	0	1	0	0	0	Borrow	0	0
Planning Office	1	0	1	0	0	0	0	0	Borrow	0	1
Environment Office	1	0	0	0	0	0	2	0	Borrow	0	0
Education Office	1	0	1	0	32	4	12	0	0	0	1
District/ Khan Operational Office	1	0	0	0	0	4	3	3	Borrow	0	4
Agriculture Office	1	0	1	0	1	0	0	0	Borrow	0	1
Lan Management Office	1	0	0	0	2	0	1	0	48	0	0

13.6 Properties and Equipment of District Administration

13.6.1 Buildings

Description	Unit	Number	Remark
Office building type			
- Concrete	building	0	
- Wood	building	0	
- Mixed	building	2	
Total floor space	m2		
- Concrete	m2	0	
- Wood	m2	0	
- Mixed	m2	268	
Building condition			
- Concrete	%	0	
- Wood	%	0	
- Mixed	%	50	
Office reserved land area	m2	3,300	
Total office land area	m2	14,570	

13.6.2 Means of Transport available at the District Administration

Description	Unit	Number	Remark
Vehicle (type, size and condition)	Vehicle	0	
Motorcycle (type, size and condition)	Motor	4	

13.6.3 Equipment in District Offices

Description	Unit	Number	Remark
Generator	per set	0	
Photocopy machine at the office	per set	0	
Private photocopy machine at the district town	place	0	
Telephone network (mobile line service)	network	3	011,016,012
Telephone network (land line service)	network	0	
Fax (include Fax number)	per set	0	
Computer	per set	0	
Printer	per set	0	
Scanner	Per set	0	
Number of computers those can access Internet and email services in the municipality/ district/khan office (including the technical line offices (please provide the email address)	set	0	
Typewriters (including the technical line offices)	per set	2	
Staff of Municipality/district/khan office can use computer	person	2	

13.6.4 Equipment and facilities at the District Town

Description	Unit	Number	Remark
Availability of electricity at noon	Nr Hours	0	
Private internet and email services in the municipality/ district/khan town.	place	0	

13.7 Registered Revenue of the District Administration in 2008⁴

13.8 Services in the District

13.8.1 Public Sector Services

Type of Infrastructure/services	Unit	Number	
		Public	Private
Schools			
Pre-school	room		
Primary School	room	28	0
Secondary school	room	15	0
High School	room		
University	room		
Health			
Health post	place	2	0
Health center	place	1	0
Referral Hospital	bed		

⁴ Please note that the data in this table are at best estimates. If the table appears blank it does not mean there is no revenue, just that the data have not been recorded/entered.

13.9 Civil Society Organizations active in the District

13.9.1 NGOs, Associations, Programs and Projects

Name	Abbr.	Sector Activities	No. of Target Communes	No. of Target Villages	Office in District
Care	Care	ទប់ស្កាត់ជំងឺផ្លាស់សាយបក្សី	5	13	No
PFD	PFD	សុខភាព	6	17	No
RHAC	RHAC	មូលនិធិសមធម៌សំរាប់ជនក្រីក្រ	6	17	No
NA	CSW	អភិវឌ្ឍន៍សហគមន៍	6	17	Yes
CI	CI	អភិរក្សធនធានធម្មជាតិ និងជីវៈចម្រុះអភិវឌ្ឍន៍សហគមន៍	5	13	Yes
NA	NA	អភិរក្ស និងអភិវឌ្ឍន៍ តំបន់ទេសចរណ៍	1	4	Yes

13.9.2 Political Parties active in the Municipality, District and Khan

Name	Abbr.	Office in District
Cambodian People Party	CPP	Yes
FUNCINPEC Party	FUNCINPEC	Yes

13.10 Private Sector Organizations

13.10.1 Registered Companies in 2008, by District

On private sector at commune and/or district level	KKG	Bothumsakor	kirisakor	Koh Kong	Khemarak phumen	Mondul sema	Sre Ambel	Thmabang
Businesses and Companies								
Number of registered agricultural enterprises (except family farms)	1	0	0	0	0	0	1	
Number of registered shops, restaurants, transporters and other services	540	29	10	52	121	168	108	25
Number of manufacturing companies	29	5	0	1	13	2	8	0
Number of registered forestry enterprises	16	0	0	0	6	2	8	0
Number of registered mining companies	7	0	0	0	0	3	4	0
Number of financial institutions	7	1	0	1	1	1	3	0
Number of other commercial institutions		0	0	0	0	0	0	0
Estimated number of informal enterprises (not registered)	664	146	41	16	47	20	359	35
Employment								
Number of people employed in 2008 by companies or any other enterprises	2,300						2,300	
Investment								
Amount invested in 2008 by private sector (\$)	n/a	n/a	n/a	n/a	n/a	n/a	n/a	n/a
Markets								
Number of markets, operating at least weekly	11	3	1	1	1	3	2	

Note: These data are not comprehensive as different companies and business are registered with different departments and not all departments were able or willing to provide detailed information. The number of informal enterprises reflects a rough estimate, made at provincial level and could not be verified.

Source: Unofficially collected at Provincial Level

13.10.2 Farmers in 2008, by District

Credit	KKG	Bothumsakor	kirisakor	Koh Kong	Khemarak phumen	Mondul sema	Sre Ambel	Thmabang
Volume of credit provided to farmers in 2008 (\$)	27,489	n/a	n/a	13,384	0	14,105	n/a	n/a
Number of farmers receiving credit in 2008	52	n/a	n/a	34	0	18	n/a	n/a
Volume of credit provided to companies in 2008 (\$)	128,235	n/a	n/a	0	40,000	88,235	n/a	n/a

Note: Please note that these data are not necessarily complete or correct. The data are derived from government agencies at provincial and district level which used different recording systems, did not always have complete data or were, sometimes, less than willing to share their data.

Source: Unofficially collected at Provincial Level

SECTION E: POVERTY DATA

14 Data on Poverty

14.1 Predicted Poverty Rates for 2009, by commune

The **Predicted Family Poverty Rate** is based on a statistical model (robust multilevel mixed effect regression) at village level developed by the NCDD M&E Unit and uses CDB data for making an estimate of the predicted poverty rate (this is: *the portion of total families in the district or commune who are expected to be poor*) for the following year using current year data.

The basis for this predicted poverty rate also uses IDPoor (a project of the Ministry of Planning with technical assistance provided by GTZ) data

Commune	2004	2009
Ta Tey Leu	51%	36.10%
Pralay	40.10%	35.90%
Chumnoab	46.40%	37.70%
Ruessei Chrum	37.70%	26.90%
Chi Phat	34.90%	31.50%
Thma Doun Pov	39.40%	31.60%

14.2 Poverty data from survey

14.2.1 Identification of Poor Households Program (IDPoor)

The Ministry of Planning IDPoor Program has developed standardized Procedures for Identification of Poor Households in rural areas. These Procedures are implemented using a participatory and consultative process by sub-national government structures and community representatives.

The IDPoor Program is managed by the Ministry of Planning (MOP), in cooperation with the Ministry of Interior's Department of Local Administration (DOLA). The program is supported by the Federal Republic of Germany, with technical assistance provided by German Technical Cooperation (GTZ). In 2009, AusAID also provided funding support to the Program.

Objective

The IDPoor Program aims to implement the Procedures for Identification of Poor Households in rural areas as widely as possible, in order to provide data on the level of poverty of areas and households that can be used by a large range of institutions and organizations for targeting services and development assistance to poor areas and poor households.

Coverage: During 2007, 2008 and 2009 the IDPoor Procedures have been implemented in 18 provinces (with partial or complete coverage), covering a total of around 7000 rural villages. The MOP and a number of NGO partners who are Health Equity Fund Operators have collaborated in collecting this data from different areas.

Categorization: Identified poor households are classified under two poverty categories: Poor Level 1 (very poor), and Poor Level 2 (poor). Households are classified based on data collected using a standard questionnaire, together with consideration by villagers of these households' special circumstances.

Further information: Please go to the IDPoor Program webpage at www.mop.gov.kh/Projects/IDPoor/tabid/154/Default.aspx

This District has not yet been covered by IDPoor

